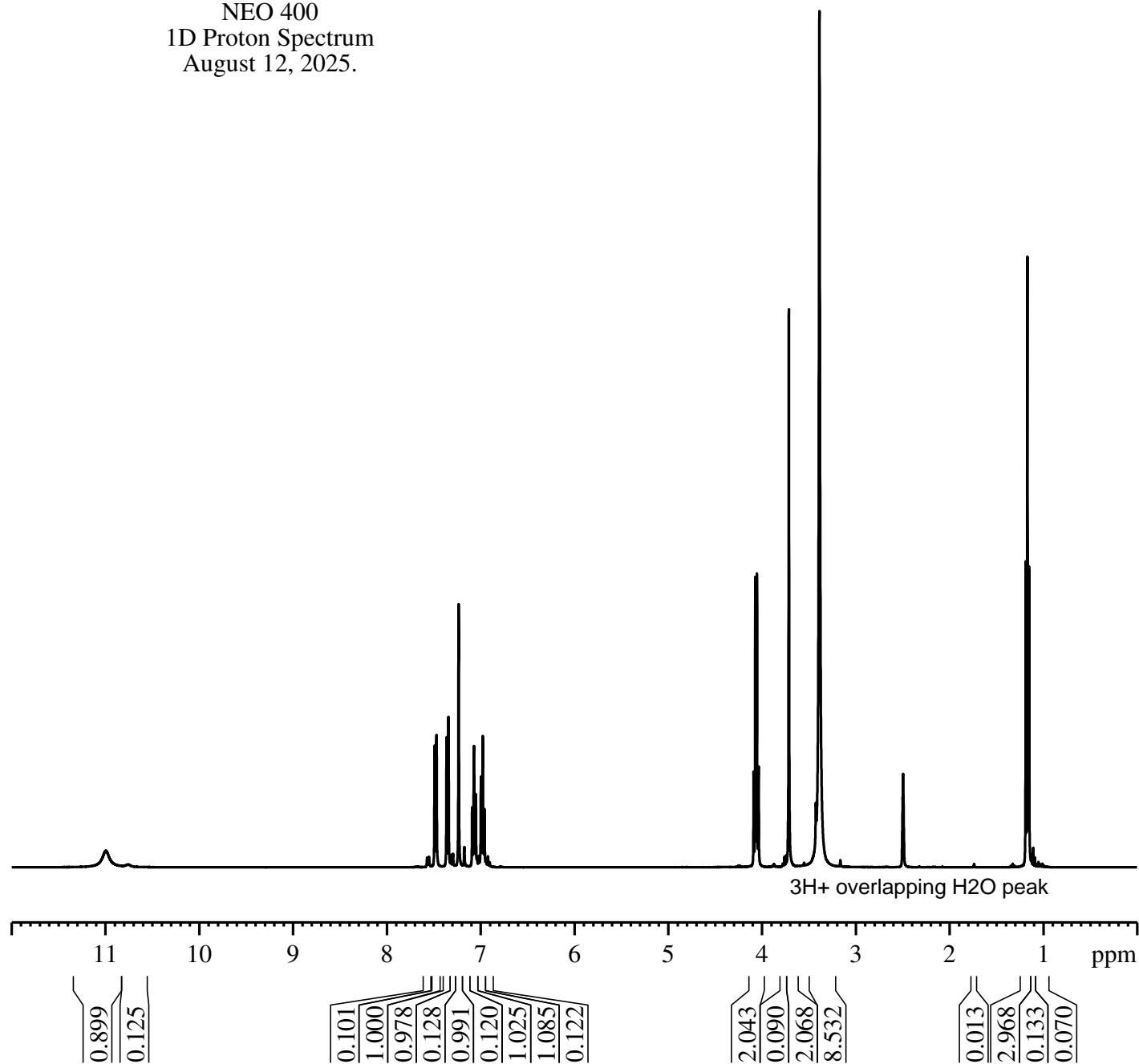


N-Ethyl-N-Methyl-tryptamide in DMSO-d6
 NEO 400
 1D Proton Spectrum
 August 12, 2025.

Current Data Parameters
 NAME Syntharise081225
 EXPNO 400
 PROCNO 1

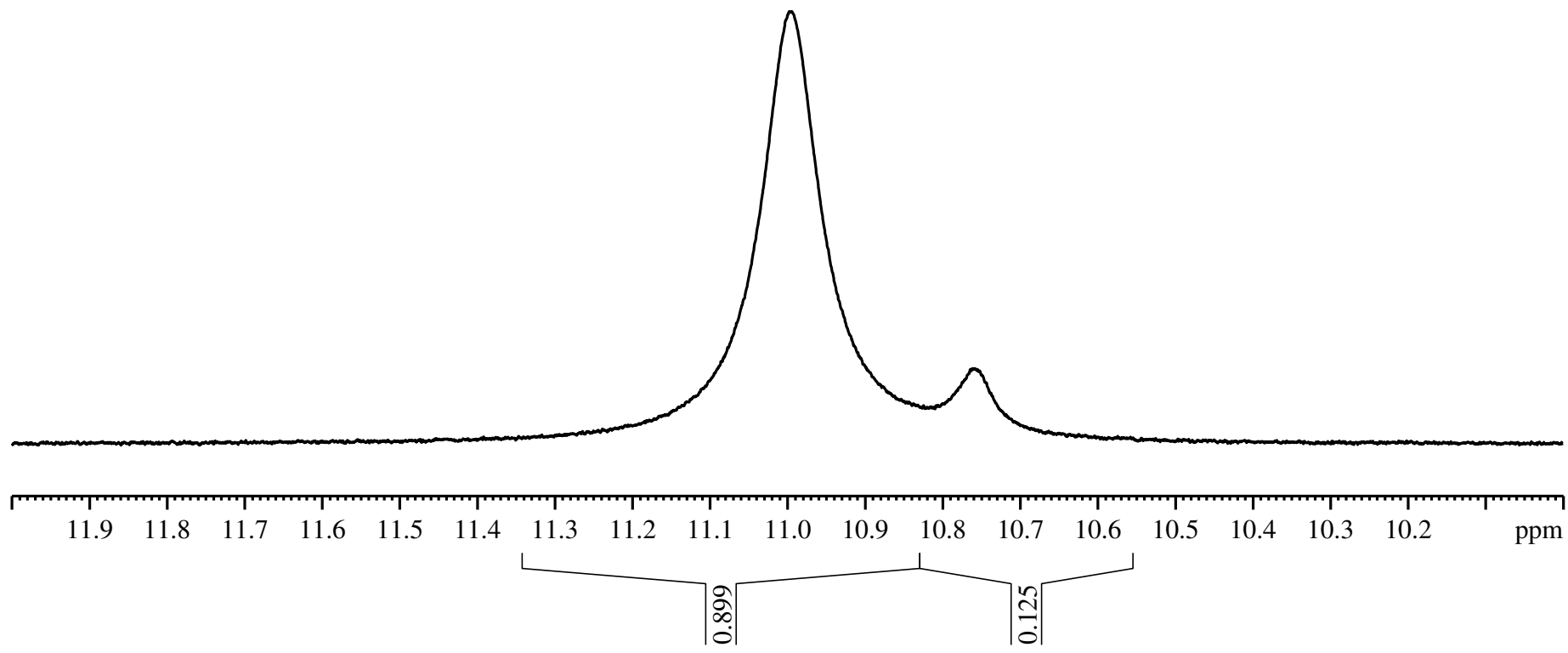
F2 - Acquisition Parameters
 Date_ 20250812
 Time 9.42 h
 INSTRUM Avance Neo 400
 PROBHD Z163739_0039 (PI HR-400-S)
 PULPROG zg30
 TD 65536
 SOLVENT DMSO
 NS 16
 DS 0
 SWH 8196.722 Hz
 FIDRES 0.250144 Hz
 AQ 3.9976959 sec
 RG 101
 DW 61.000 usec
 DE 13.54 usec
 TE 297.8 K
 D1 0.10000000 sec
 TD0 1
 SFO1 400.3424721 MHz
 NUC1 1H
 P0 3.33 usec
 P1 10.00 usec
 PLW1 14.20300007 W

F2 - Processing parameters
 SI 65536
 SF 400.3400060 MHz
 WDW EM
 SSB 0
 LB 0.30 Hz
 GB 0
 PC 1.00

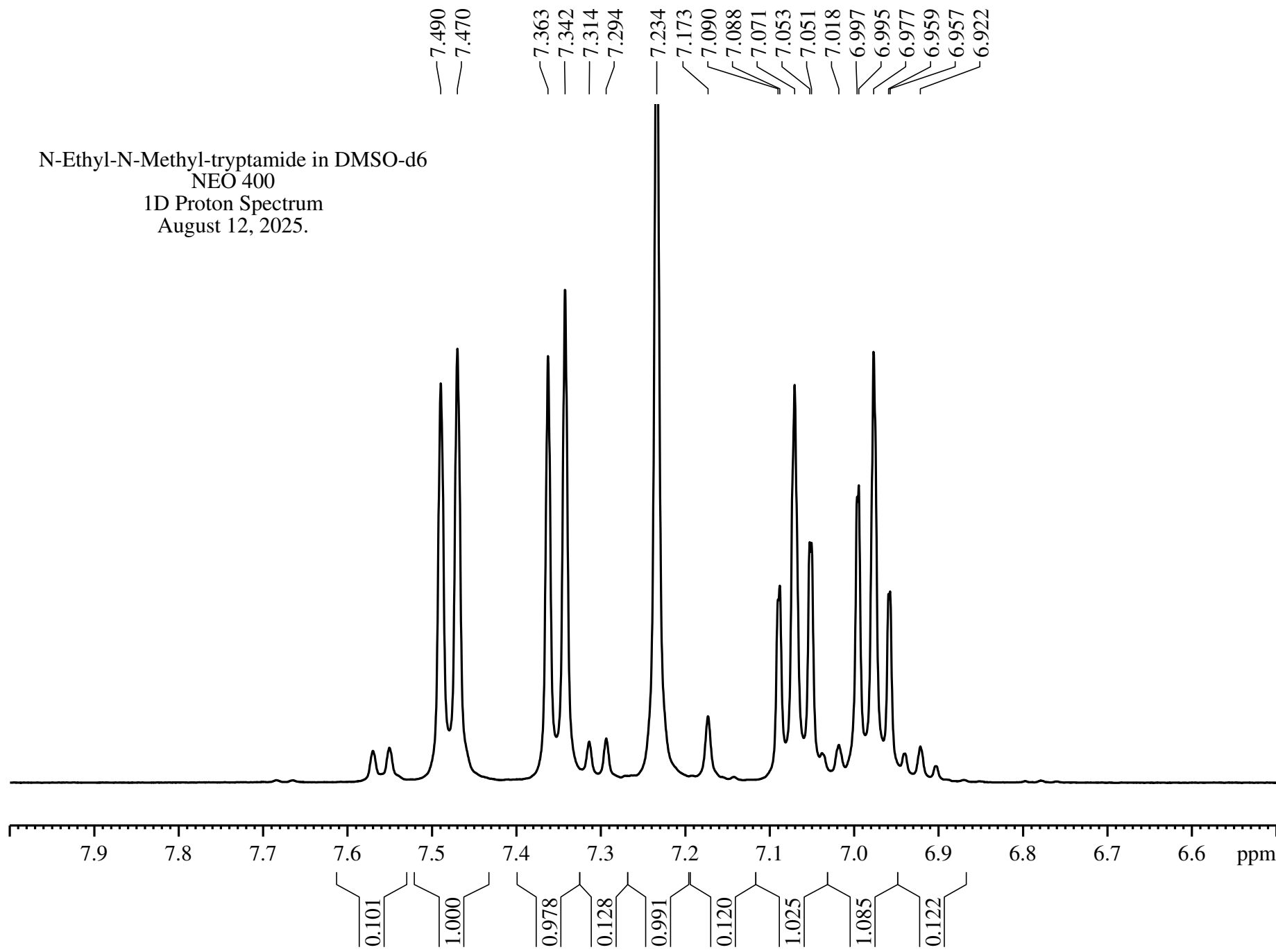


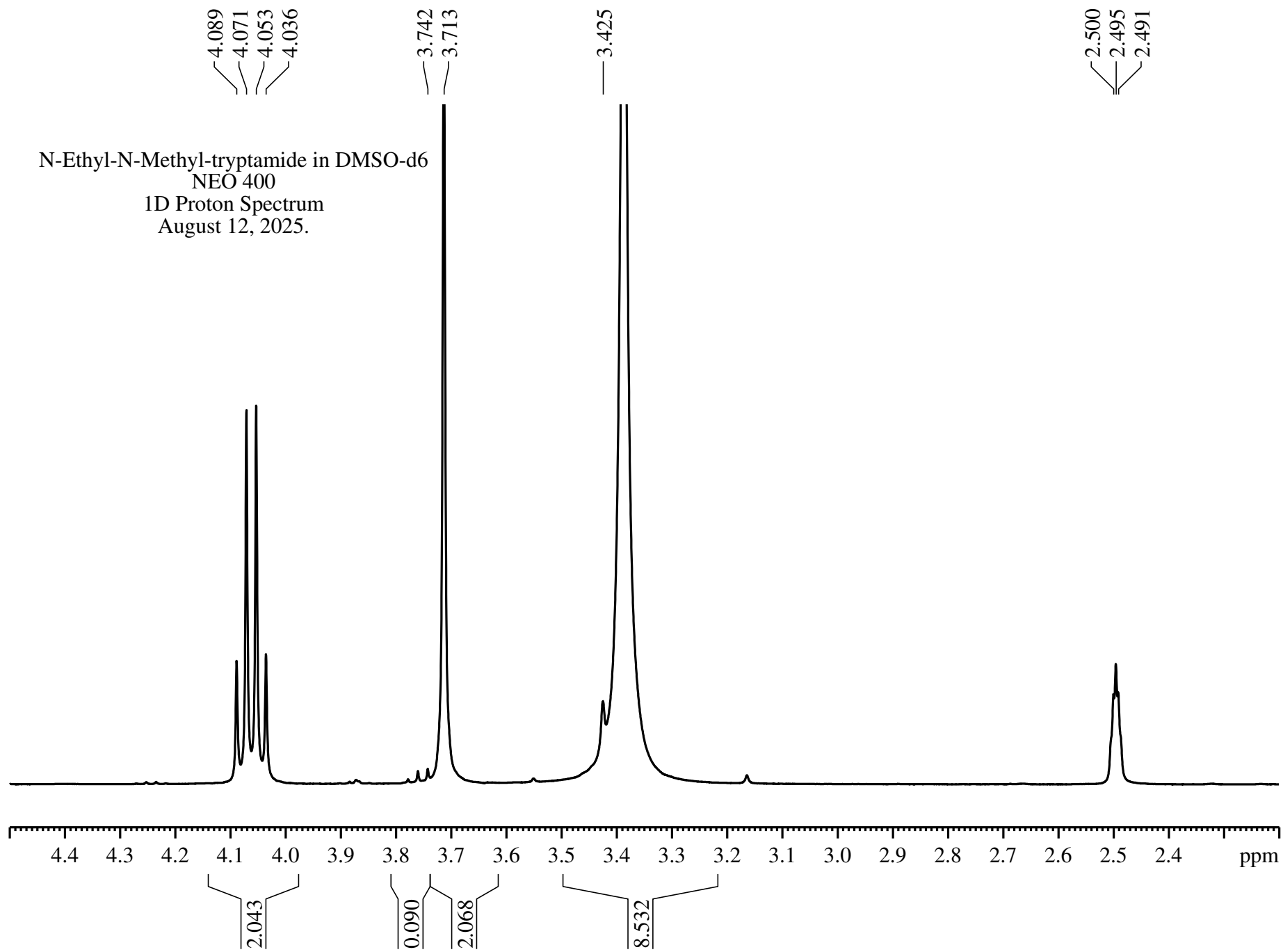
N-Ethyl-N-Methyl-tryptamide in DMSO-d6
NEO 400
1D Proton Spectrum
August 12, 2025.

— 10.997



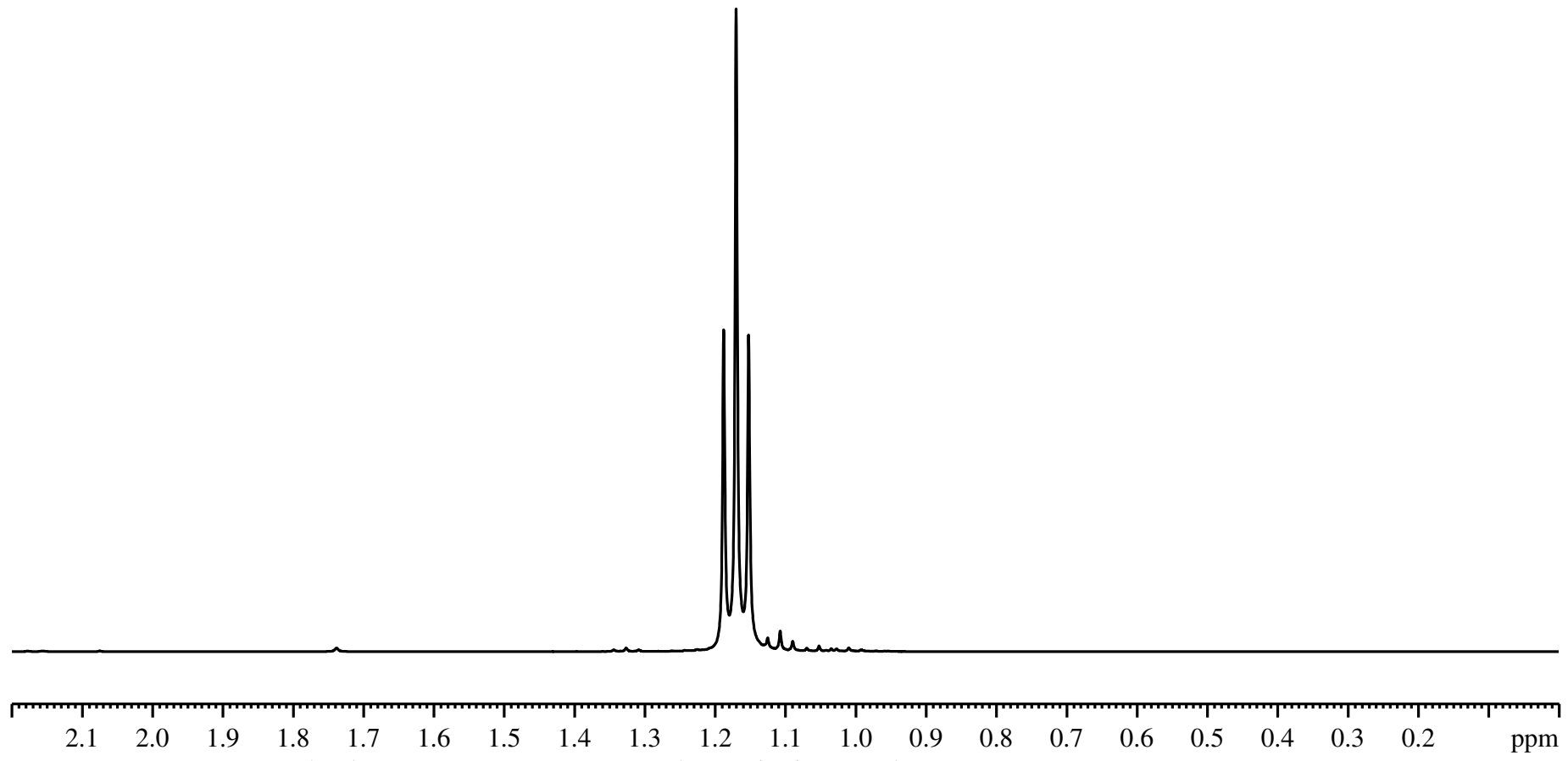
N-Ethyl-N-Methyl-tryptamide in DMSO-d6
NEO 400
1D Proton Spectrum
August 12, 2025.





N-Ethyl-N-Methyl-tryptamide in DMSO-d6
NEO 400
1D Proton Spectrum
August 12, 2025.

1.188
1.170
1.152
1.125
1.107



0.013

2.968

0.133

0.070