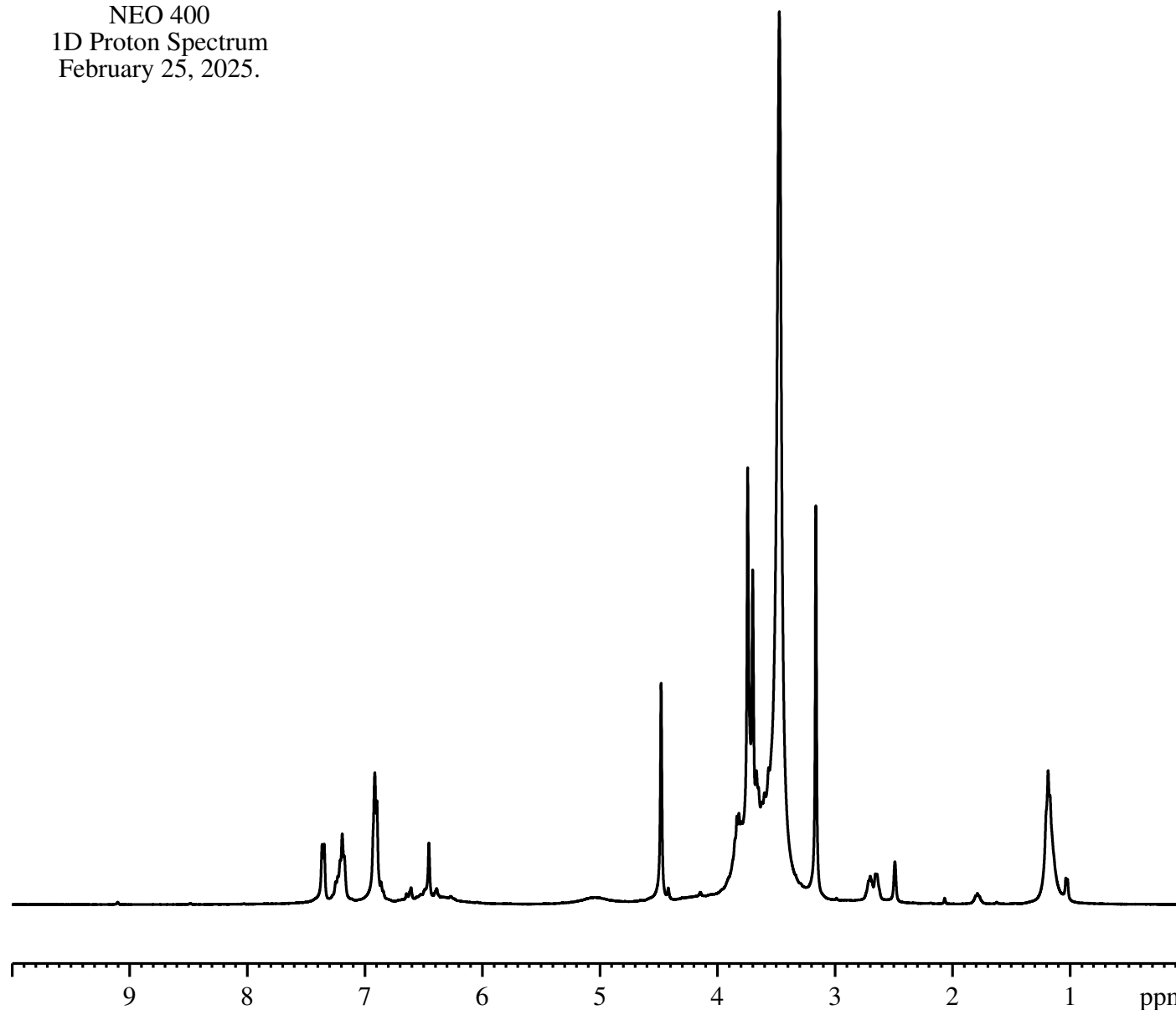


Esc NBOMe in DMSO-d6
NEO 400
1D Proton Spectrum
February 25, 2025.



Current Data Parameters
NAME Syntharise022525
EXPNO 410
PROCNO 1

F2 - Acquisition Parameters
Date_ 20250225
Time 13.12 h
INSTRUM Avance Neo 400
PROBHD Z104450_0313 (PA BBO 400)
PULPROG zg30
TD 65536
SOLVENT DMSO
NS 16
DS 0
SWH 8196.722 Hz
FIDRES 0.250144 Hz
AQ 3.9976959 sec
RG 101
DW 61.000 usec
DE 13.54 usec
TE 297.2 K
D1 0.10000000 sec
TD0 1
SFO1 400.3424721 MHz
NUC1 1H
P0 3.33 usec
P1 10.00 usec
PLW1 14.20300007 W

F2 - Processing parameters
SI 65536
SF 400.3400060 MHz
WDW EM
SSB 0
LB 0.30 Hz
GB 0
PC 1.00

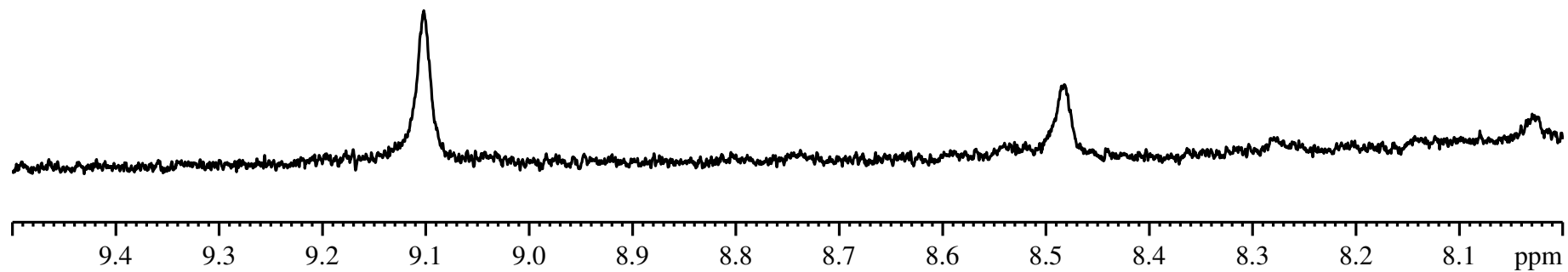
1.000
1.628
2.580
0.344
1.585

0.919
2.233

13.320
23.083
3.469
1.151
0.549

0.269
3.643
0.334

Esc NBOMe in DMSO-d6
NEO 400
1D Proton Spectrum
February 25, 2025.



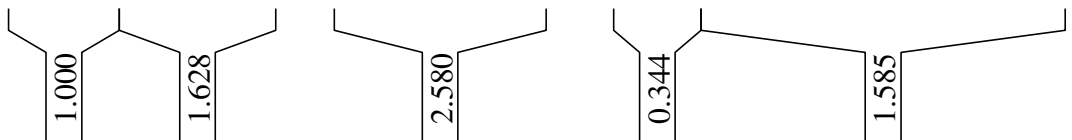
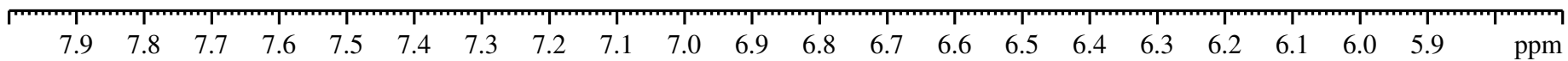
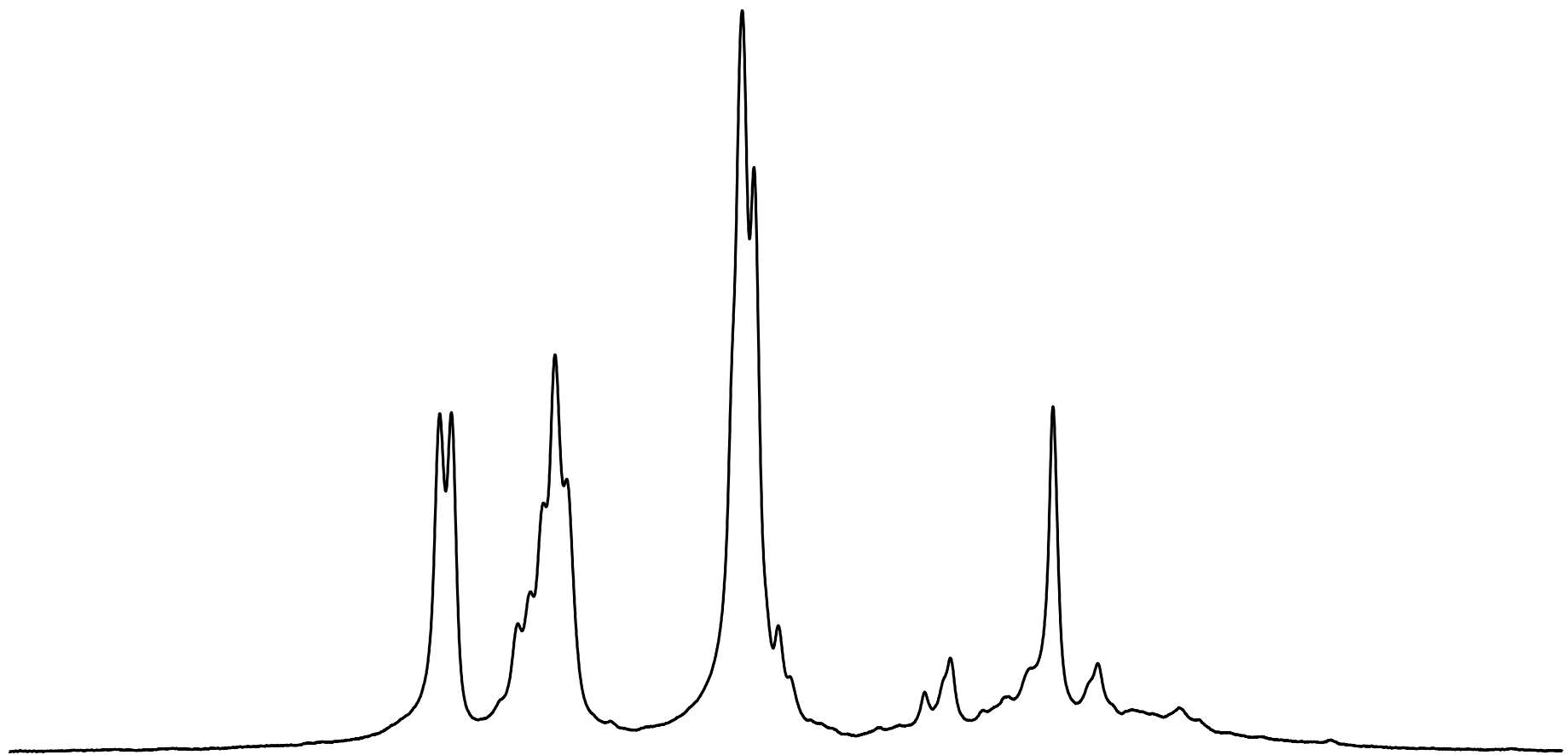
Esc NBOMe in DMSO-d6
NEO 400
1D Proton Spectrum
February 25, 2025.

7.362
7.345

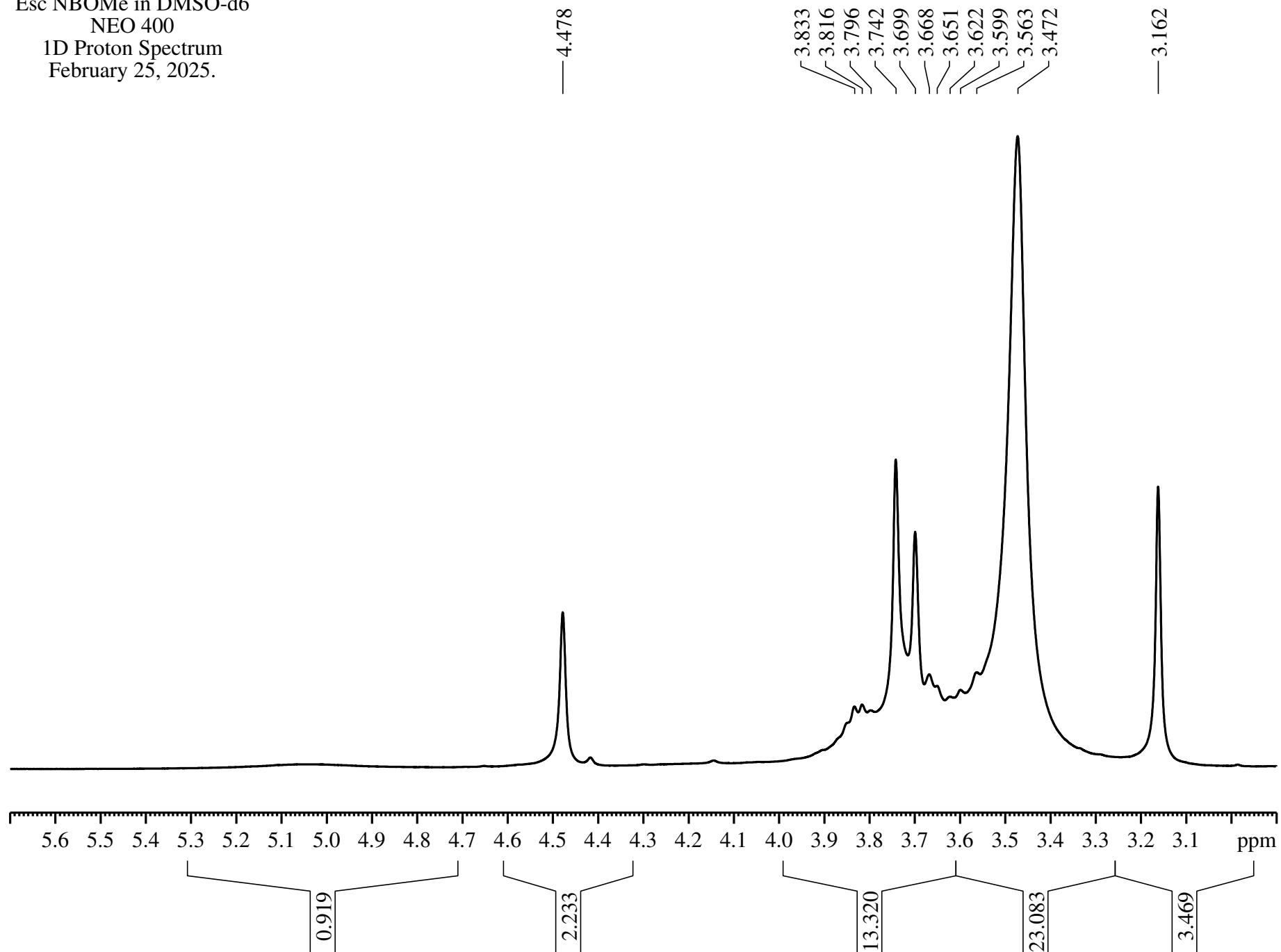
7.191
7.174

6.914
6.897

6.454



Esc NBOMe in DMSO-d6
NEO 400
1D Proton Spectrum
February 25, 2025.



Esc NBOMe in DMSO-d6
NEO 400
1D Proton Spectrum
February 25, 2025.

— 2.489

