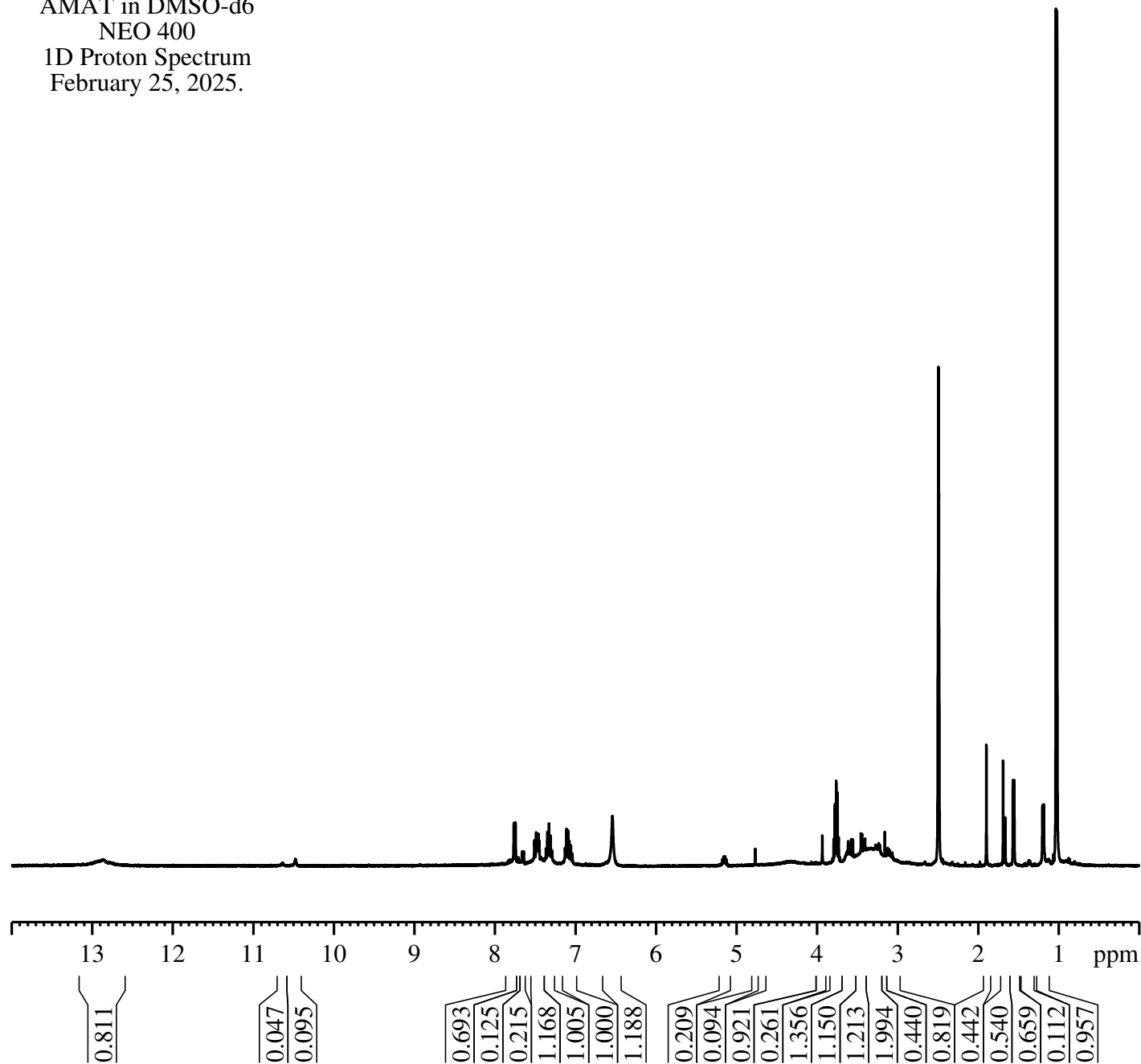


AMAT in DMSO-d6
NEO 400
1D Proton Spectrum
February 25, 2025.

Current Data Parameters
NAME Syntharise022525
EXPNO 450
PROCNO 1

F2 - Acquisition Parameters
Date_ 20250225
Time 13.22 h
INSTRUM Avance Neo 400
PROBHD Z104450_0313 (PA BBO 400)
PULPROG zg30
TD 65536
SOLVENT DMSO
NS 16
DS 0
SWH 8196.722 Hz
FIDRES 0.250144 Hz
AQ 3.9976959 sec
RG 101
DW 61.000 usec
DE 13.54 usec
TE 297.3 K
D1 0.10000000 sec
TD0 1
SFO1 400.3424721 MHz
NUC1 1H
P0 3.33 usec
P1 10.00 usec
PLW1 14.20300007 W

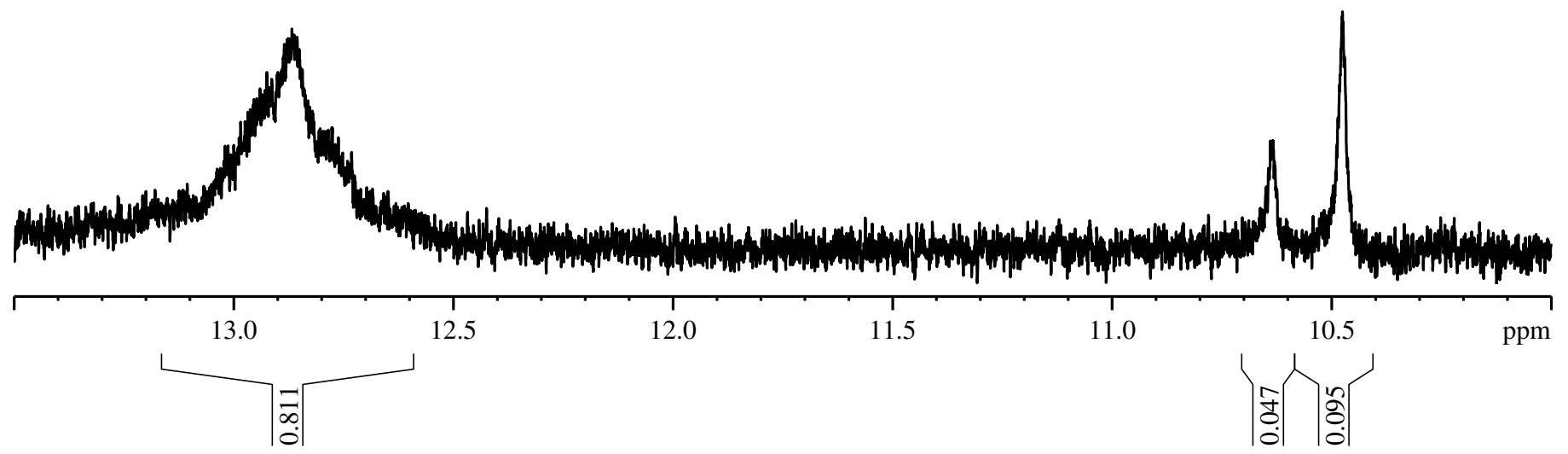
F2 - Processing parameters
SI 65536
SF 400.3400060 MHz
WDW EM
SSB 0
LB 0.30 Hz
GB 0
PC 1.00



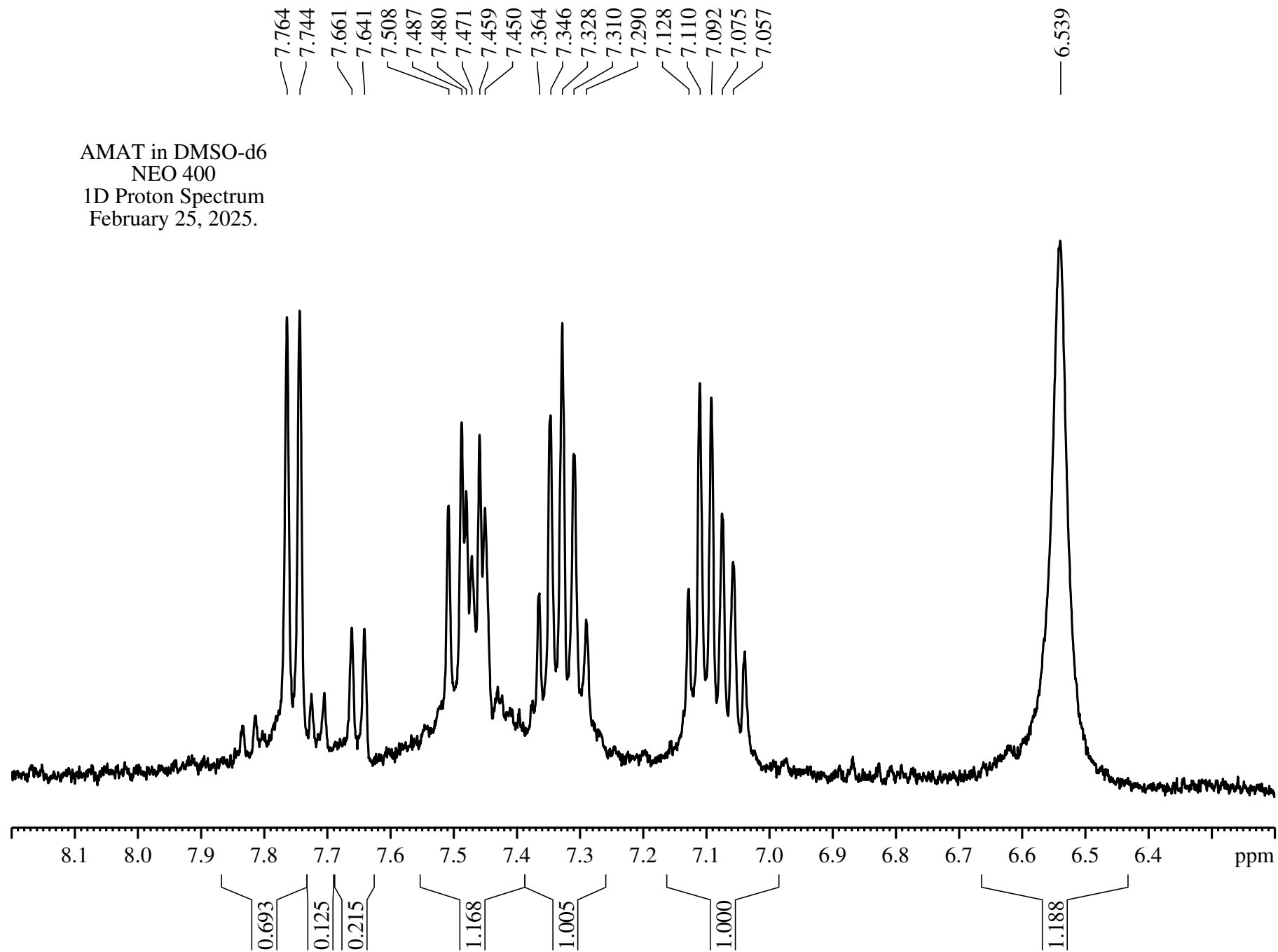
— 12.925
— 12.867

AMAT in DMSO-d6
NEO 400
1D Proton Spectrum
February 25, 2025.

— 10.475



AMAT in DMSO-d6
NEO 400
1D Proton Spectrum
February 25, 2025.

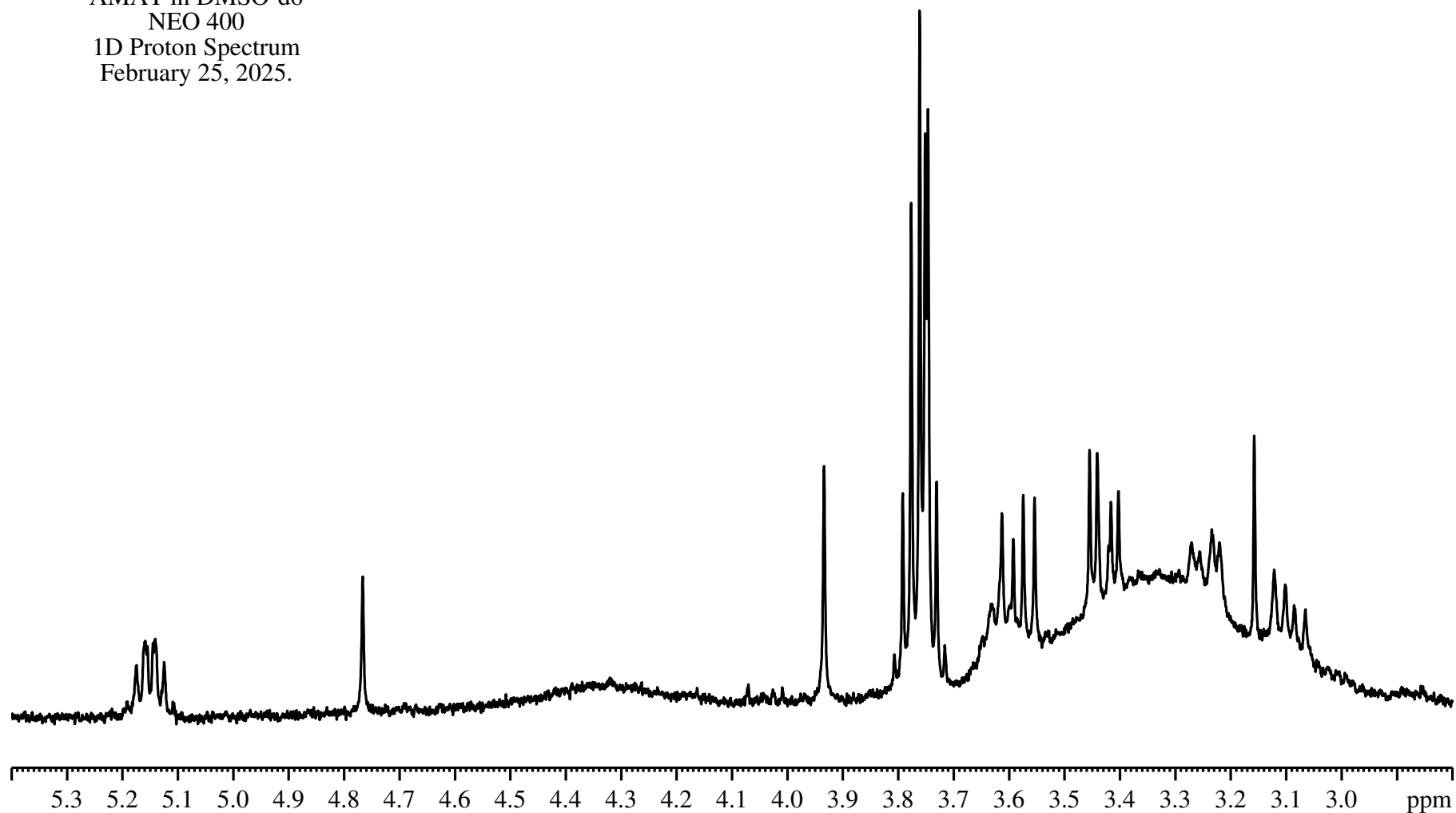


5.175
5.159
5.141
5.125

4.766

3.934
3.792
3.776
3.761
3.751
3.746
3.731
3.613
3.592
3.574
3.554
3.454
3.441
3.416
3.402
3.234
3.157

AMAT in DMSO-d6
NEO 400
1D Proton Spectrum
February 25, 2025.



0.209

0.094

0.921

0.261

1.356

1.150

1.213

1.994

0.440

0.819

ppm

TNB3Me in DMSO-d6
NEO 400
1D Proton Spectrum
February 25, 2025.

Current Data Parameters
NAME Syntharise022525
EXPNO 460
PROCNO 1

F2 - Acquisition Parameters
Date_ 20250225
Time 13.53 h
INSTRUM Avance Neo 400
PROBHD Z104450_0313 (PA BBO 400)
PULPROG zg30
TD 65536
SOLVENT DMSO
NS 16
DS 0
SWH 8196.722 Hz
FIDRES 0.250144 Hz
AQ 3.9976959 sec
RG 101
DW 61.000 usec
DE 13.54 usec
TE 297.2 K
D1 0.10000000 sec
TD0 1
SFO1 400.3424721 MHz
NUC1 1H
P0 3.33 usec
P1 10.00 usec
PLW1 14.20300007 W

F2 - Processing parameters
SI 65536
SF 400.3400060 MHz
WDW EM
SSB 0
LB 0.30 Hz
GB 0
PC 1.00

