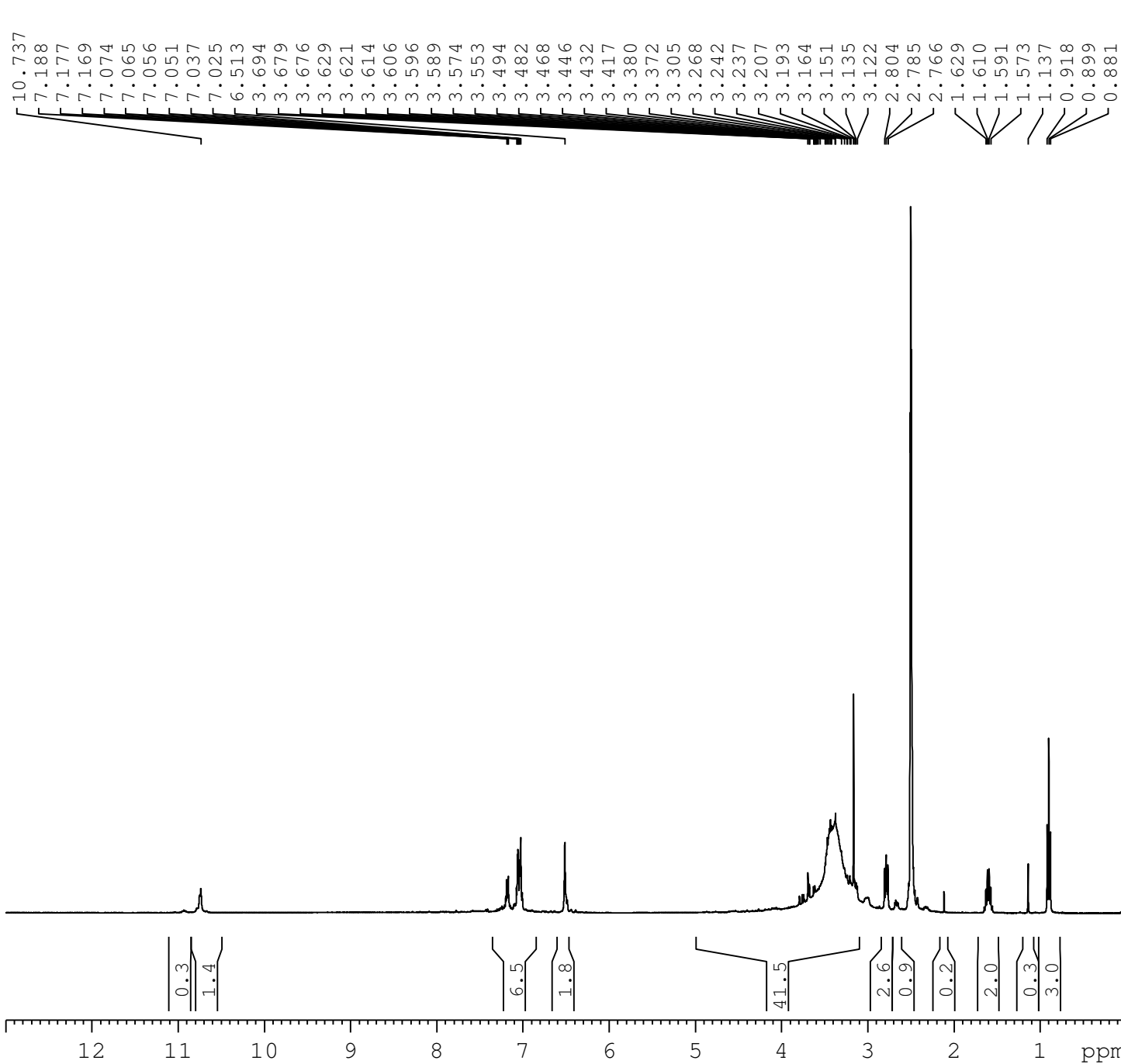


1H NMR Spectrum of LAMPA (N-methyl-N-1-propyl Lysergamide hemifumarate) (ID 69)



Current Data Parameters
 NAME syntharise_2024
 EXPNO 2024091603
 PROCNO 1

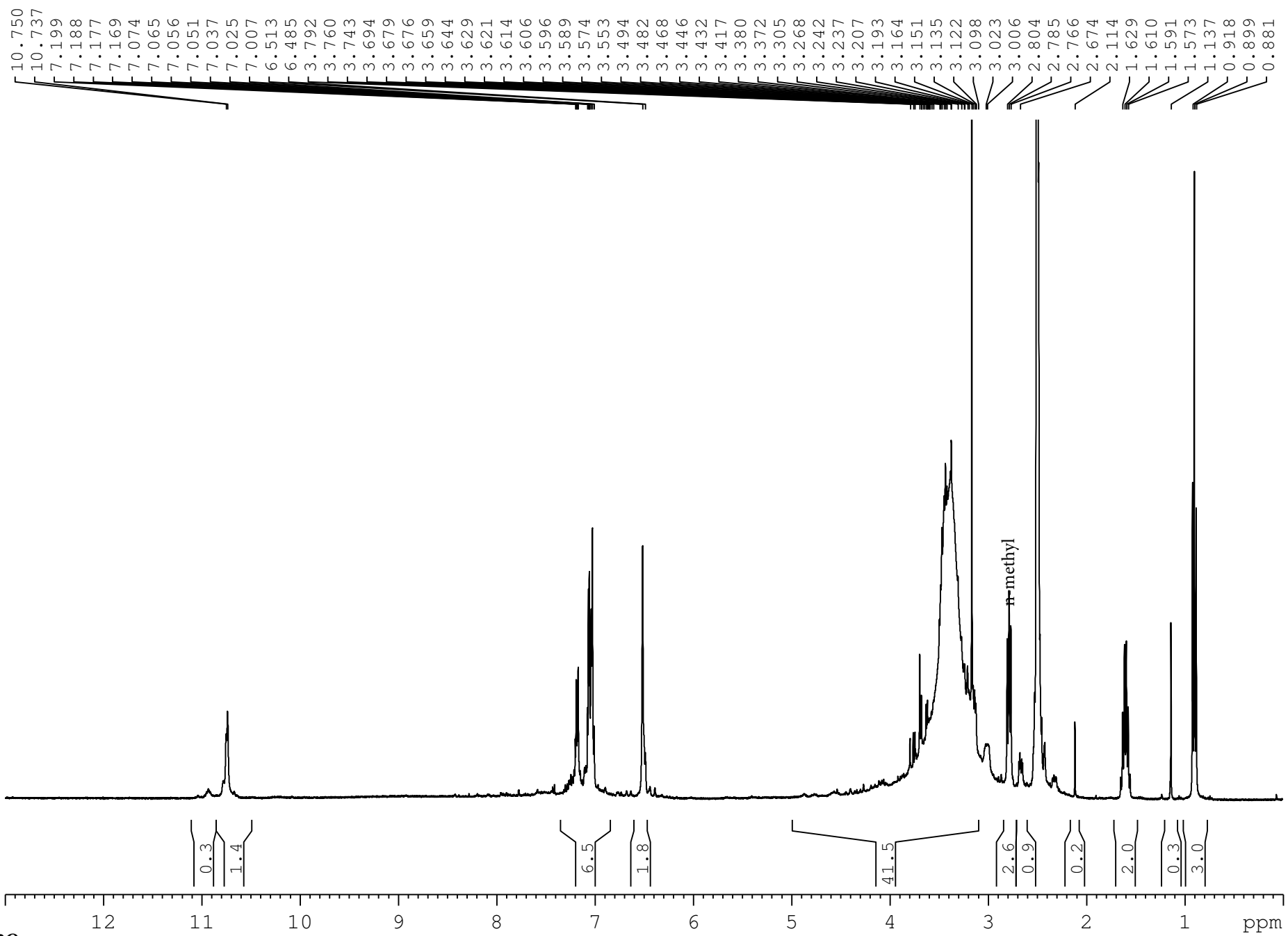
F2 - Acquisition Parameters
 Date_ 20240916
 Time 16.05 h
 INSTRUM spect
 PROBHD Z122623_0013 (
 PULPROG zg30
 TD 43588
 SOLVENT DMSO
 NS 16
 DS 2
 SWH 8012.820 Hz
 FIDRES 0.367662 Hz
 AQ 2.7198913 sec
 RG 203
 DW 62.400 usec
 DE 17.38 usec
 TE 298.2 K
 D1 5.00000000 sec
 TD0 1
 SFO1 400.1328009 MHz
 NUC1 1H
 P0 4.10 usec
 P1 12.29 usec
 PLW1 10.98999977 W

F2 - Processing parameters
 SI 65536
 SF 400.1300073 MHz
 WDW EM
 SSB 0
 LB 0.10 Hz
 GB 0
 PC 1.00

Omit H2O more
 exacting Protons =

1.1H+ 5.54+ | 1.74H+(fumarate) 4.77H+| 3.57H+| 2.35H+|0.57|0.13| 1.94H+| 0.33|2.96H+|

1H NMR Spectrum of LAMPA (N-methyl-N-1-propyl Lysergamide hemifumarate) (ID 69)



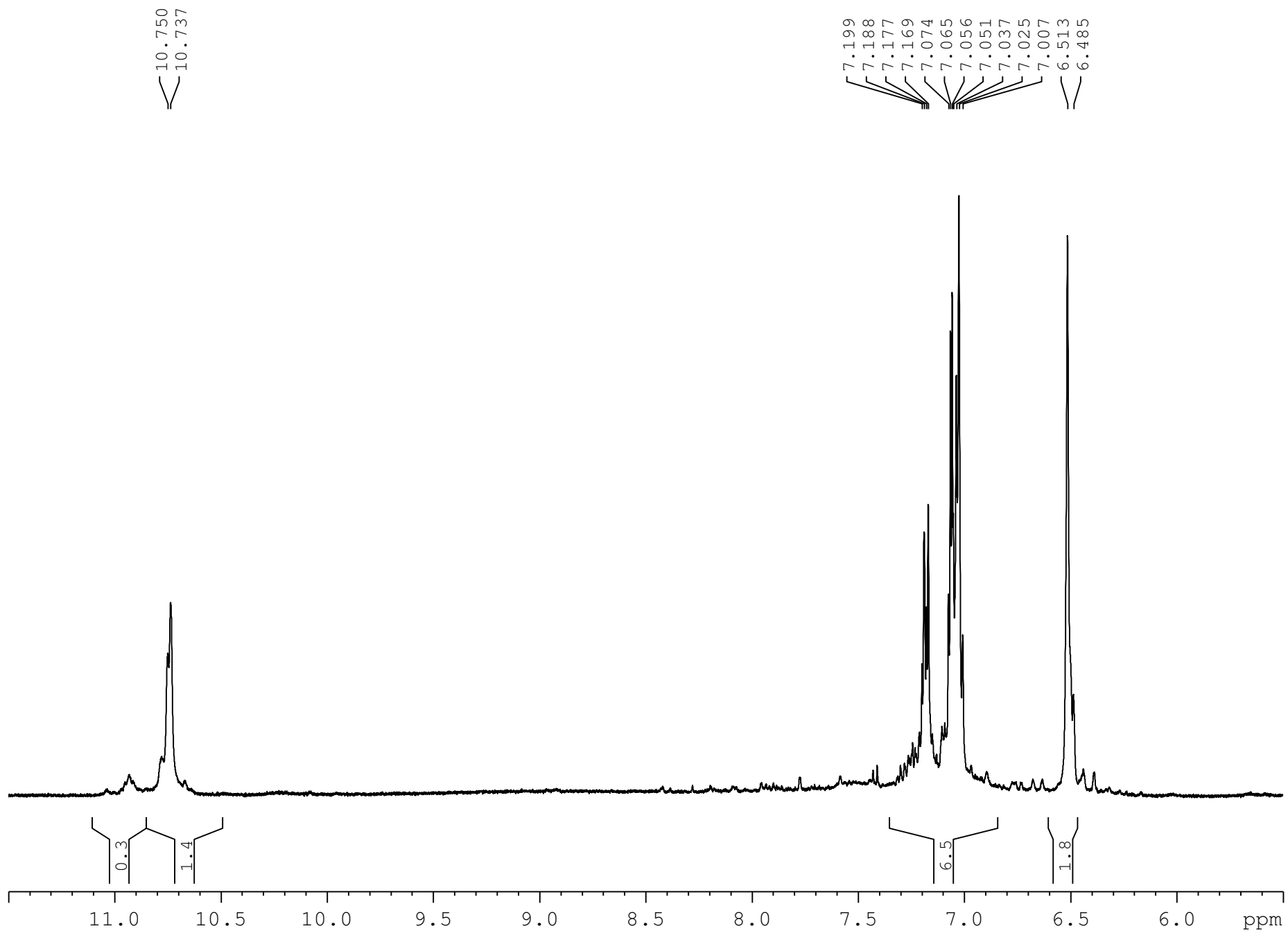
Omit H2O more
 exacting Protons =

1.1H+

5.54+ | 1.74H+(fumarate)

4.77H+ | 3.57H+ | 2.35H+ | 0.57 | 0.13 | 1.94H+ | 0.33 | 2.96H+ |

1H NMR Spectrum of LAMPA (N-methyl-N-1-propyl Lysergamide hemifumarate) (ID 69)



1H NMR Spectrum of LAMPA (N-methyl-N-1-propyl Lysergamide hemifumarate) (ID 69)

