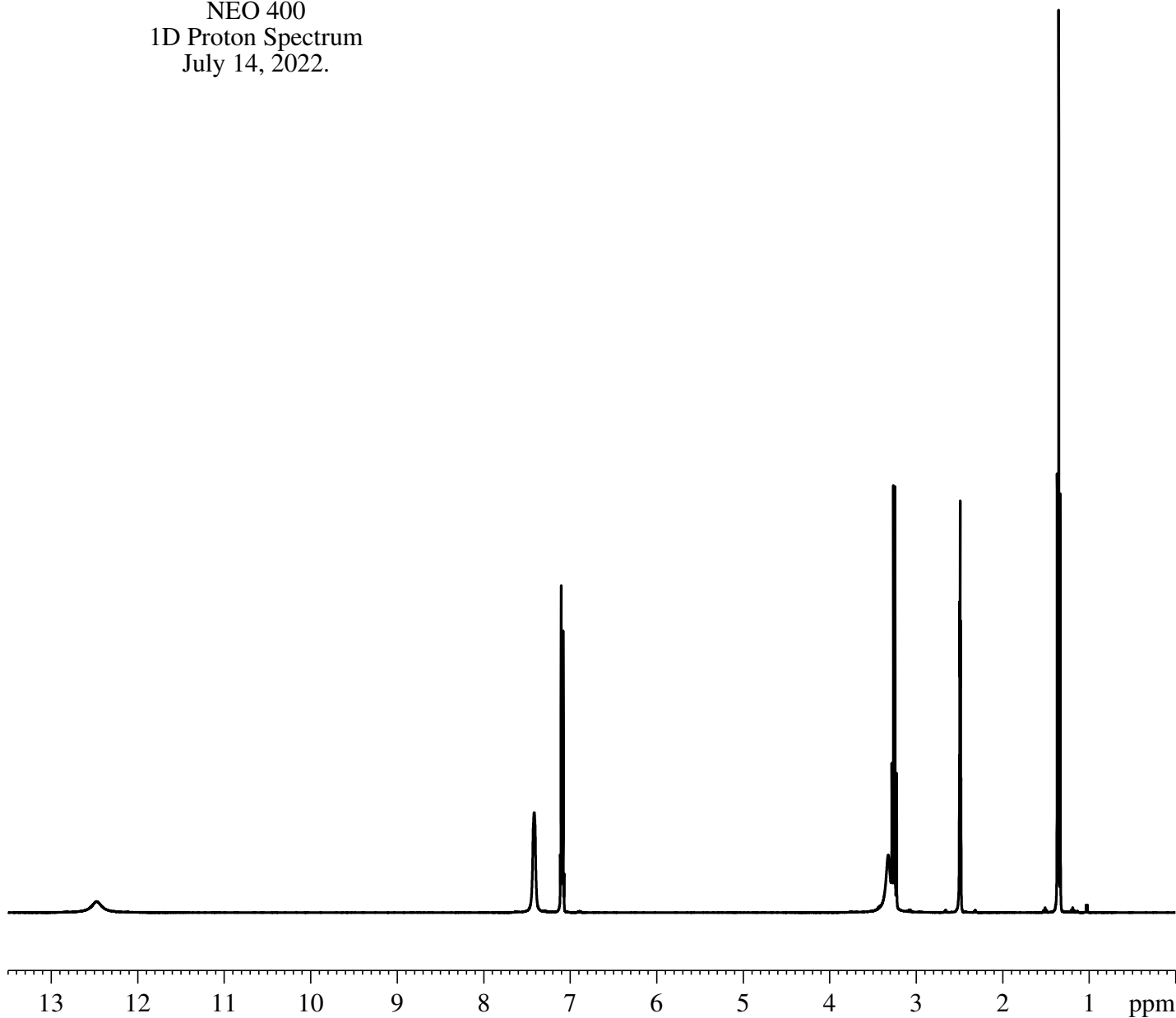


Bemethyl in DMSO-d6  
NEO 400  
1D Proton Spectrum  
July 14, 2022.

Current Data Parameters  
NAME Syntharise071422  
EXPNO 420  
PROCNO 1

F2 - Acquisition Parameters  
Date\_ 20220714  
Time 13.02 h  
INSTRUM Avance Neo 400  
PROBHD Z163739\_0039 (zg30)  
PULPROG zg30  
TD 65536  
SOLVENT DMSO  
NS 16  
DS 0  
SWH 8196.722 Hz  
FIDRES 0.250144 Hz  
AQ 3.9976959 sec  
RG 19.8543  
DW 61.000 usec  
DE 13.54 usec  
TE 297.4 K  
D1 0.10000000 sec  
TD0 1  
SFO1 400.3424721 MHz  
NUC1 1H  
P0 3.33 usec  
P1 10.00 usec  
PLW1 14.20300007 W

F2 - Processing parameters  
SI 65536  
SF 400.3400074 MHz  
WDW EM  
SSB 0  
LB 0.30 Hz  
GB 0  
PC 1.00



0.493

0.012

1.000

0.016

1.056

0.892

1.257

0.033

0.012

1.578

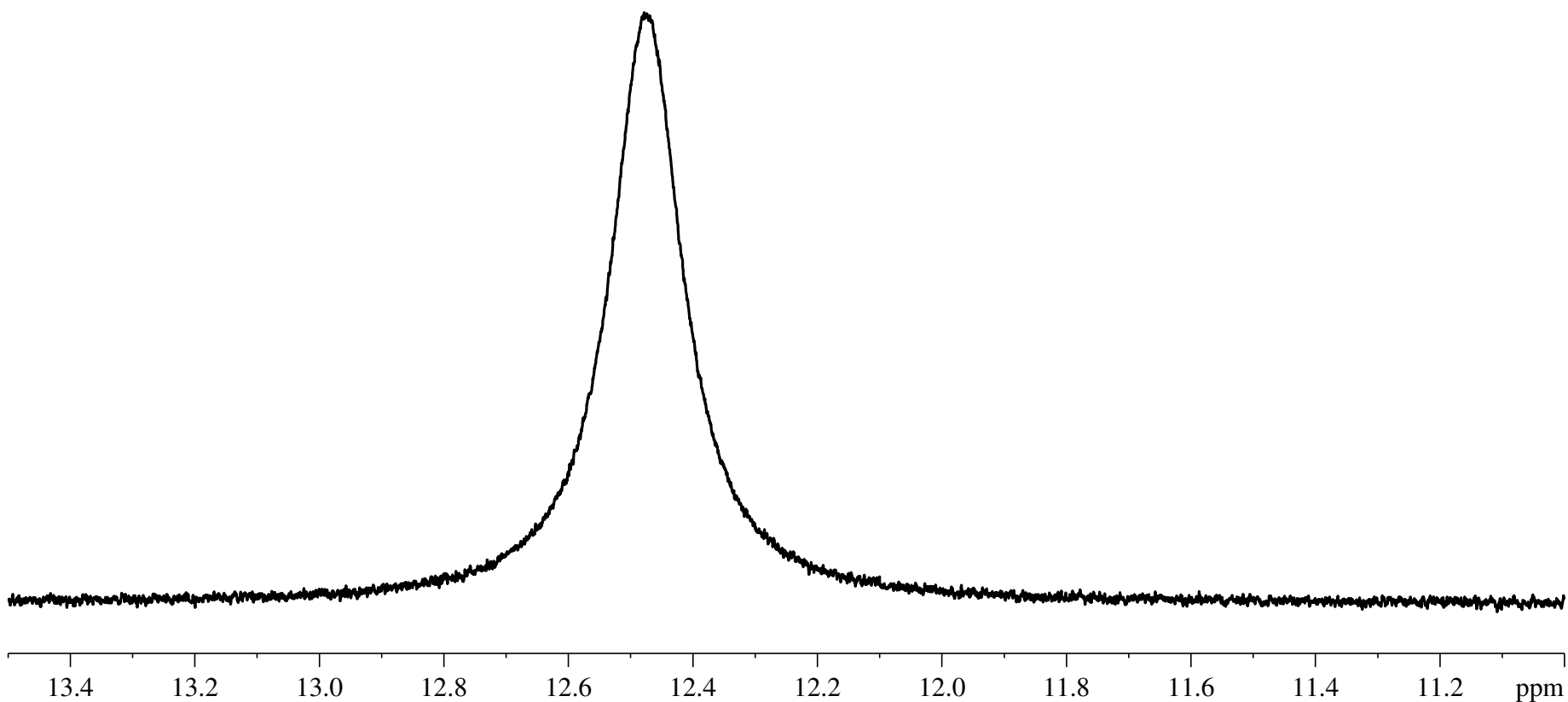
0.014

0.005

0.013

Bemethyl in DMSO-d6  
NEO 400  
1D Proton Spectrum  
July 14, 2022.

— 12.478

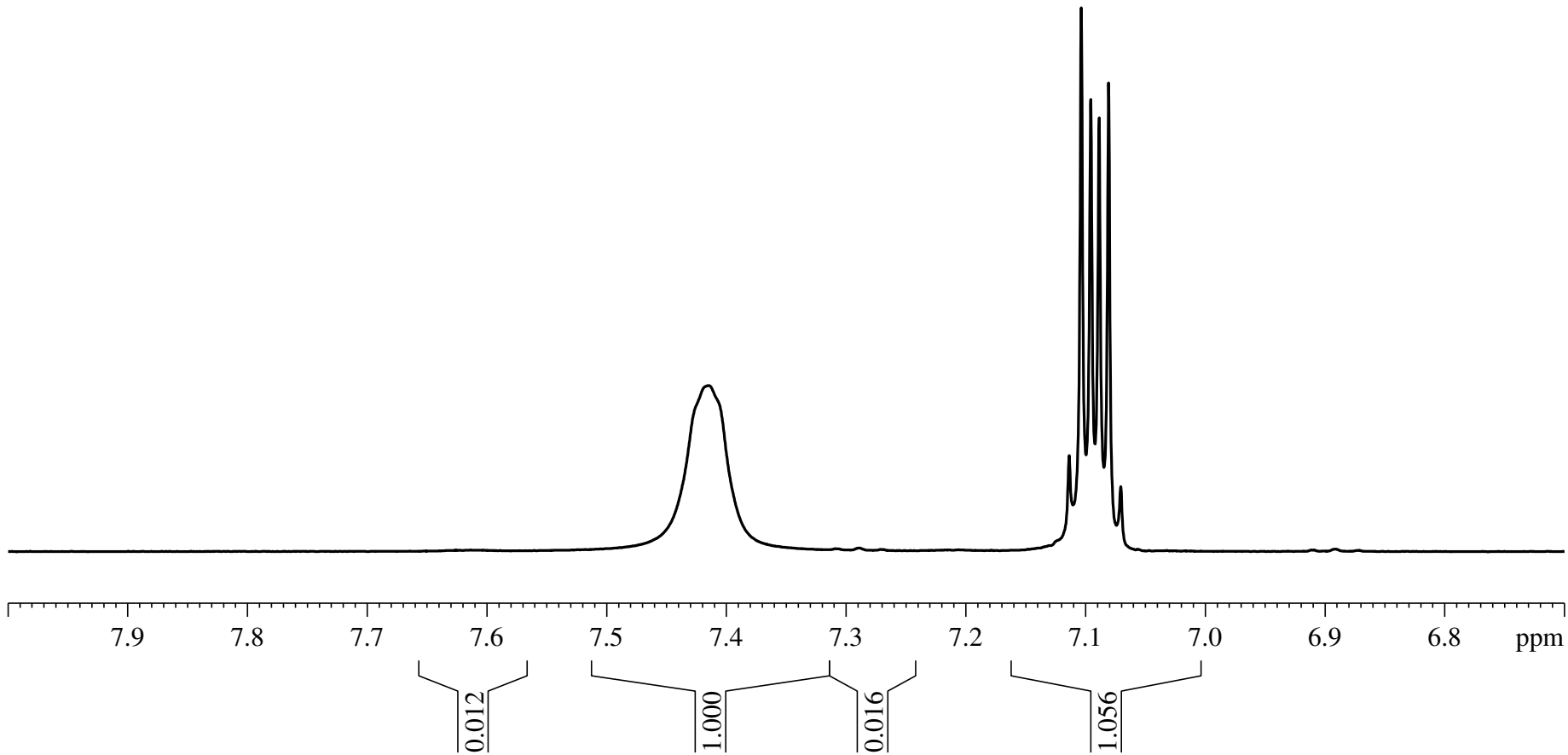


0.493

Bemethyl in DMSO-d6  
NEO 400  
1D Proton Spectrum  
July 14, 2022.

— 7.415

7.114  
7.104  
7.096  
7.089  
7.081  
7.071



Bemethyl in DMSO-d6  
NEO 400  
1D Proton Spectrum  
July 14, 2022.

