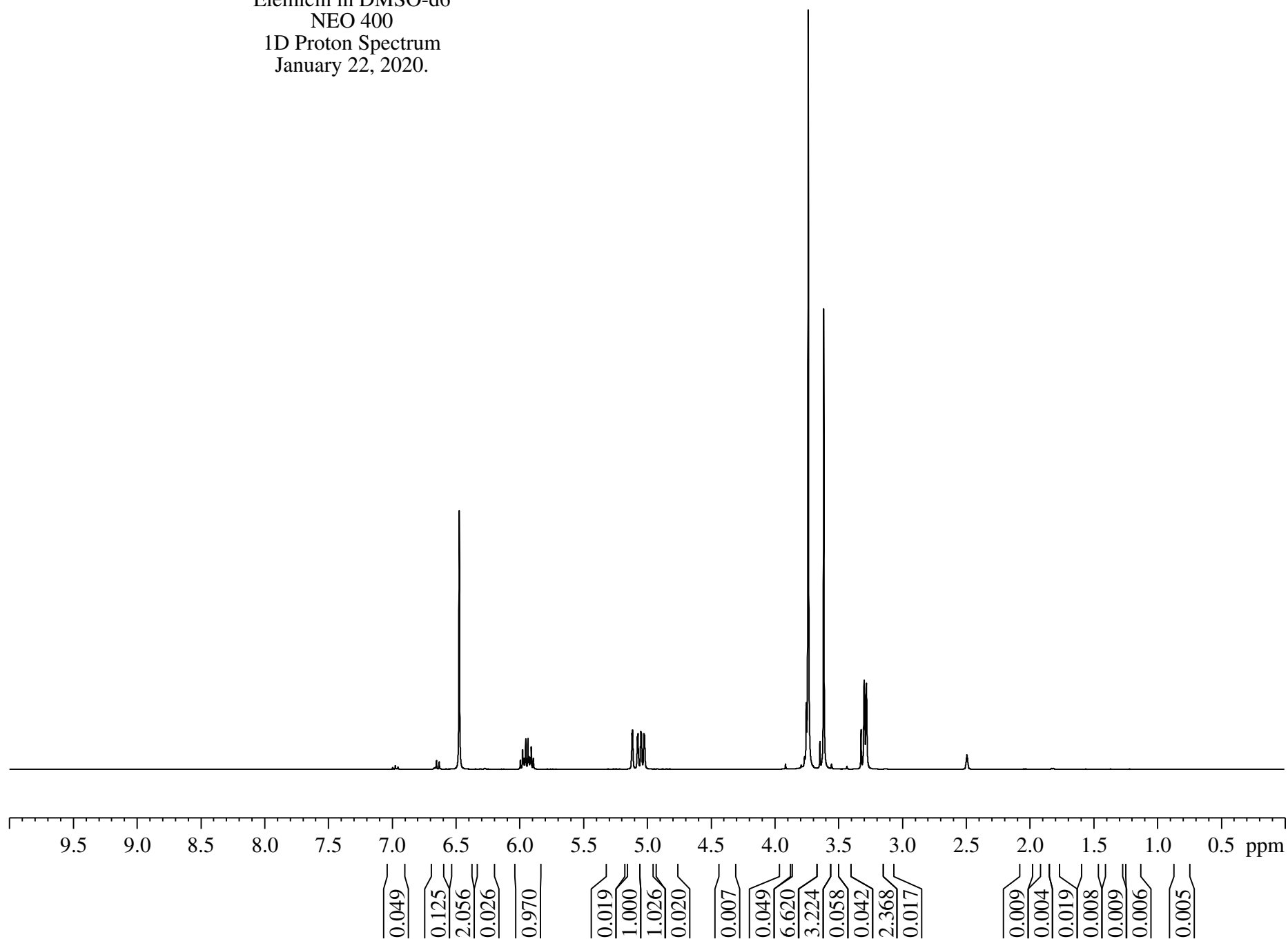
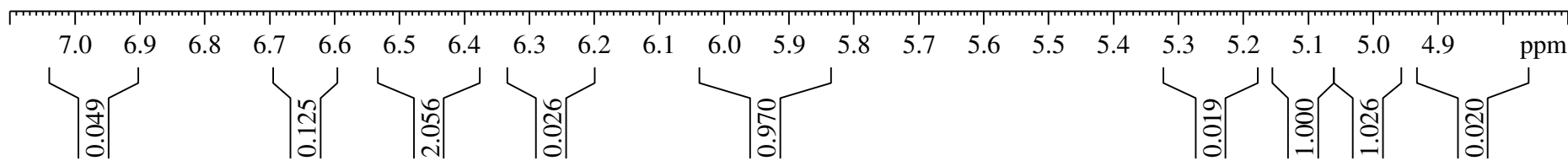
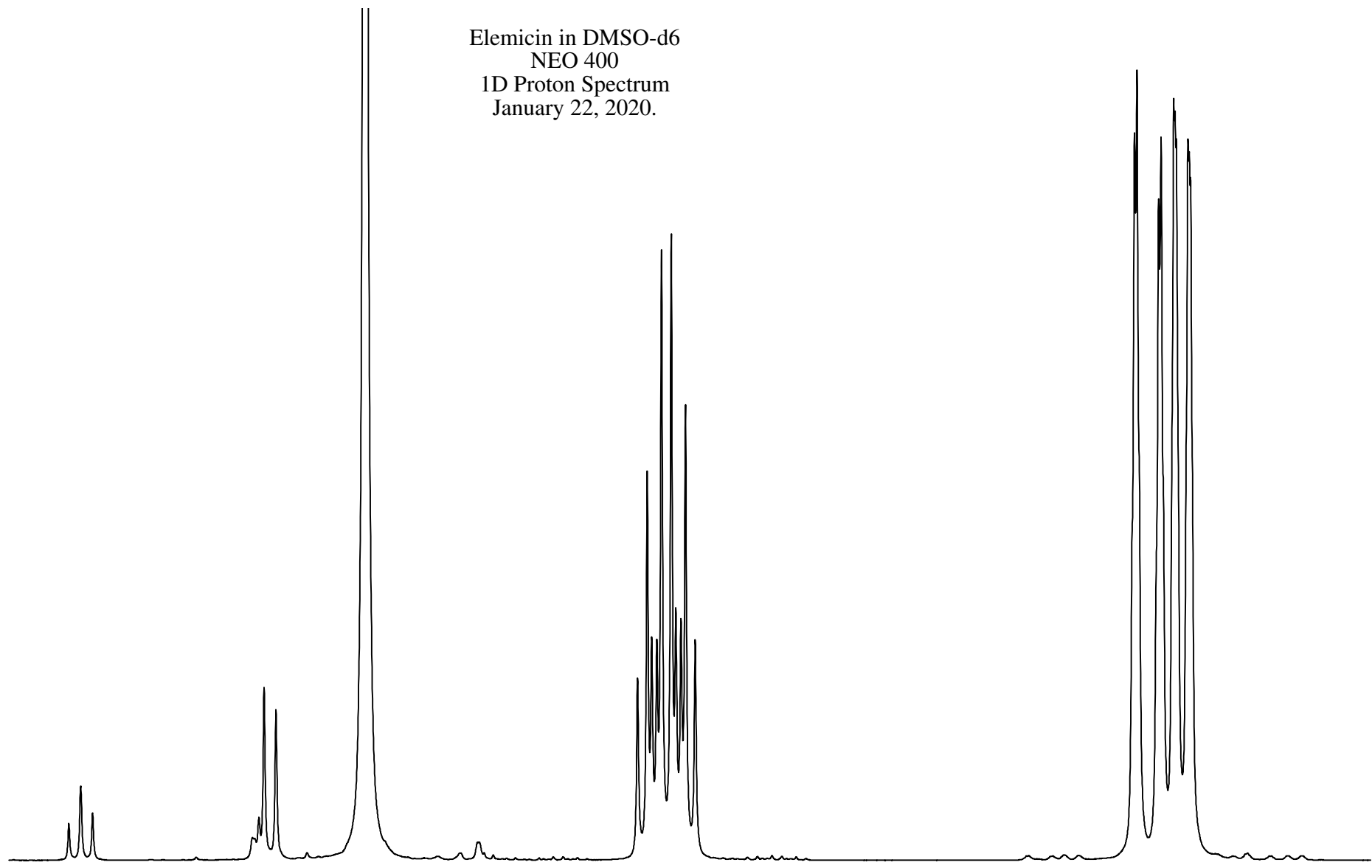


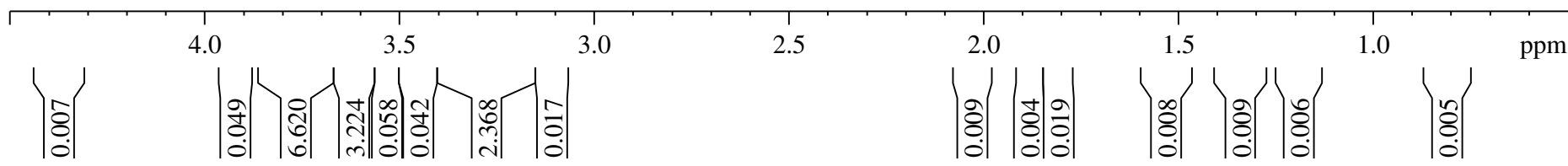
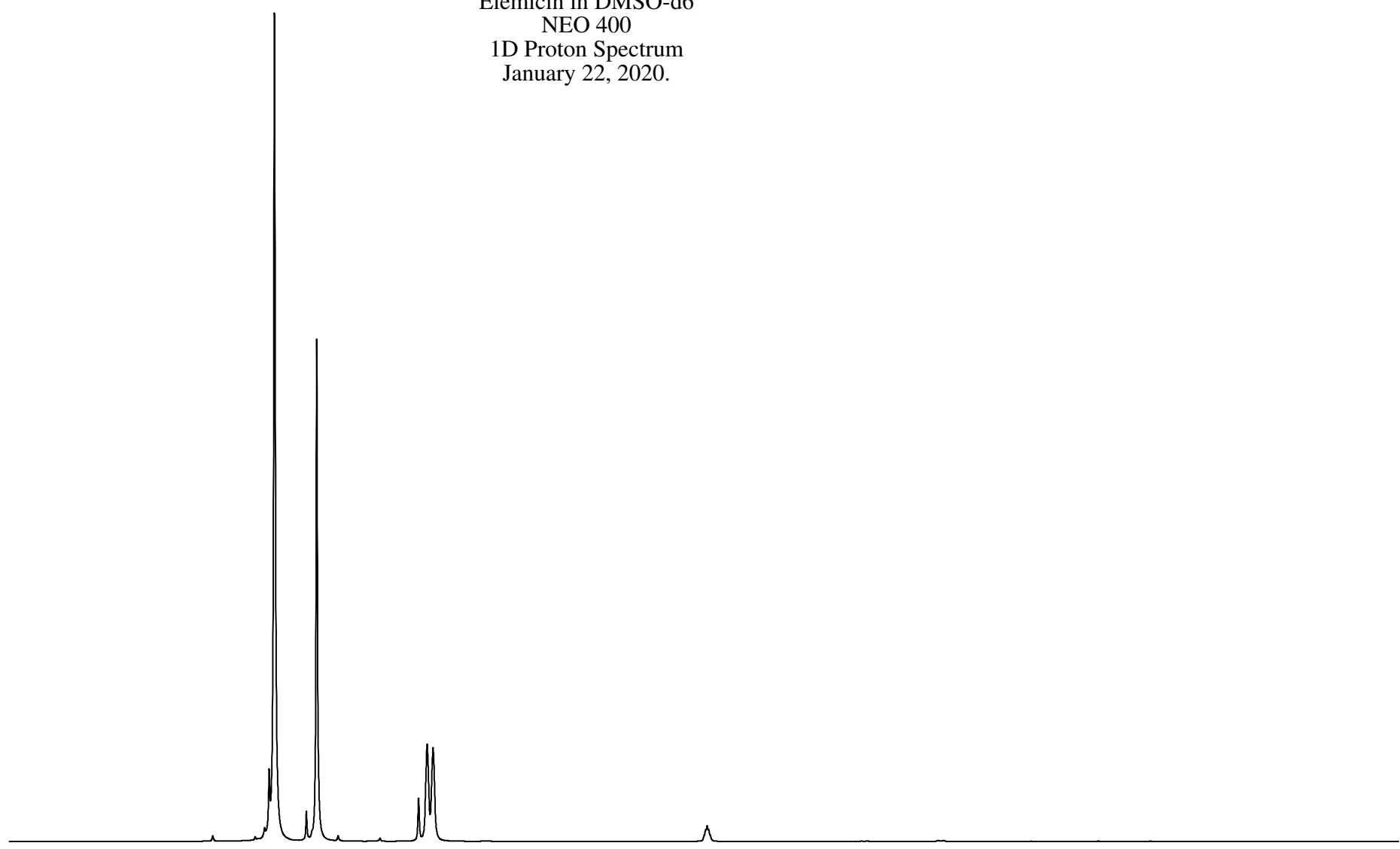
Elemicin in DMSO-d6
NEO 400
1D Proton Spectrum
January 22, 2020.



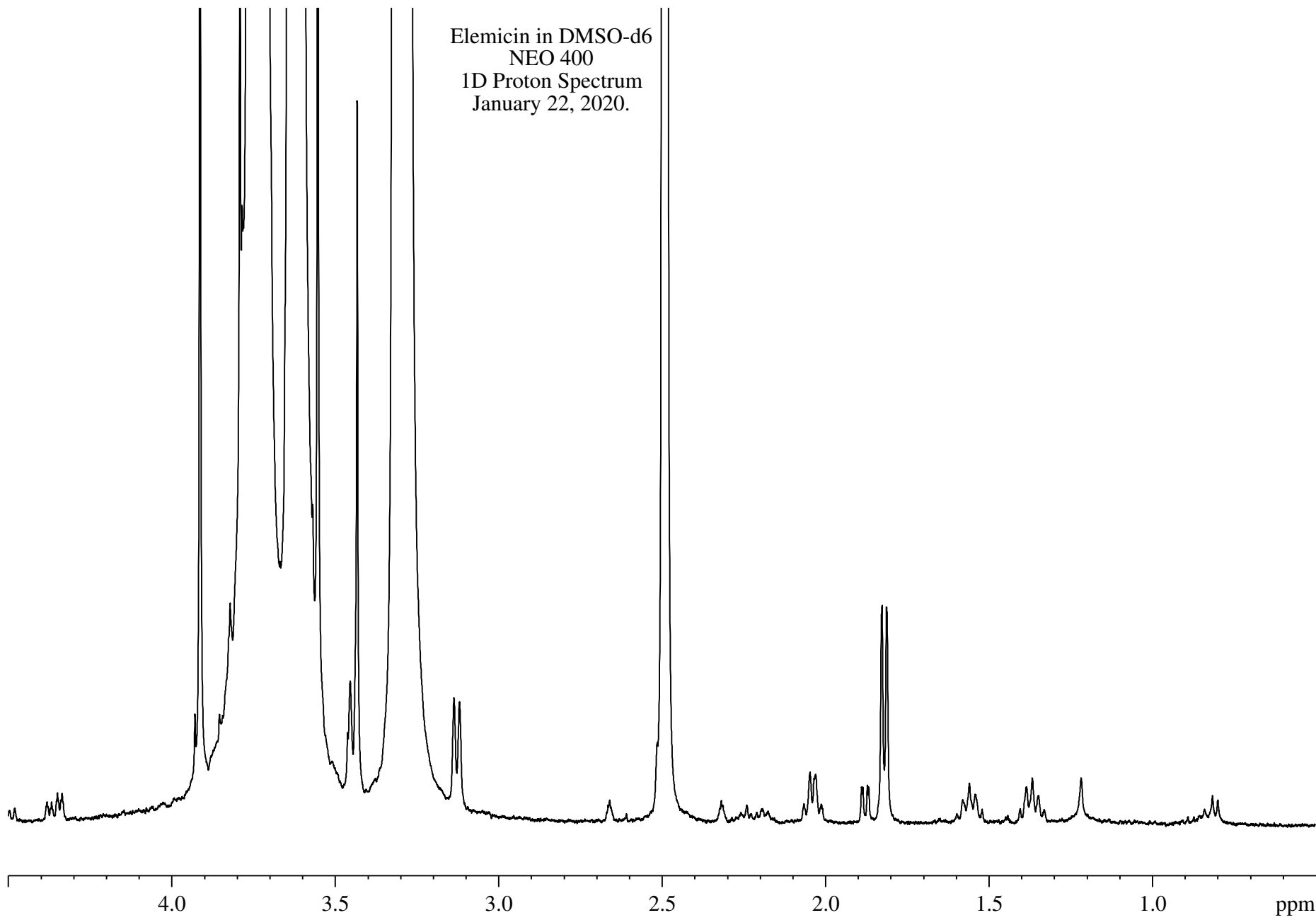
Elemicin in DMSO-d6
NEO 400
1D Proton Spectrum
January 22, 2020.



Elemicin in DMSO-d6
NEO 400
1D Proton Spectrum
January 22, 2020.



Elemicin in DMSO-d6
NEO 400
1D Proton Spectrum
January 22, 2020.



0.007

0.049

6.620

3.224

0.058

0.042

2.368

0.017

0.009

0.004

0.019

0.008

0.009

0.006

0.005