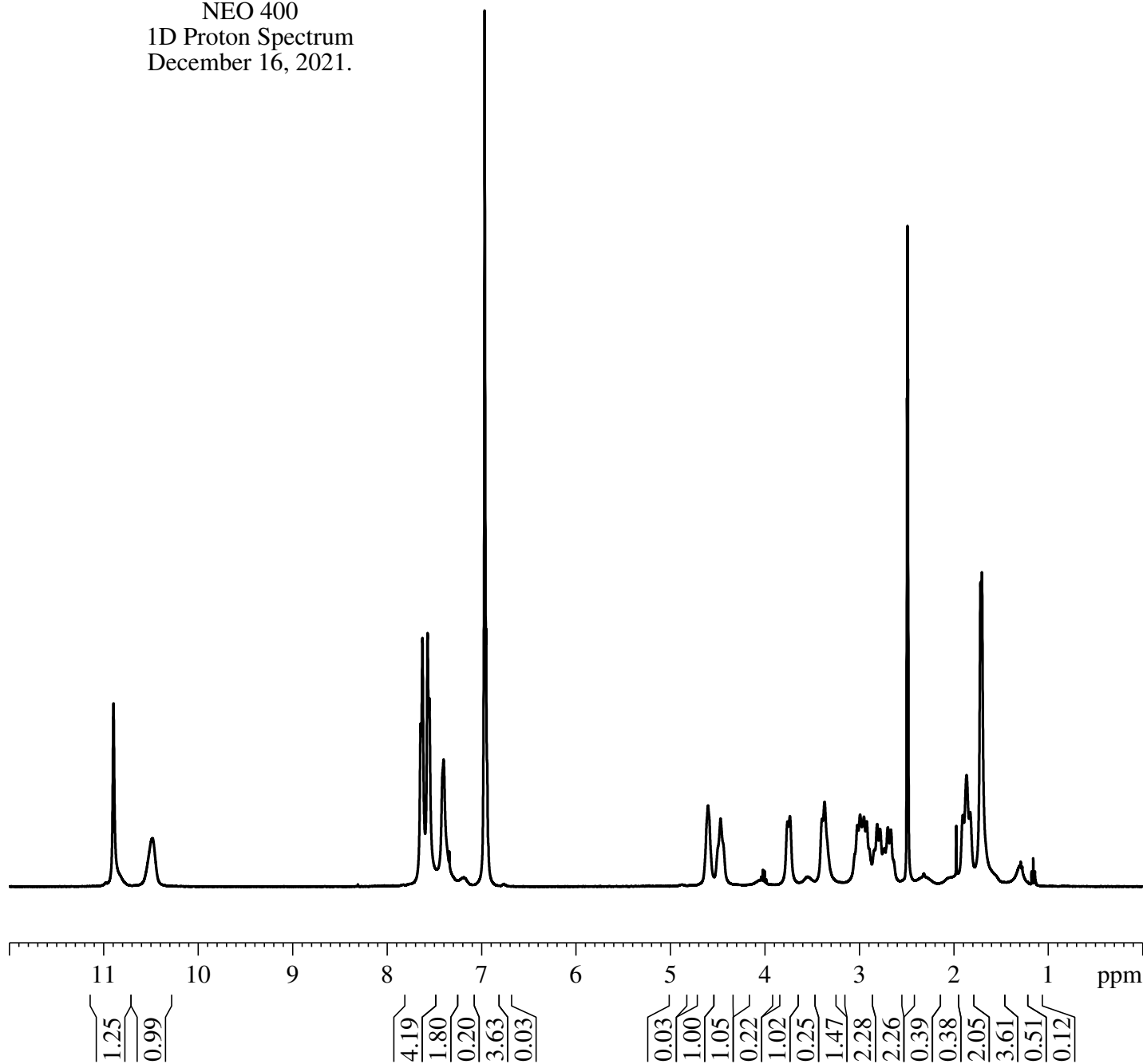


Clorphine in DMSO-d6  
NEO 400  
1D Proton Spectrum  
December 16, 2021.

Current Data Parameters  
NAME Syntharise121621  
EXPNO 440  
PROCNO 1

F2 - Acquisition Parameters  
Date\_ 20211216  
Time 10.27 h  
INSTRUM Avance Neo 400  
PROBHD Z163739\_0039 (  
PULPROG zg30  
TD 65536  
SOLVENT DMSO  
NS 16  
DS 0  
SWH 8196.722 Hz  
FIDRES 0.250144 Hz  
AQ 3.9976959 sec  
RG 19.8543  
DW 61.000 usec  
DE 13.54 usec  
TE 297.9 K  
D1 0.10000000 sec  
TD0 1  
SFO1 400.3424721 MHz  
NUC1 1H  
P0 3.33 usec  
P1 10.00 usec  
PLW1 14.20300007 W

F2 - Processing parameters  
SI 65536  
SF 400.3400074 MHz  
WDW EM  
SSB 0  
LB 0.30 Hz  
GB 0  
PC 1.00



Clorphine in DMSO-d6  
NEO 400  
1D Proton Spectrum  
December 16, 2021.

