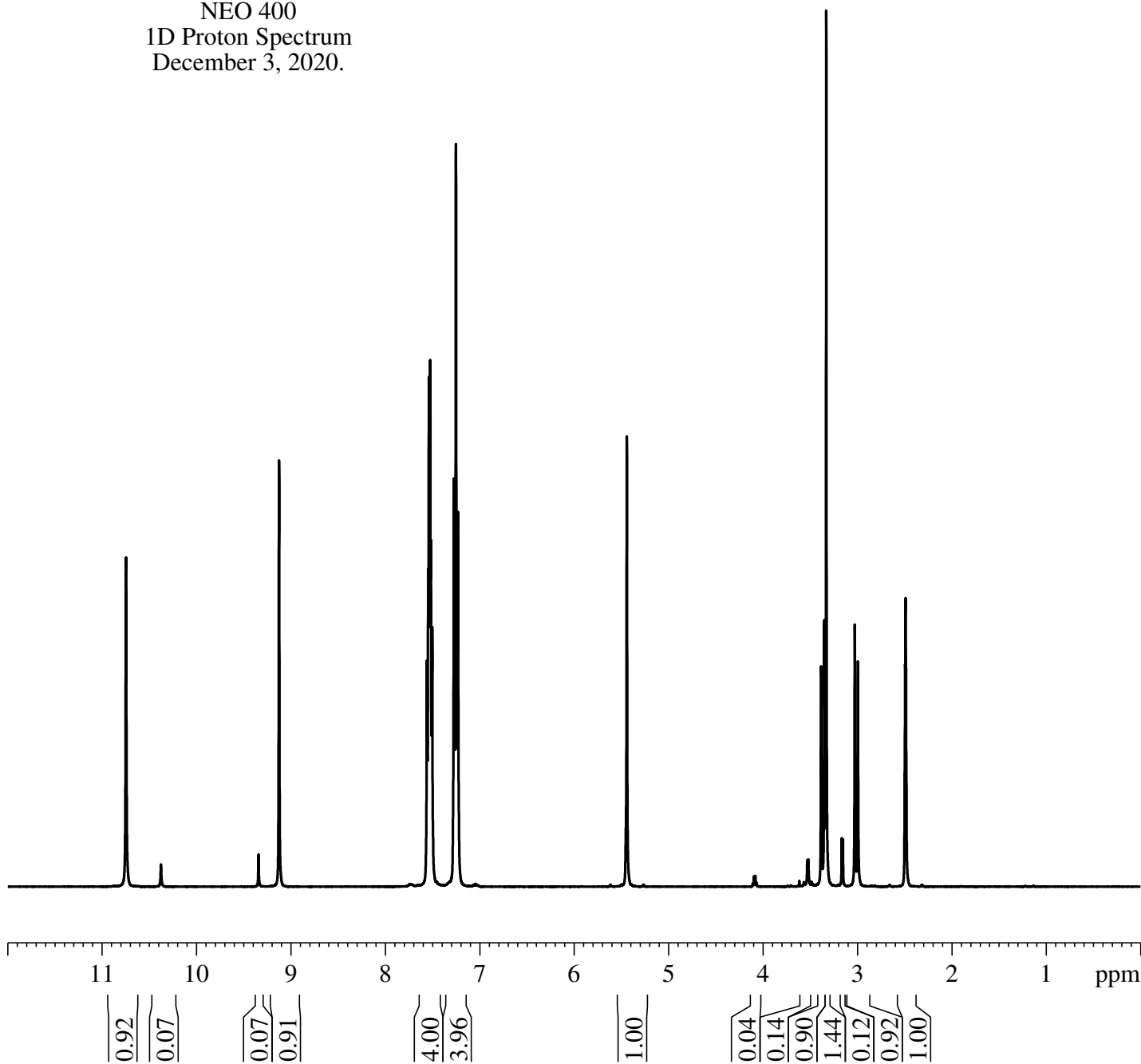


Fluorafinil in DMSO-d6
NEO 400
1D Proton Spectrum
December 3, 2020.

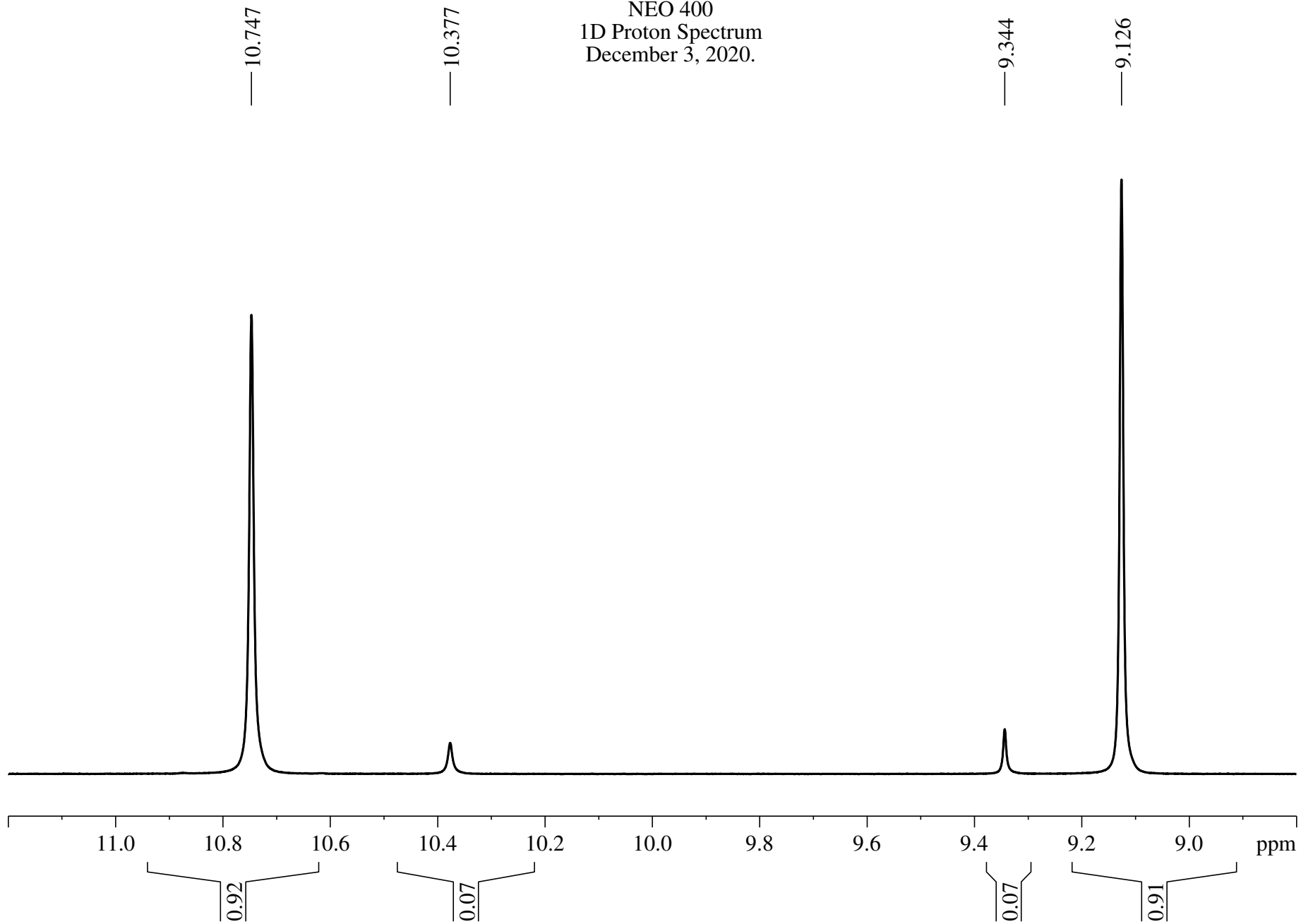
Current Data Parameters
NAME Syntharise120320
EXPNO 11
PROCNO 1

F2 - Acquisition Parameters
Date_ 20201203
Time 11.02 h
INSTRUM Avance Neo 400
PROBHD Z163739_0039 (
PULPROG zg30
TD 65536
SOLVENT DMSO
NS 16
DS 0
SWH 8196.722 Hz
FIDRES 0.250144 Hz
AQ 3.9976959 sec
RG 101
DW 61.000 usec
DE 13.54 usec
TE 297.6 K
D1 0.10000000 sec
TD0 1
SFO1 400.3424721 MHz
NUC1 1H
P0 3.33 usec
P1 10.00 usec
PLW1 14.20300007 W

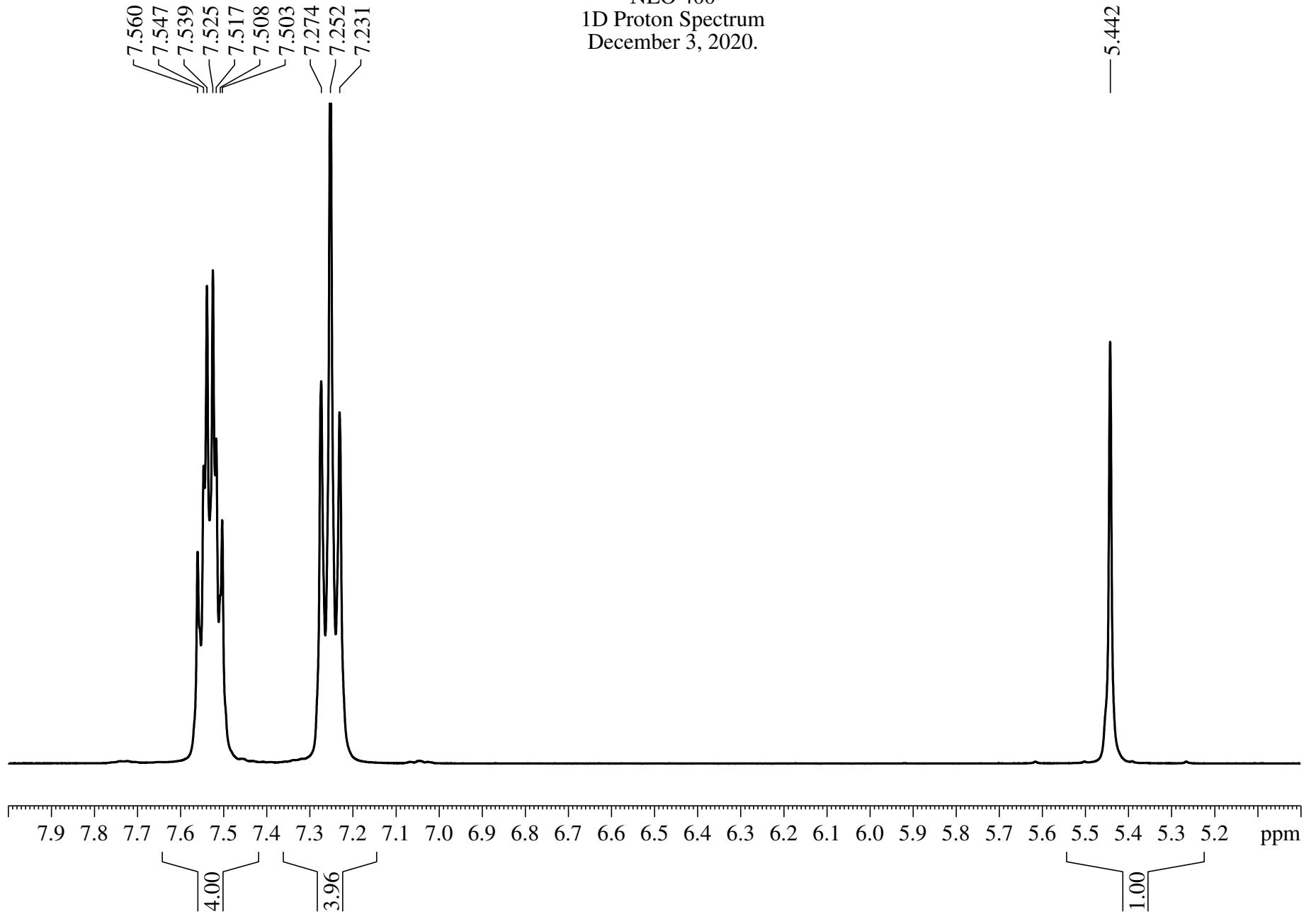
F2 - Processing parameters
SI 65536
SF 400.340068 MHz
WDW EM
SSB 0
LB 0.30 Hz
GB 0
PC 1.00



Fluorafinil in DMSO-d6
NEO 400
1D Proton Spectrum
December 3, 2020.



Fluorafinil in DMSO-d6
NEO 400
1D Proton Spectrum
December 3, 2020.



4.107
4.094
4.081
4.068

3.530
3.519

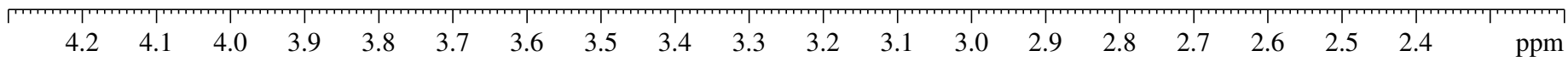
3.384
3.350
3.330

3.166
3.153

3.027
2.994

2.494
2.490
2.486

Fluorafinil in DMSO-d6
NEO 400
1D Proton Spectrum
December 3, 2020.



0.04

0.14

0.90
1.44

0.12

0.92

1.00

ppm