

GSN-YRS-TMD-004-63
 1H-NMR/CDCL3
 19-03-2016
 Analysed By-KRP



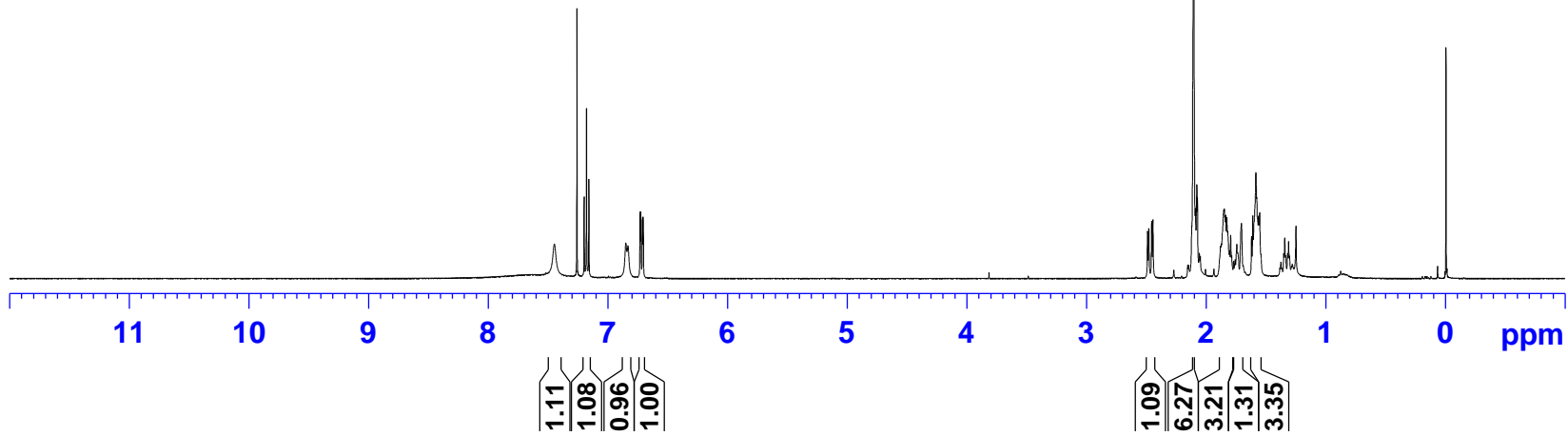
7.448
 7.200
 7.180
 7.160
 6.851
 6.834
 6.733
 6.731
 6.726
 6.725
 6.713
 6.711
 6.707
 6.705
 2.490
 2.479
 2.455
 2.445
 2.105
 1.880
 1.872
 1.856
 1.853
 1.848
 1.843
 1.836
 1.827
 1.820
 1.805
 1.795
 1.787
 1.771
 1.744
 1.734
 1.705
 1.621
 1.611

Current Data Parameters
 NAME QC11160319044
 EXPNO 1
 PROCNO 1

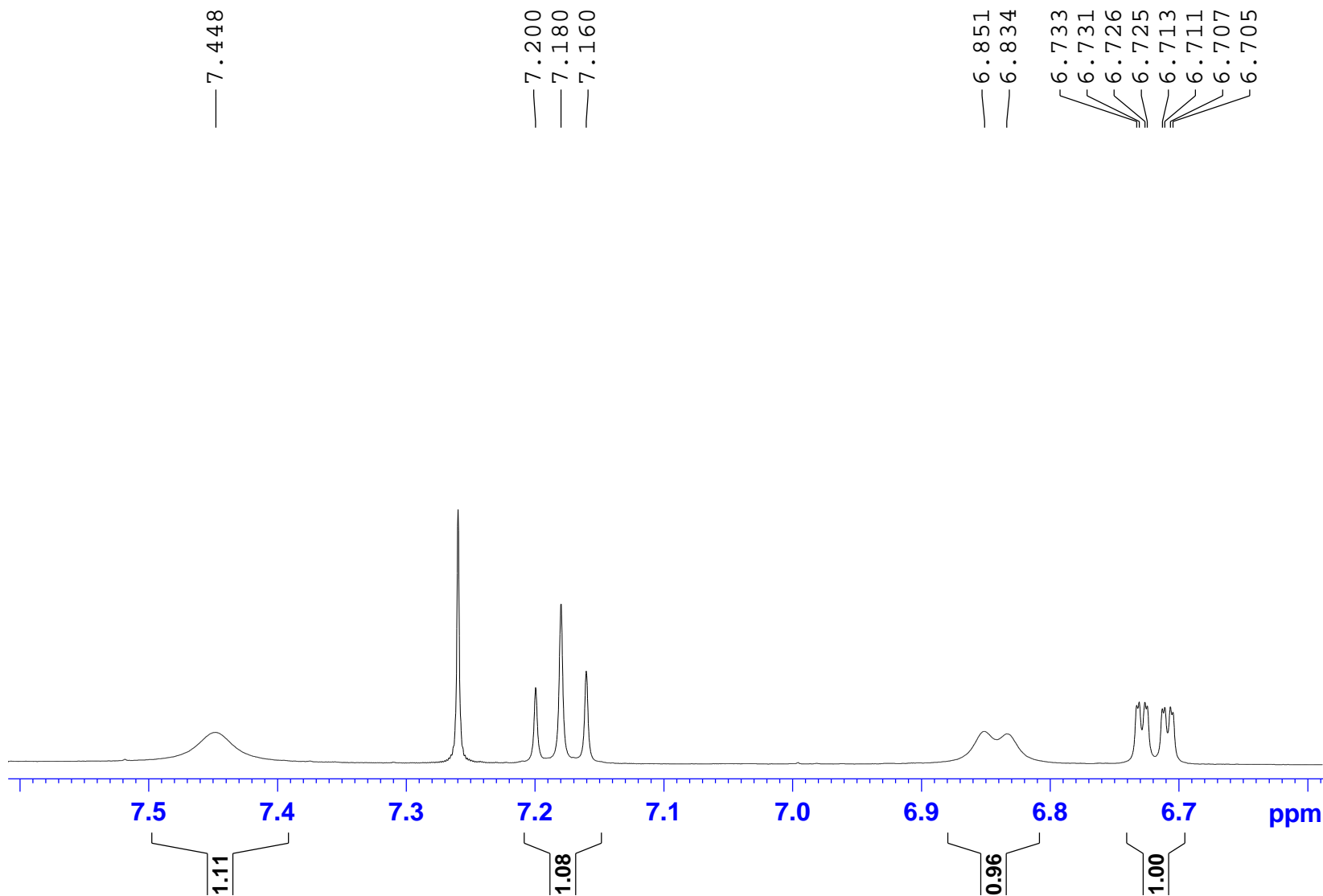
F2 - Acquisition Parameters
 Date_ 20160319
 Time 21.10
 INSTRUM spect
 PROBHD 5 mm PABBO BB/
 PULPROG zg30
 TD 24036
 SOLVENT CDCl3
 NS 16
 DS 2
 SWH 8012.820 Hz
 FIDRES 0.333367 Hz
 AQ 1.4998465 sec
 RG 195.98
 DW 62.400 usec
 DE 6.50 usec
 TE 295.3 K
 D1 1.00000000 sec
 TD0 1

==== CHANNEL f1 =====
 SF01 400.1324710 MHz
 NUC1 1H
 P1 14.00 usec
 PLW1 13.47000027 W

F2 - Processing parameters
 SI 65536
 SF 400.1300100 MHz
 WDW EM
 SSB 0
 LB 0.30 Hz
 GB 0
 PC 1.00



GSN-YRS-TMD-004-63
1H-NMR/CDCL3
19-03-2016
Analysed By-KRP



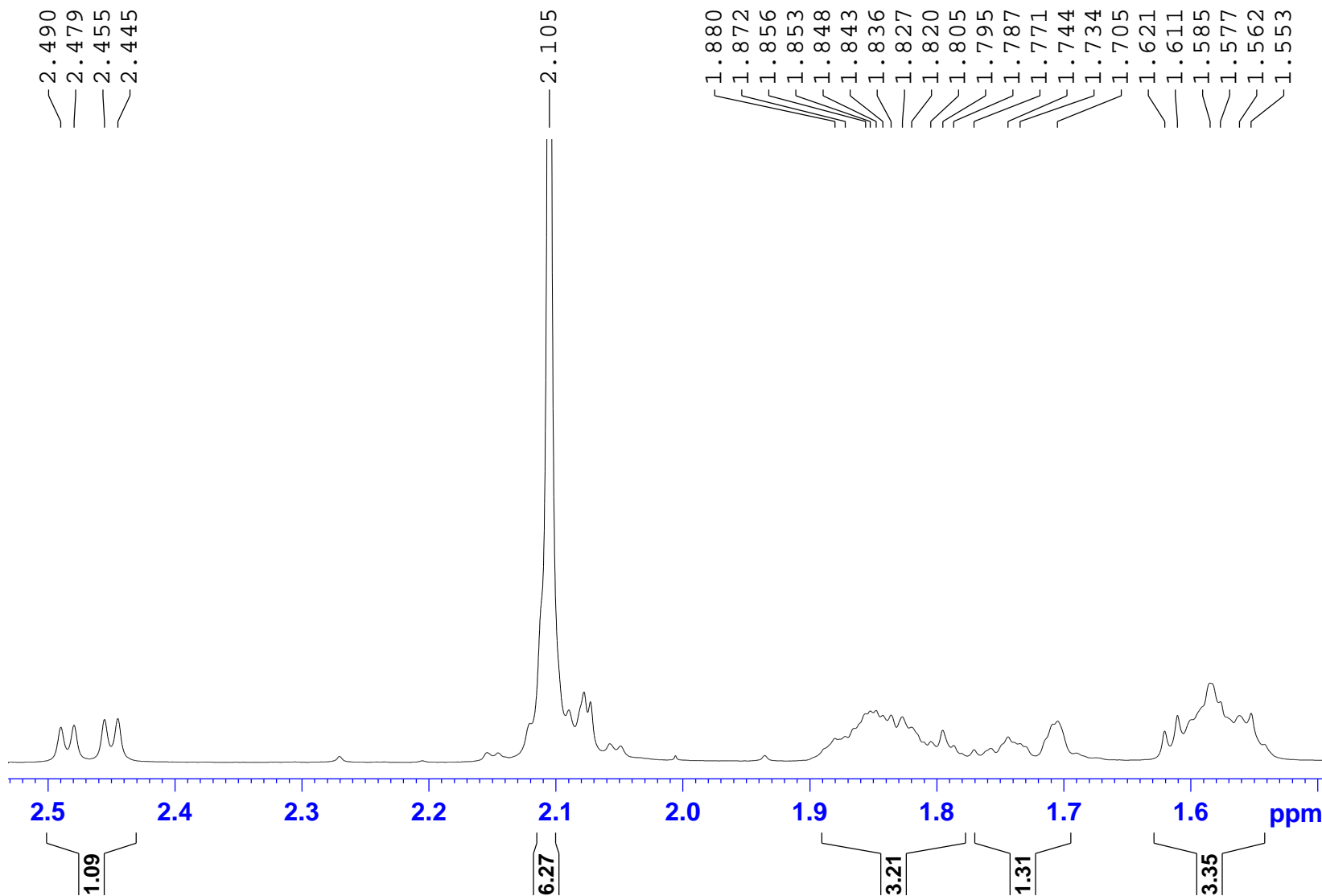
Current Data Parameters
NAME QC11160319044
EXPNO 1
PROCNO 1

F2 - Acquisition Parameters
Date_ 20160319
Time 21.10
INSTRUM spect
PROBHD 5 mm PABBO BB/
PULPROG zg30
TD 24036
SOLVENT CDCl3
NS 16
DS 2
SWH 8012.820 Hz
FIDRES 0.333367 Hz
AQ 1.4998465 sec
RG 195.98
DW 62.400 usec
DE 6.50 usec
TE 295.3 K
D1 1.00000000 sec
TD0 1

==== CHANNEL f1 =====
SF01 400.1324710 MHz
NUC1 1H
P1 14.00 usec
PLW1 13.47000027 W

F2 - Processing parameters
SI 65536
SF 400.1300100 MHz
WDW EM
SSB 0
LB 0.30 Hz
GB 0
PC 1.00

GSN-YRS-TMD-004-63
 1H-NMR/CDCL3
 19-03-2016
 Analysed By-KRP



Current Data Parameters
 NAME QC11160319044
 EXPNO 1
 PROCNO 1

F2 - Acquisition Parameters
 Date_ 20160319
 Time 21.10
 INSTRUM spect
 PROBHD 5 mm PABBO BB/
 PULPROG zg30
 TD 24036
 SOLVENT CDCl3
 NS 16
 DS 2
 SWH 8012.820 Hz
 FIDRES 0.333367 Hz
 AQ 1.4998465 sec
 RG 195.98
 DW 62.400 usec
 DE 6.50 usec
 TE 295.3 K
 D1 1.00000000 sec
 TD0 1

==== CHANNEL f1 =====
 SF01 400.1324710 MHz
 NUC1 1H
 P1 14.00 usec
 PLW1 13.47000027 W

F2 - Processing parameters
 SI 65536
 SF 400.1300100 MHz
 WDW EM
 SSB 0
 LB 0.30 Hz
 GB 0
 PC 1.00

GSN-YRS-TMD-004-63

GSN-YRS-TMD-UU4-63
1H-NMR/CDCL3
19-03-2016
Analysed By-KRP

#	ADDRESS	FREQUENCY		INTENSITY
		[Hz]	[PPM]	
1	28521.7	2980.168	7.4480	0.29
2	29334.6	2880.776	7.1996	0.68
3	29399.1	2872.893	7.1799	1.42
4	29463.2	2865.051	7.1603	0.82
5	30475.5	2741.291	6.8510	0.29
6	30532.1	2734.368	6.8337	0.27
7	30862.3	2693.995	6.7328	0.52
8	30868.5	2693.235	6.7309	0.55
9	30882.9	2691.475	6.7265	0.55
10	30888.8	2690.754	6.7247	0.52
11	30927.4	2686.033	6.7129	0.49
12	30933.6	2685.272	6.7110	0.51
13	30948.0	2683.512	6.7066	0.51
14	30954.2	2682.752	6.7047	0.46
15	44747.7	996.284	2.4899	0.39
16	44781.7	992.122	2.4795	0.41
17	44860.3	982.519	2.4555	0.48
18	44894.6	978.318	2.4450	0.49
19	46007.0	842.314	2.1051	15.00
20	46742.7	752.364	1.8803	0.27
21	46769.2	749.123	1.8722	0.29
22	46821.5	742.721	1.8562	0.54
23	46833.7	741.241	1.8525	0.57
24	46848.7	739.400	1.8479	0.58
25	46866.1	737.280	1.8426	0.52
26	46887.3	734.679	1.8361	0.52
27	46916.5	731.118	1.8272	0.51
28	46940.3	728.197	1.8199	0.39
29	46989.8	722.155	1.8048	0.23
30	47020.5	718.393	1.7954	0.36
31	47048.7	714.952	1.7868	0.19
32	47101.0	708.550	1.7708	0.14
33	47188.7	697.827	1.7440	0.28
34	47219.8	694.026	1.7345	0.21
35	47316.4	682.222	1.7050	0.46
36	47592.6	648.451	1.6206	0.35
37	47625.6	644.409	1.6105	0.52
38	47709.7	634.126	1.5848	0.88
39	47736.2	630.885	1.5767	0.67
40	47785.0	624.923	1.5618	0.52
41	47815.4	621.202	1.5525	0.54
42	47849.5	617.040	1.5421	0.20