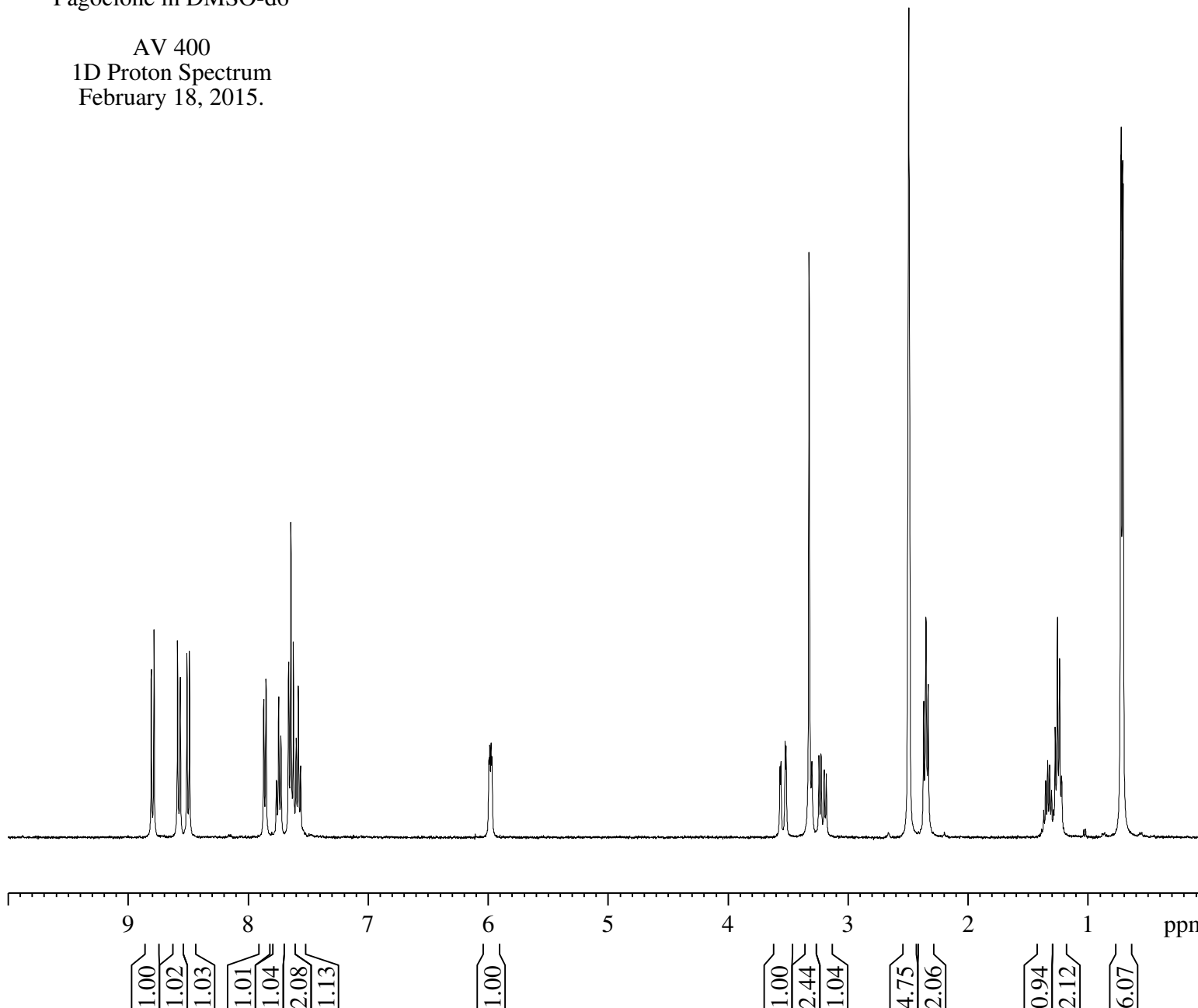


Pagoclone in DMSO-d6

AV 400
1D Proton Spectrum
February 18, 2015.



Current Data Parameters
NAME S-Pagoclone
EXPNO 1
PROCNO 1

F2 - Acquisition Parameters
Date_ 20150218
Time 9.47
INSTRUM av400
PROBHD 5 mm PABBO BB-
PULPROG zg30
TD 32768
SOLVENT DMSO
NS 16
DS 0
SWH 8278.146 Hz
FIDRES 0.252629 Hz
AQ 1.9791873 sec
RG 1149.4
DW 60.400 usec
DE 6.00 usec
TE 294.6 K
D1 2.5000000 sec
TD0 1

===== CHANNEL f1 =====
NUC1 1H
P1 9.80 usec
PL1 0 dB
PL1W 9.04279137 W
SFO1 400.1324710 MHz

F2 - Processing parameters
SI 16384
SF 400.1300066 MHz
WDW EM
SSB 0
LB 0.30 Hz
GB 0
PC 1.00

Pagoclone in DMSO-d6

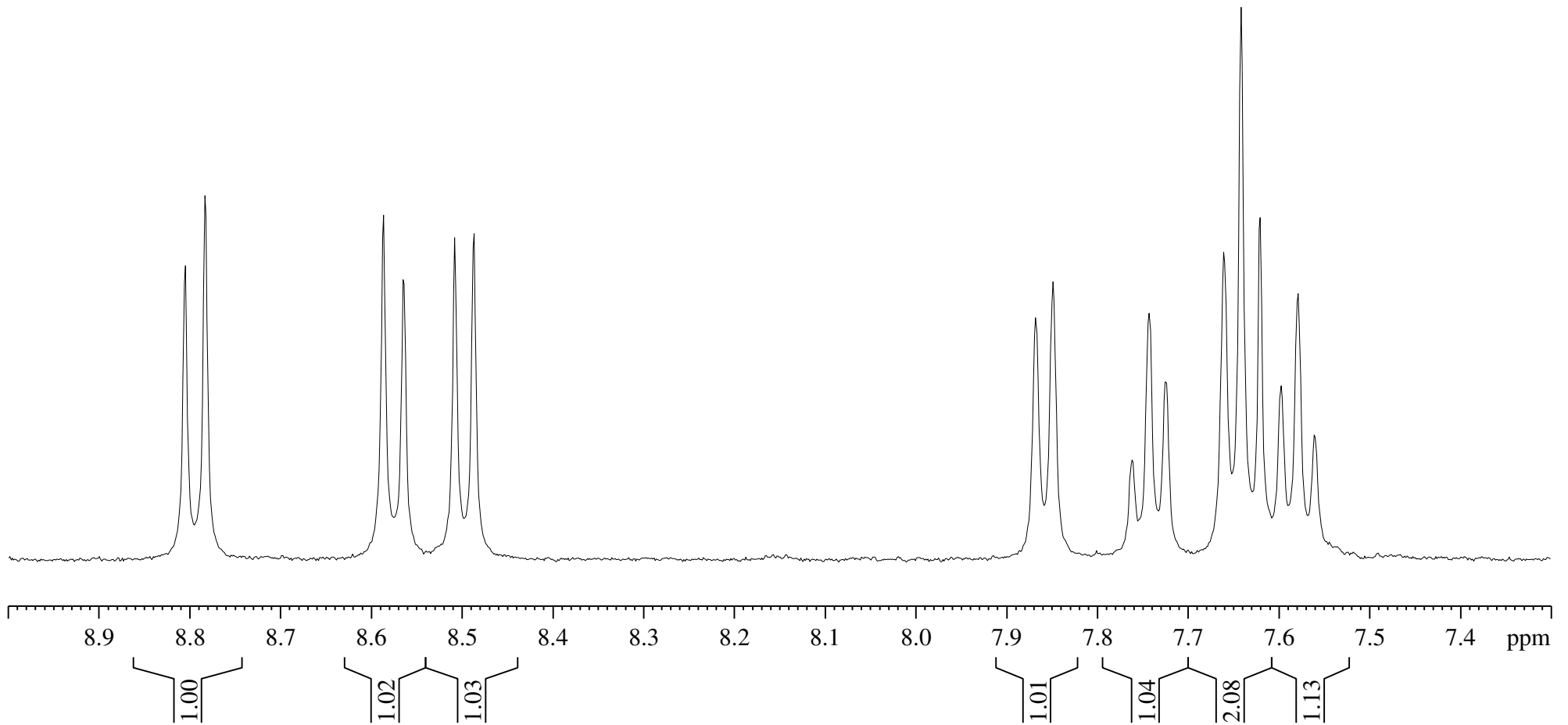
AV 400
1D Proton Spectrum
February 18, 2015.

8.805
8.783

8.587
8.565
8.508
8.487

7.868
7.849

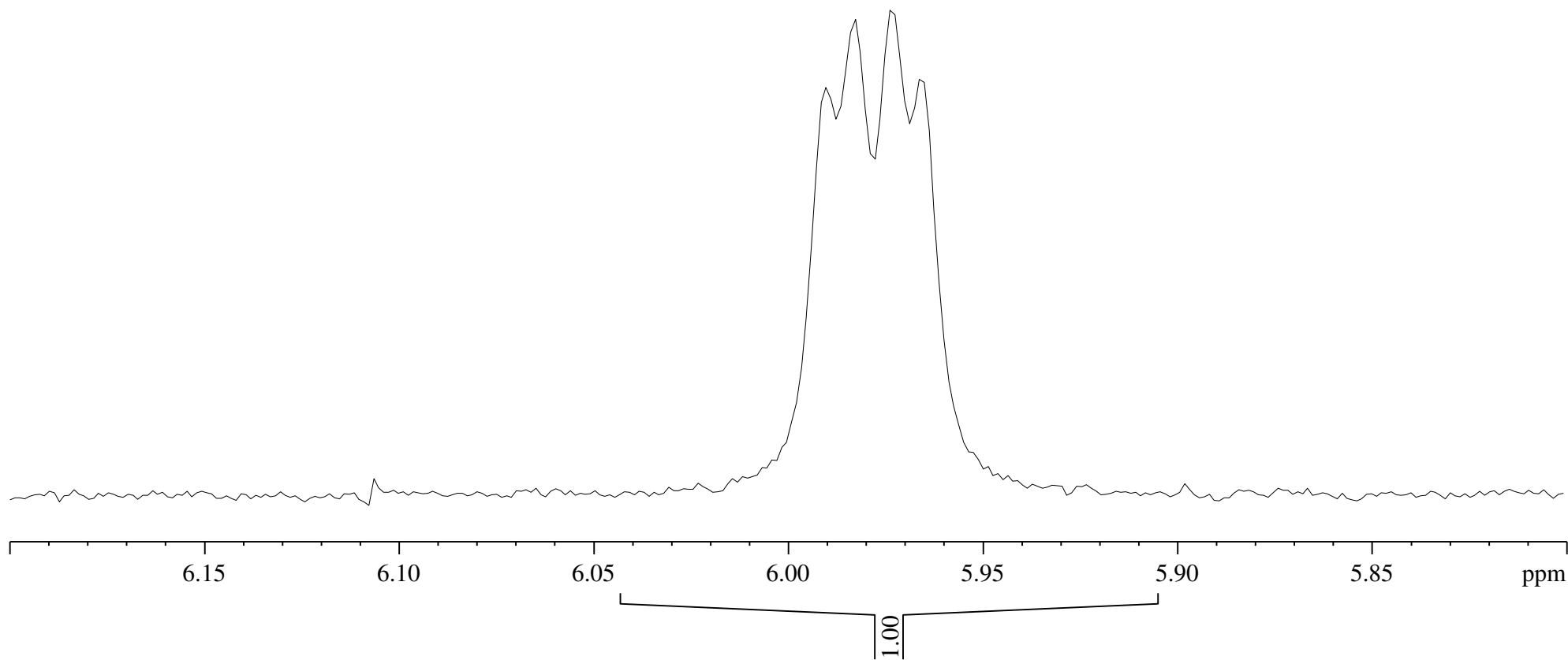
7.762
7.743
7.725
7.661
7.642
7.621
7.598
7.579
7.561



Pagoclone in DMSO-d6

AV 400
1D Proton Spectrum
February 18, 2015.

— 5.990
— 5.983
— 5.973
— 5.966



Pagoclone in DMSO-d6

AV 400
1D Proton Spectrum
February 18, 2015.

