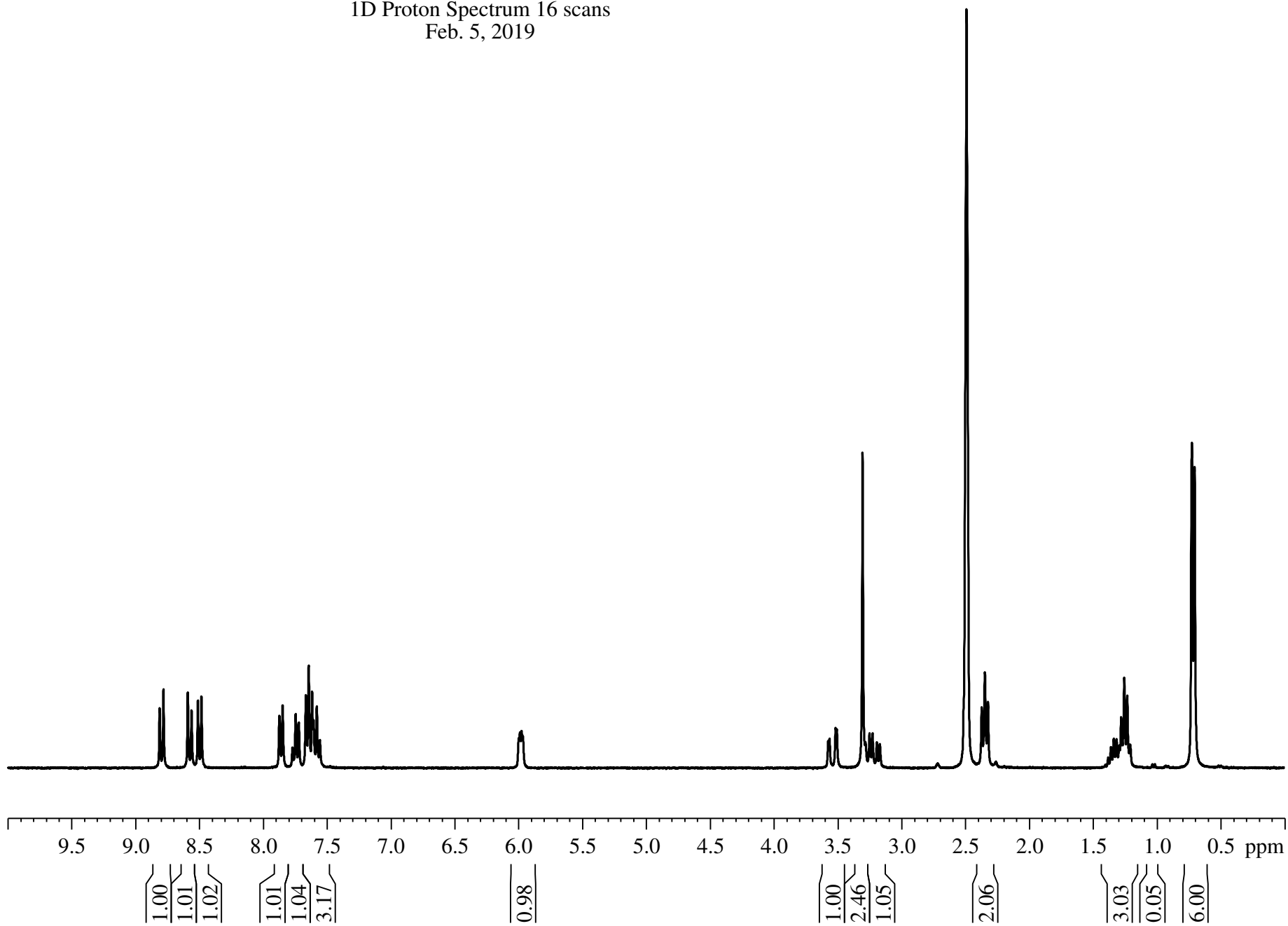


2-(7-chloro-1,8-naphthyridin-2-yl)-3-(5-methyl-2-oxohexyl)isoindolin-1-one #006 in DMSO-d6
NEO 300
1D Proton Spectrum 16 scans
Feb. 5, 2019

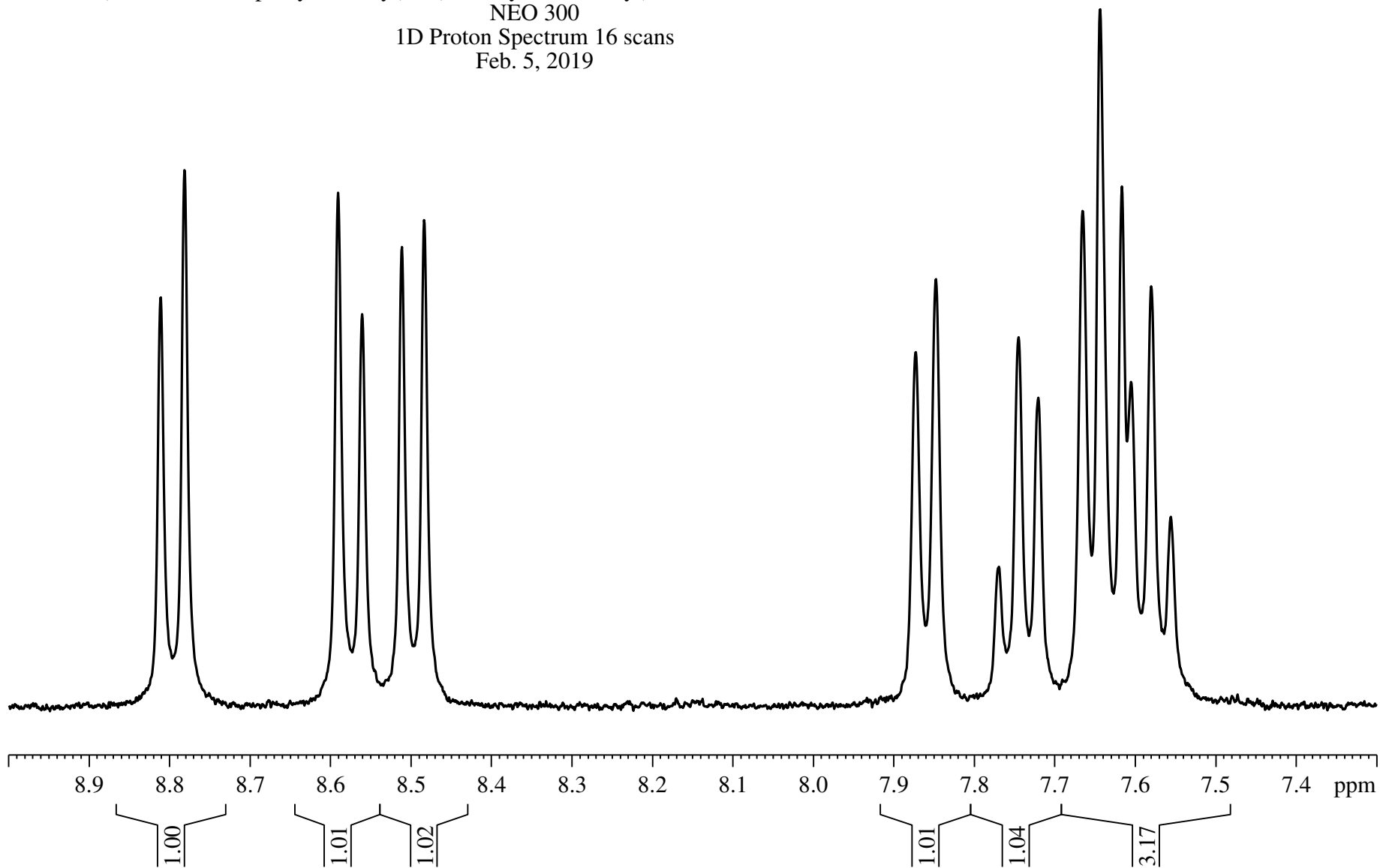


8.811
8.781

8.591
8.561
8.512
8.484

7.873
7.848
7.770
7.745
7.721
7.665
7.644
7.617
7.605
7.580
7.556

2-(7-chloro-1,8-naphthyridin-2-yl)-3-(5-methyl-2-oxohexyl)isoindolin-1-one #006 in DMSO-d6
NEO 300
1D Proton Spectrum 16 scans
Feb. 5, 2019



5.998
5.989
5.975
5.967

3.574
3.563
3.516
3.506
3.304
3.281
3.250
3.226
3.193
3.169

2-(7-chloro-1,8-naphthyridin-2-yl)-3-(5-methyl-2-oxohexyl)isoindolin-1-one #006 in DMSO-d6
NEO 300
1D Proton Spectrum 16 scans
Feb. 5, 2019

