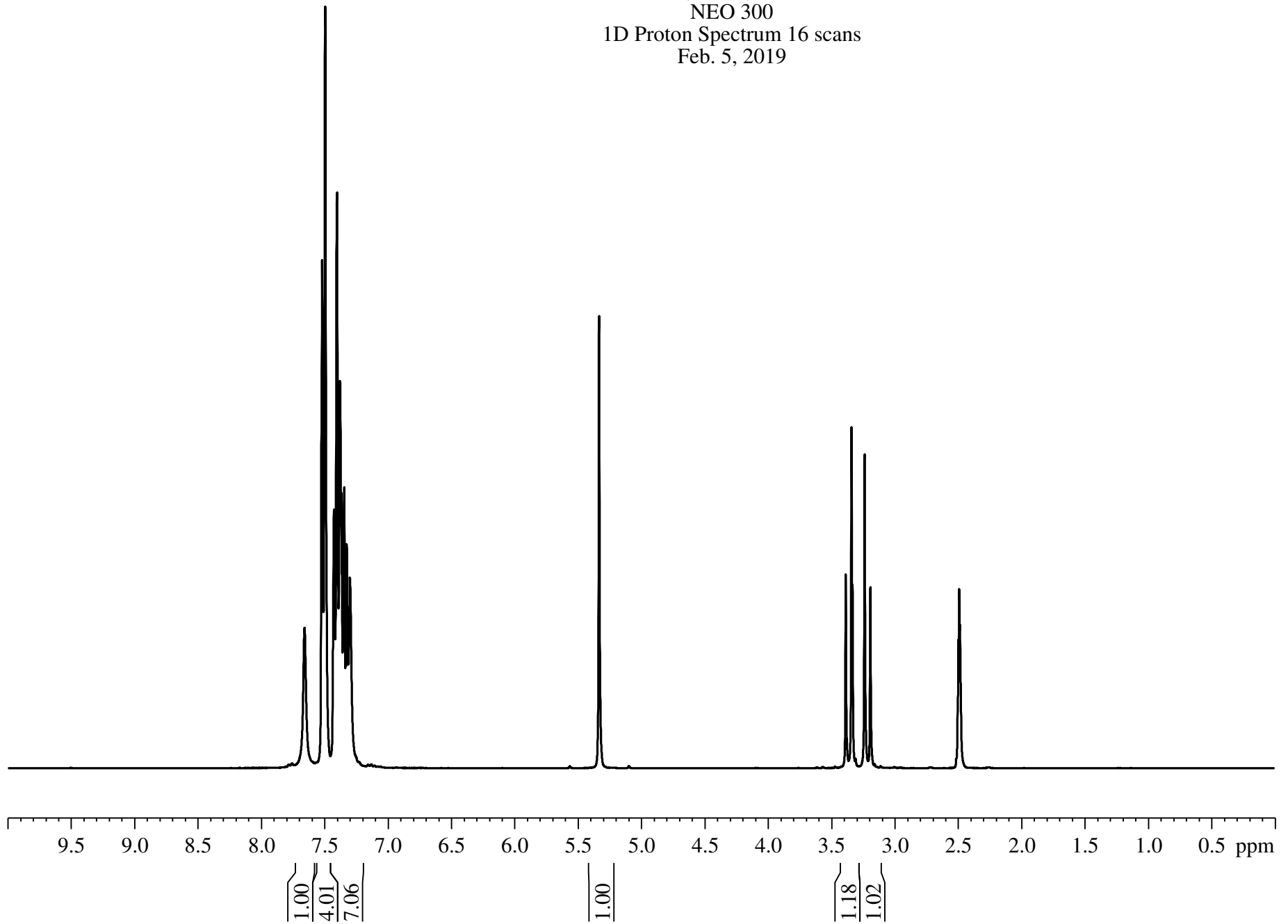
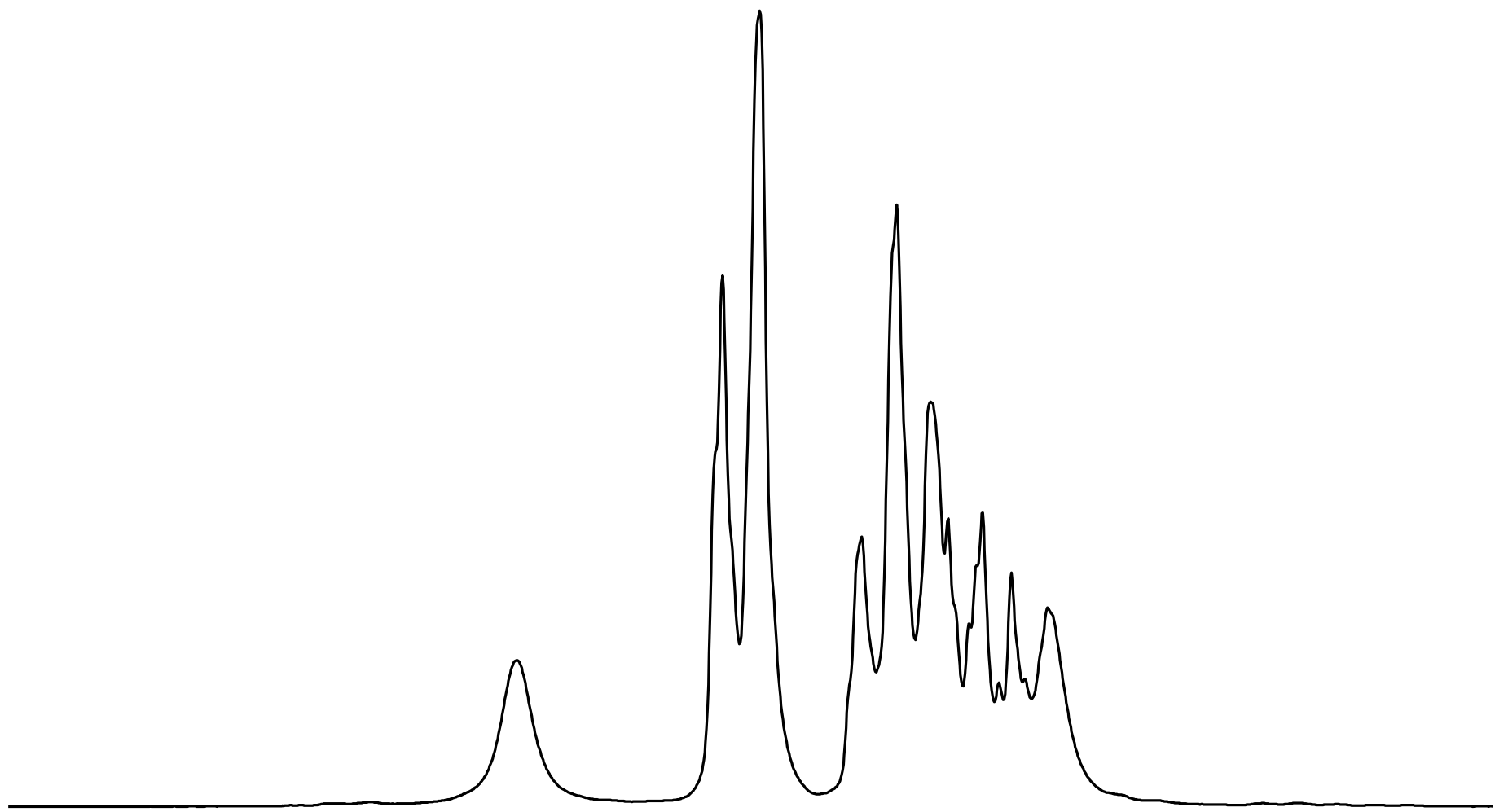


Modafinil (99%+) in DMSO-d6  
NEO 300  
1D Proton Spectrum 16 scans  
Feb. 5, 2019



Modafinil (99%+) in DMSO-d6  
NEO 300  
1D Proton Spectrum 16 scans  
Feb. 5, 2019

— 7.657  
— 7.519  
— 7.494  
7.425  
7.401  
7.379  
7.367  
7.353  
7.348  
7.344  
7.333  
7.324  
7.315  
7.300



7.95 7.90 7.85 7.80 7.75 7.70 7.65 7.60 7.55 7.50 7.45 7.40 7.35 7.30 7.25 7.20 7.15 7.10 ppm

1.00  
4.01  
7.06

Modafinil (99%+) in DMSO-d6  
NEO 300  
1D Proton Spectrum 16 scans  
Feb. 5, 2019

3.386  
3.341  
3.332  
3.237  
3.192

2.495  
2.490  
2.484

