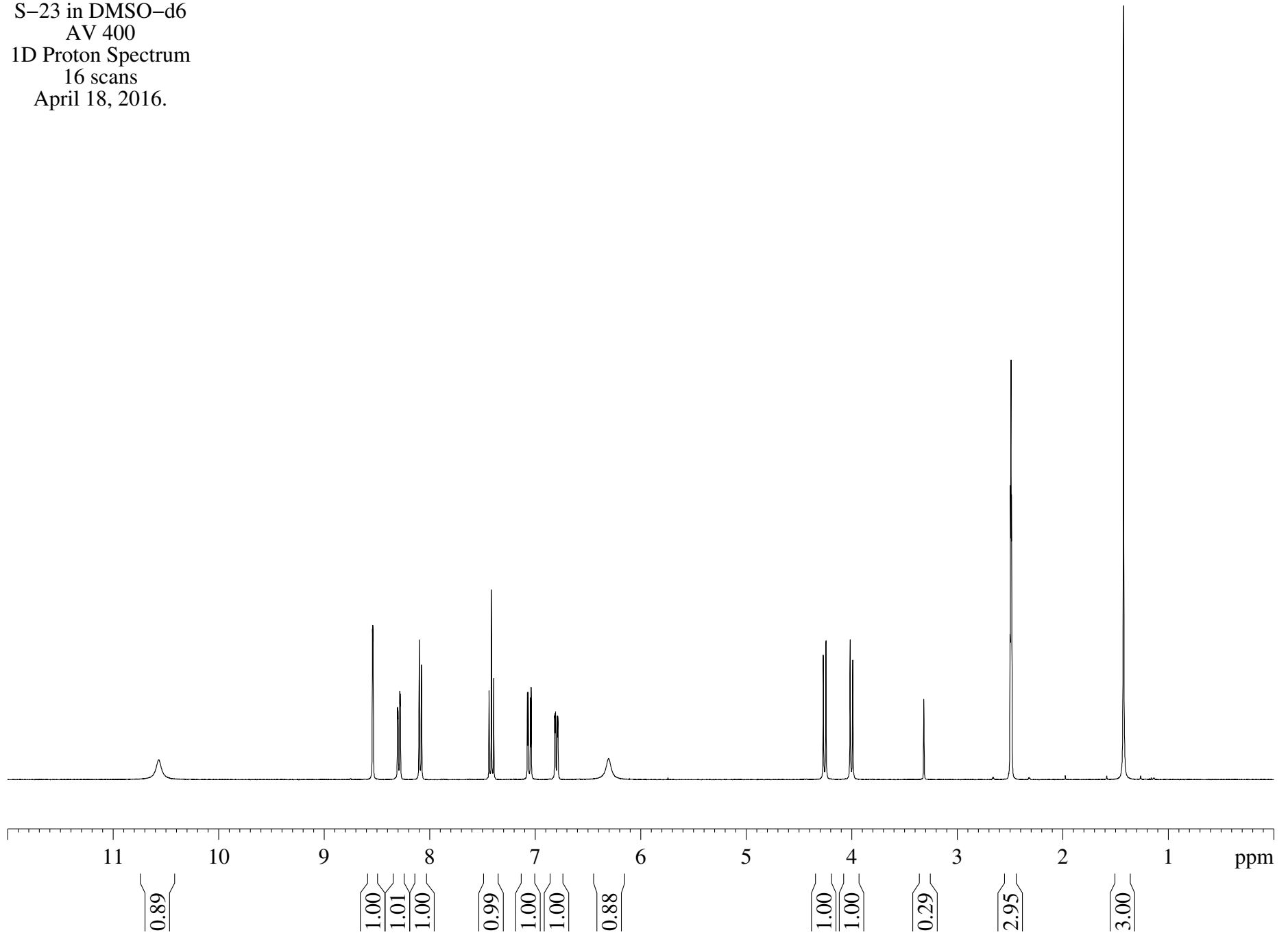


S-23 in DMSO-d6
AV 400
1D Proton Spectrum
16 scans
April 18, 2016.

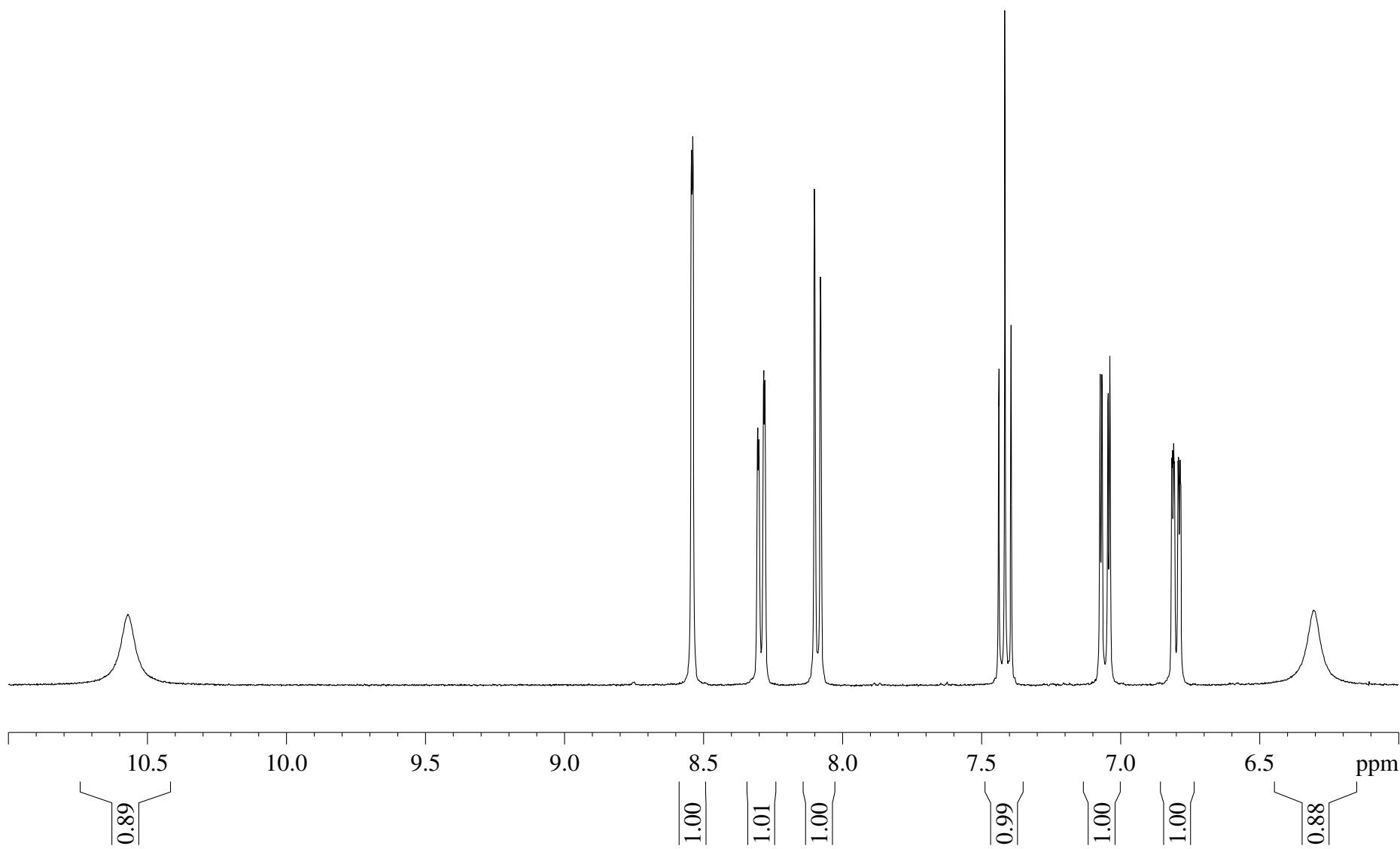


— 10.569

S-23 in DMSO-d6
AV 400
1D Proton Spectrum
16 scans
April 18, 2016.

8.542
8.538
8.305
8.300
8.284
8.279
8.100
8.079

7.438
7.416
7.393
7.074
7.067
7.045
7.038
6.816
6.813
6.808
6.807
6.793
6.791
6.786
6.305



4.269
4.245

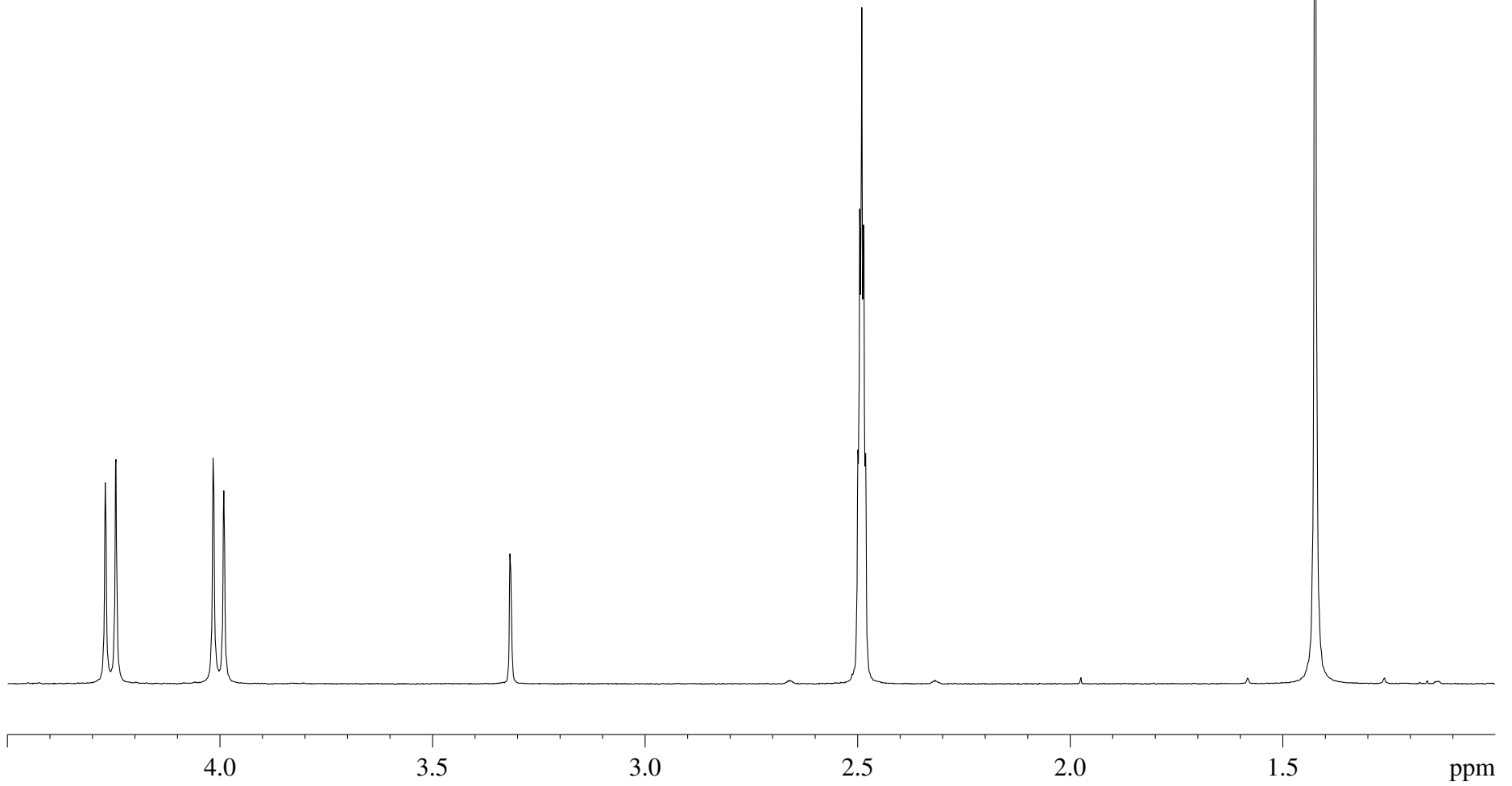
4.015
3.990

S-23 in DMSO-d6
AV 400
1D Proton Spectrum
16 scans
April 18, 2016.

3.317

2.495
2.490
2.486

1.423



1.00

1.00

0.29

2.95

3.00

ppm