

4-ethyl-13-methyl-7-phenyl-3-thia-1,8,11,12-tetraazatricyclo[8.3.0.0²]trideca-2(6),4,7,10,12-pentaene in DMSO-d₆
AV 400
1D Proton Spectrum
16 scans

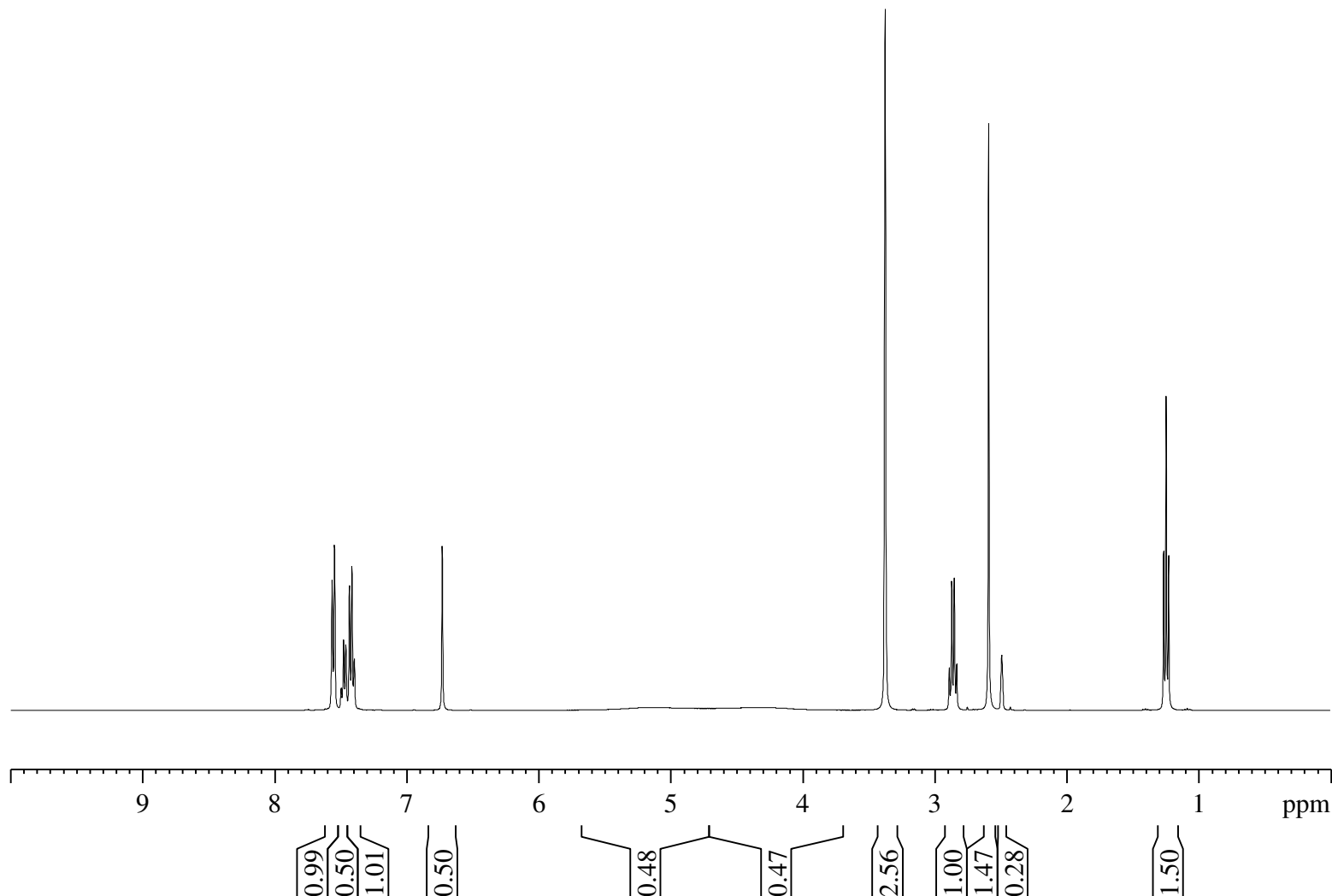


Current Data Parameters
NAME Syn052214
EXPNO 5
PROCNO 1

F2 - Acquisition Parameters
Date_ 20140522
Time 11.50
INSTRUM av400
PROBHD 5 mm PABBO BB-
PULPROG zg30
TD 32768
SOLVENT DMSO
NS 16
DS 0
SWH 8278.146 Hz
FIDRES 0.252629 Hz
AQ 1.9791873 sec
RG 161.3
DW 60.400 usec
DE 6.00 usec
TE 294.1 K
D1 2.5000000 sec
TD0 1

==== CHANNEL f1 =====
NUC1 1H
P1 9.80 usec
PL1 0 dB
PL1W 9.04279137 W
SFO1 400.1324710 MHz

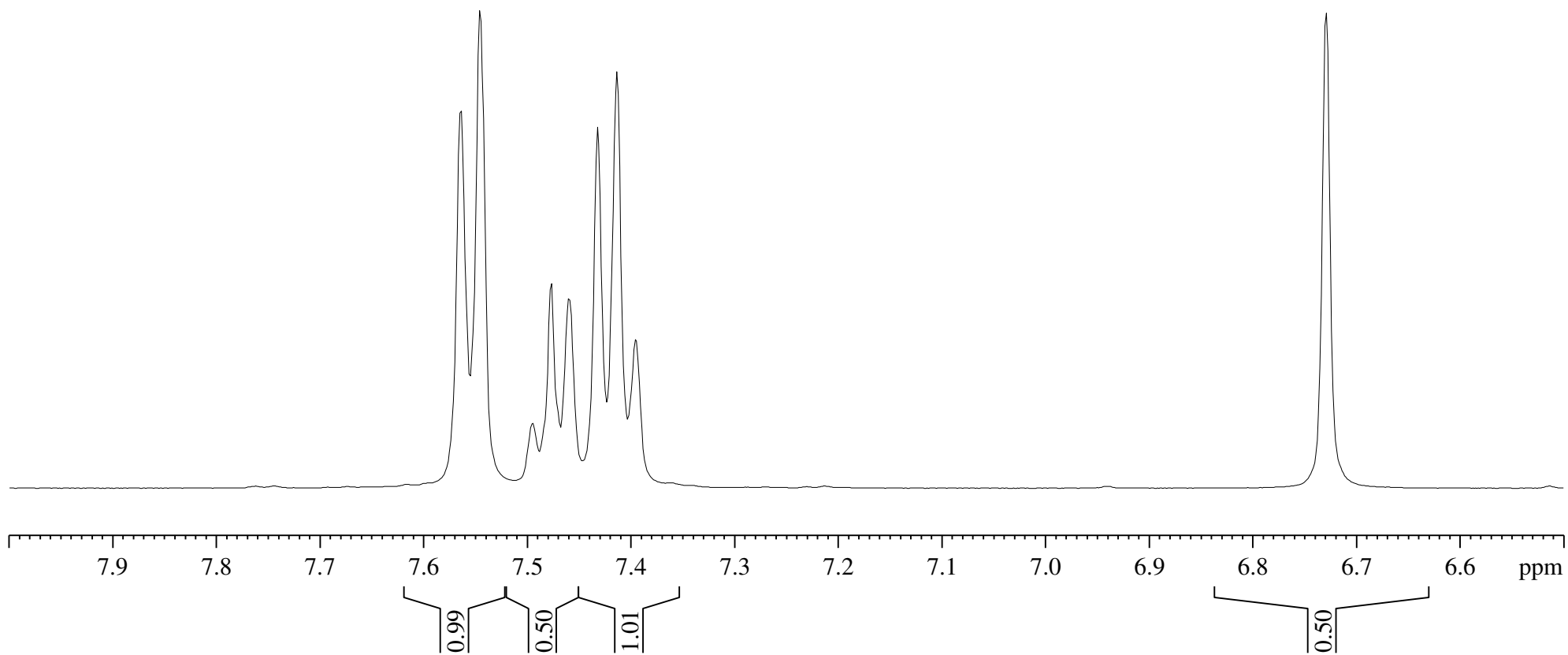
F2 - Processing parameters
SI 16384
SF 400.1300066 MHz
WDW EM
SSB 0
LB 0.30 Hz
GB 0
PC 1.00



4-ethyl-13-methyl-7-phenyl-3-thia-1,8,11,12-tetraazatricyclo[8.3.0.0.02]trideca-2(6),4,7,10,12-pentaene in DMSO-d6
AV 400
1D Proton Spectrum
16 scans

7.564
7.546
7.477
7.460
7.432
7.414
7.395

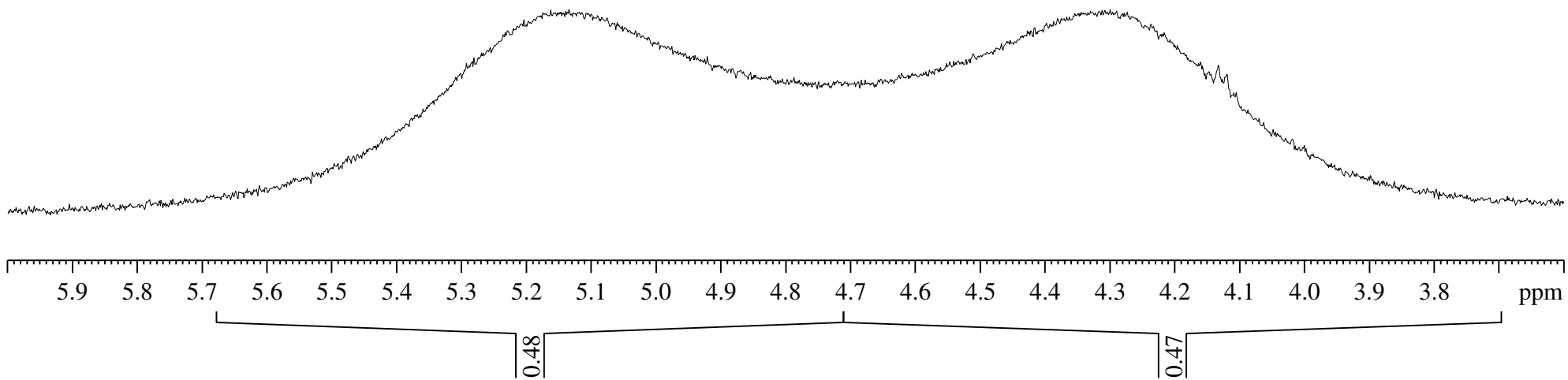
6.729



4-ethyl-13-methyl-7-phenyl-3-thia-1,8,11,12-tetraazatricyclo[8.3.0.0²]trideca-2(6),4,7,10,12-pentaene in DMSO-d₆
AV 400
1D Proton Spectrum
16 scans

— 5.142

— 4.301



4-ethyl-13-methyl-7-phenyl-3-thia-1,8,11,12-tetraazatricyclo[8.3.0.0.2]trideca-2(6),4,7,10,12-pentaene in DMSO-d6
AV 400
1D Proton Spectrum
16 scans

