

Ephinazone in CDCl3
AV 400
1D Proton Spectrum
16 scans
May 22, 2014.

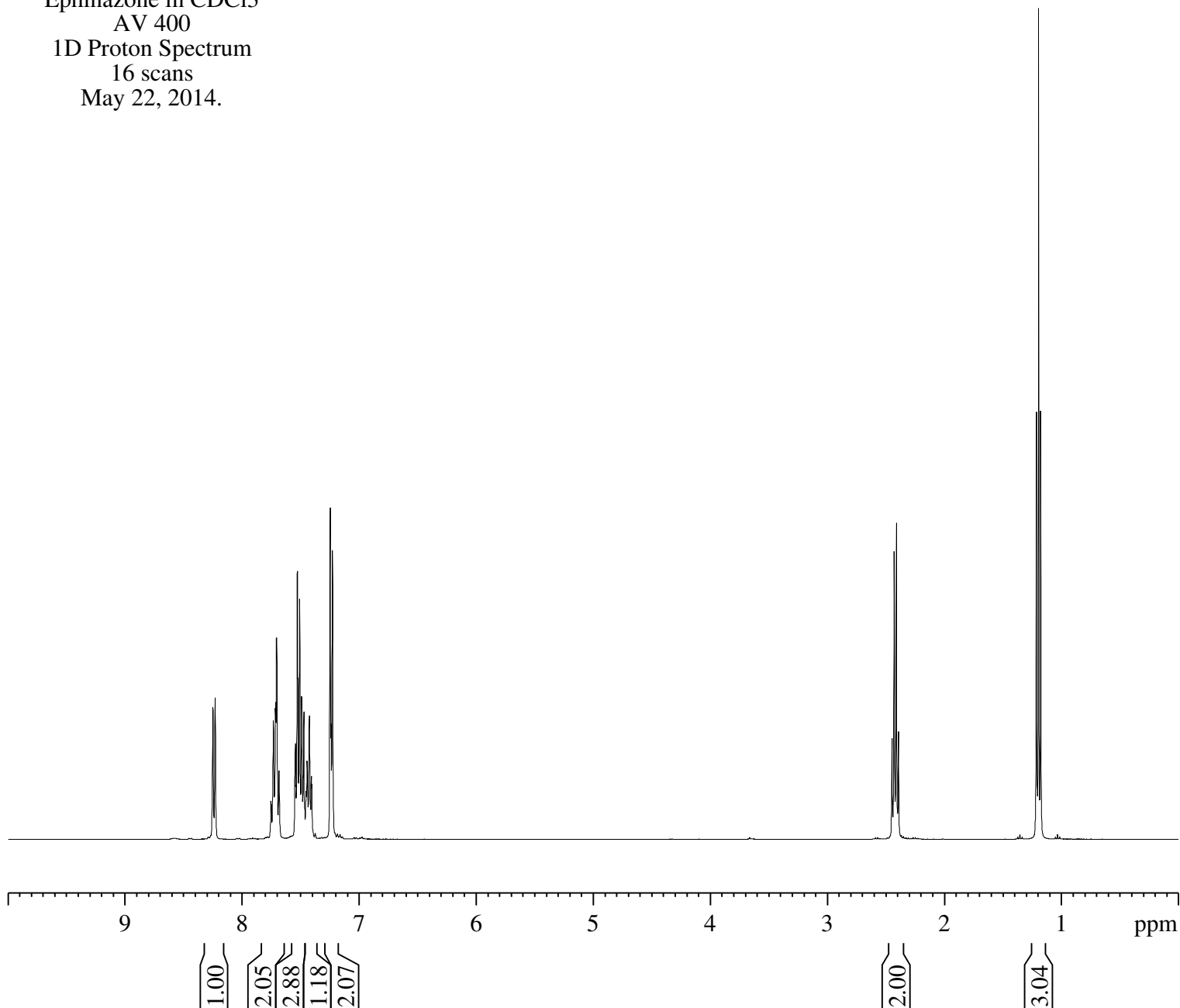


Current Data Parameters
NAME Syn052214
EXPNO 15
PROCNO 1

F2 - Acquisition Parameters
Date_ 20140522
Time 12.30
INSTRUM av400
PROBHD 5 mm PABBO BB-
PULPROG zg30
TD 32768
SOLVENT CDCl3
NS 16
DS 0
SWH 8278.146 Hz
FIDRES 0.252629 Hz
AQ 1.9791873 sec
RG 71.8
DW 60.400 usec
DE 6.00 usec
TE 294.1 K
D1 2.50000000 sec
TD0 1

===== CHANNEL f1 =====
NUC1 1H
P1 9.80 usec
PL1 0 dB
PL1W 9.04279137 W
SFO1 400.1324710 MHz

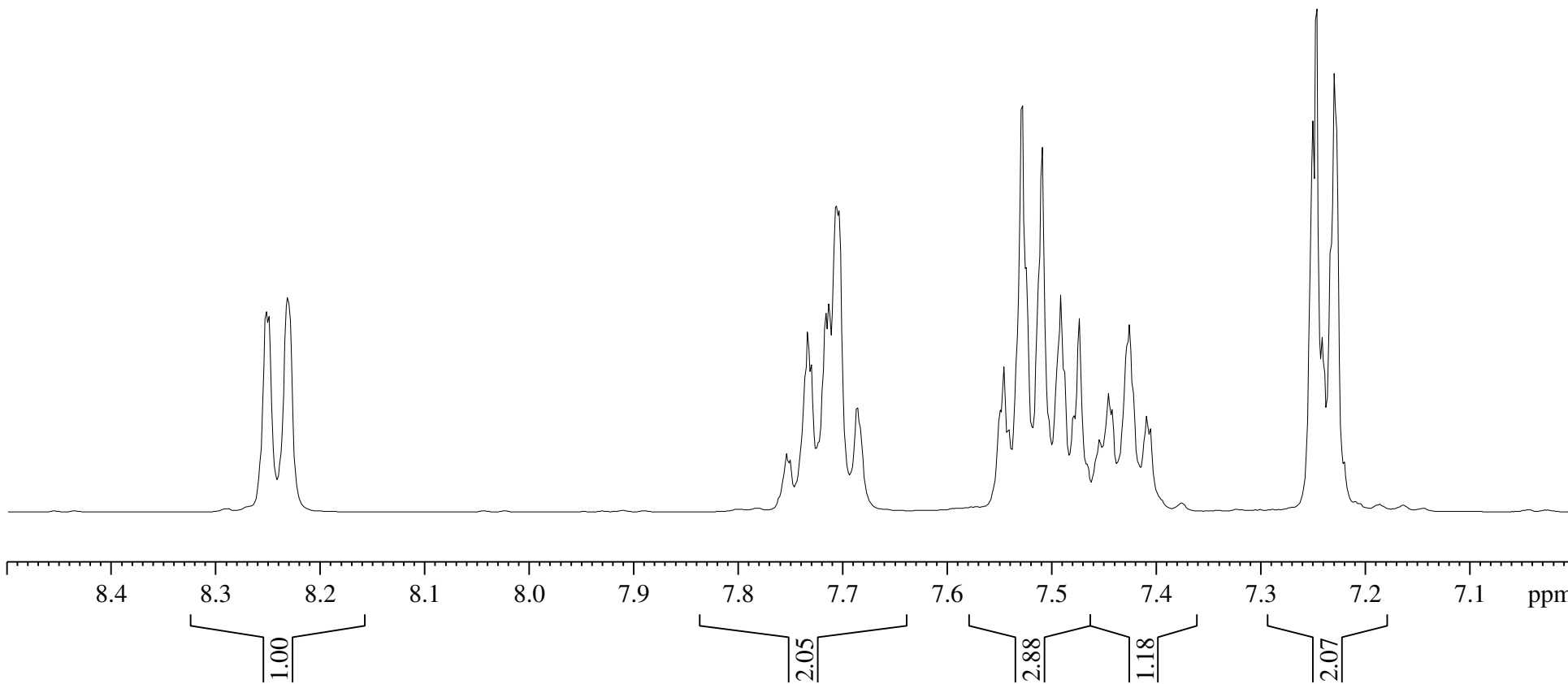
F2 - Processing parameters
SI 16384
SF 400.1300174 MHz
WDW EM
SSB 0
LB 0.30 Hz
GB 0
PC 1.00



Ephinazone in CDCl₃
AV 400
1D Proton Spectrum
16 scans
May 22, 2014.

8.252
8.249
8.231

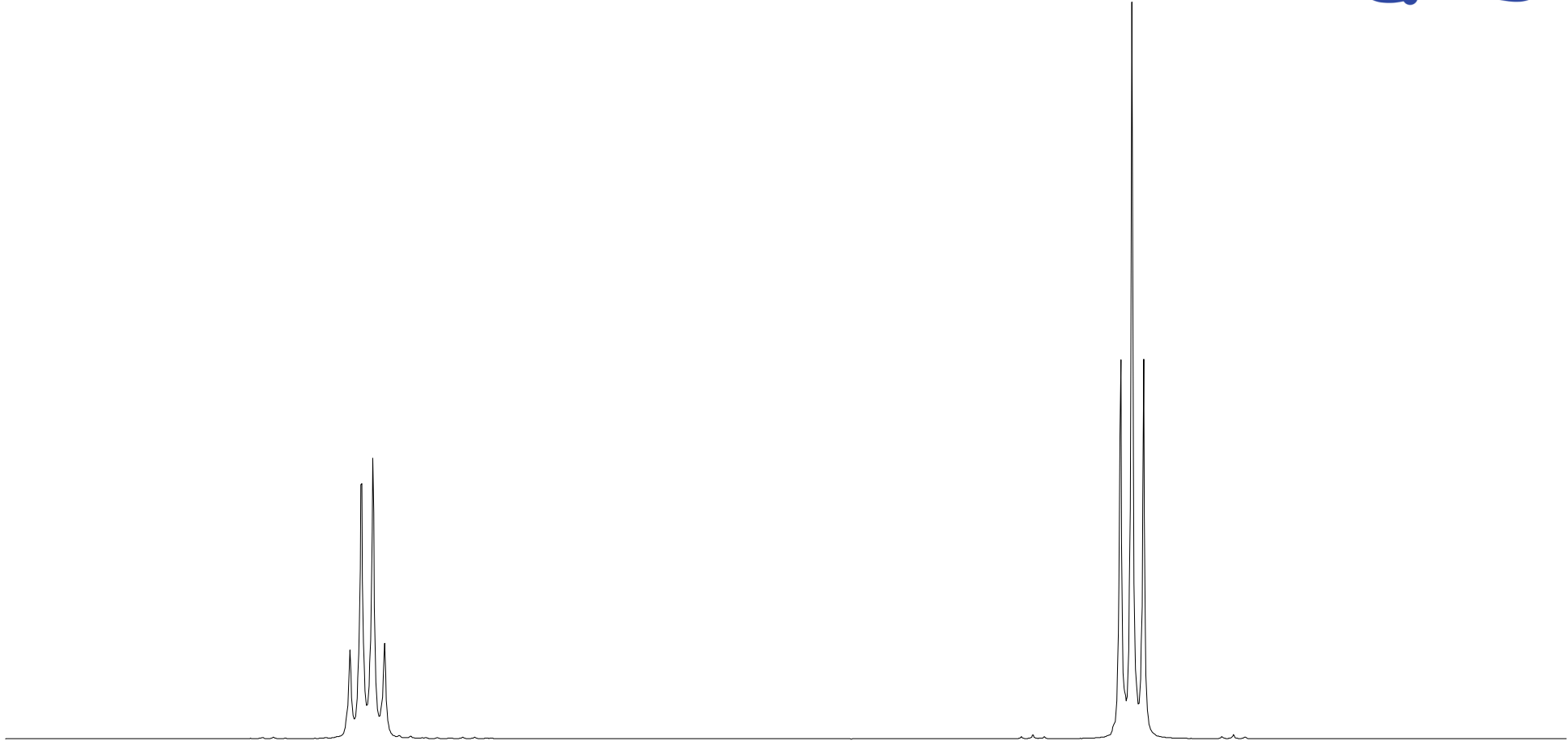
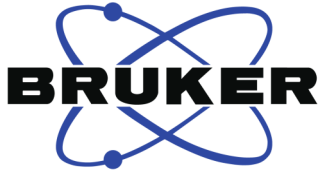
7.734
7.730
7.716
7.713
7.707
7.704
7.686
7.549
7.546
7.541
7.529
7.525
7.509
7.491
7.479
7.474
7.446
7.443
7.426
7.409
7.406
7.250
7.247
7.241
7.230



2.430
2.411

Ephinazone in CDCl₃
AV 400
1D Proton Spectrum
16 scans
May 22, 2014.

1.215
1.178



2.9 2.8 2.7 2.6 2.5 2.4 2.3 2.2 2.1 2.0 1.9 1.8 1.7 1.6 1.5 1.4 1.3 1.2 1.1 1.0 0.9 0.8 0.7 ppm

2.00

3.04