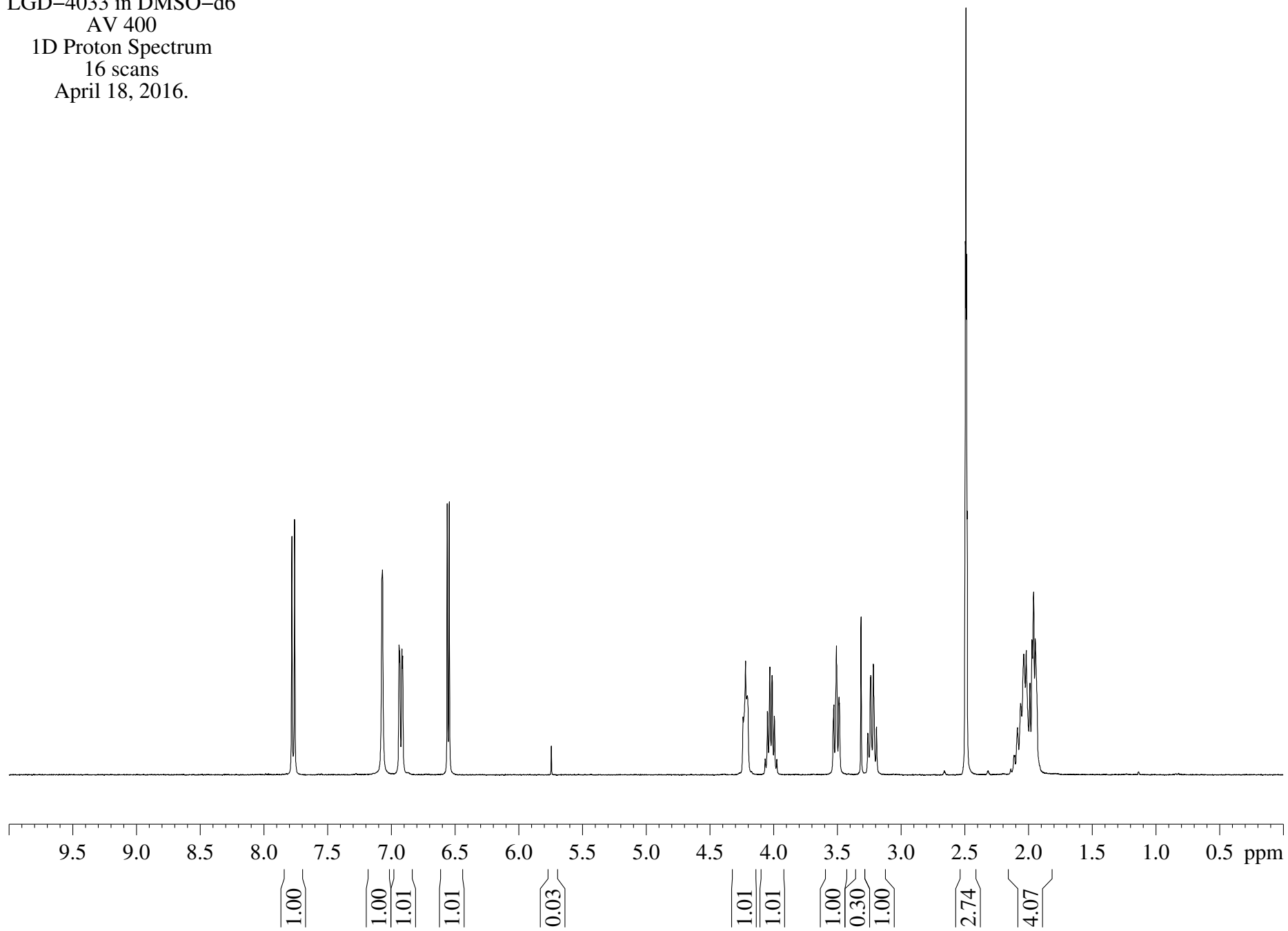


LGD-4033 in DMSO-d6
AV 400
1D Proton Spectrum
16 scans
April 18, 2016.



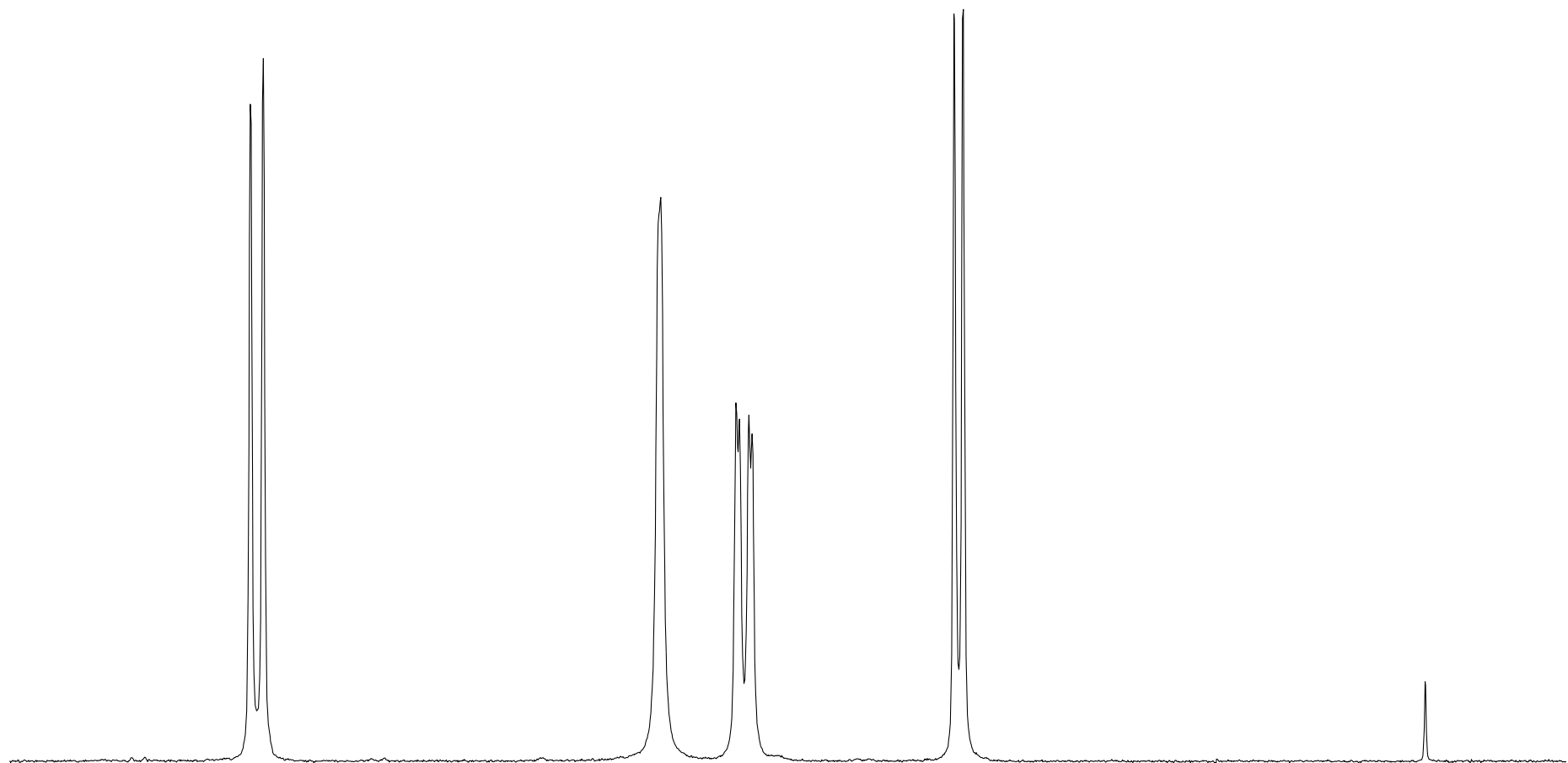
7.782
7.760

LGD-4033 in DMSO-d6
AV 400
1D Proton Spectrum
16 scans
April 18, 2016.

7.070
6.939
6.934
6.917
6.912

6.562
6.546

5.745



8.1 8.0 7.9 7.8 7.7 7.6 7.5 7.4 7.3 7.2 7.1 7.0 6.9 6.8 6.7 6.6 6.5 6.4 6.3 6.2 6.1 6.0 5.9 5.8 5.7 ppm

1.00

1.00

1.01

1.01

0.03

LGD-4033 in DMSO-d6
AV 400
1D Proton Spectrum
16 scans
April 18, 2016.

