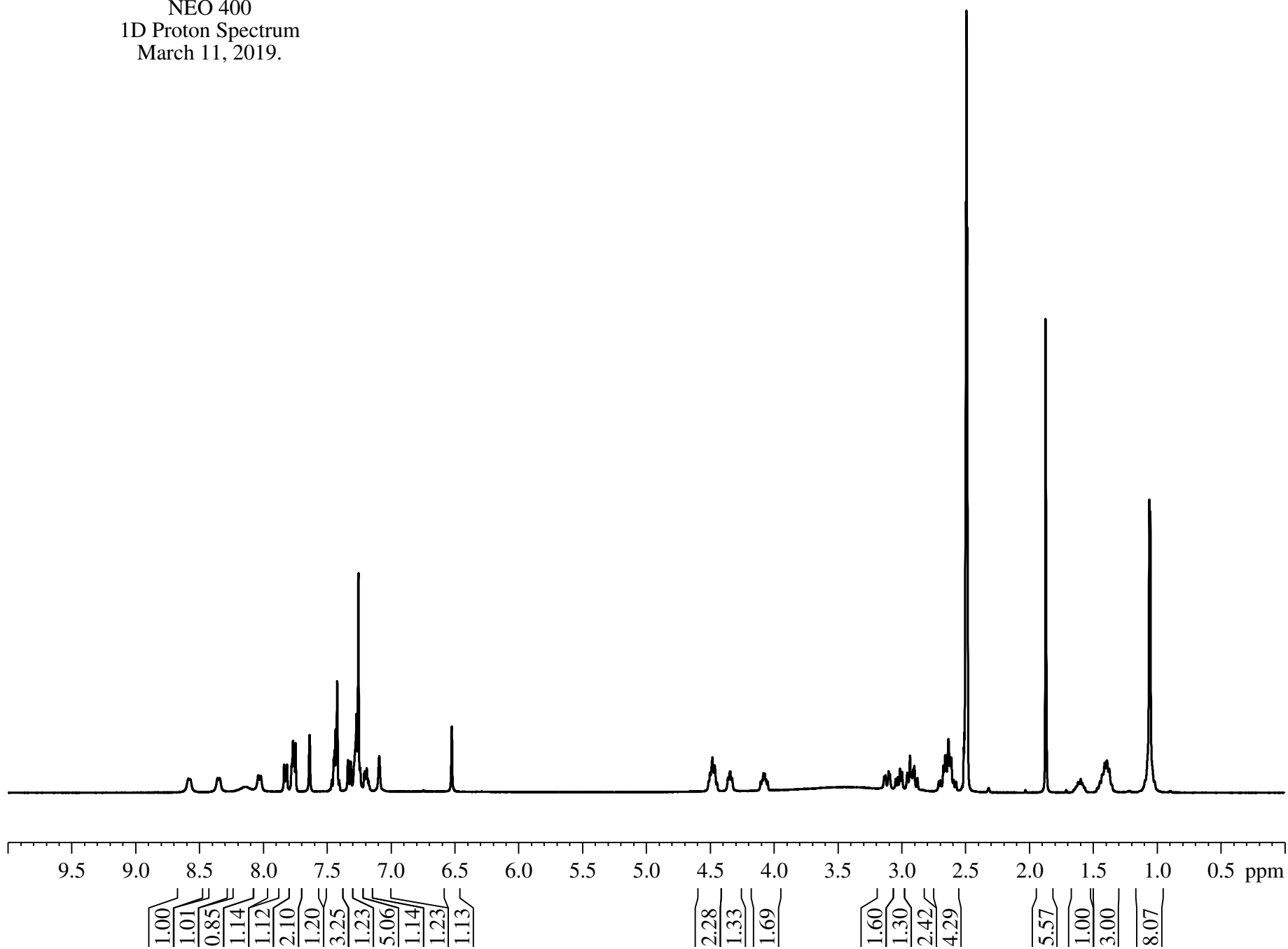
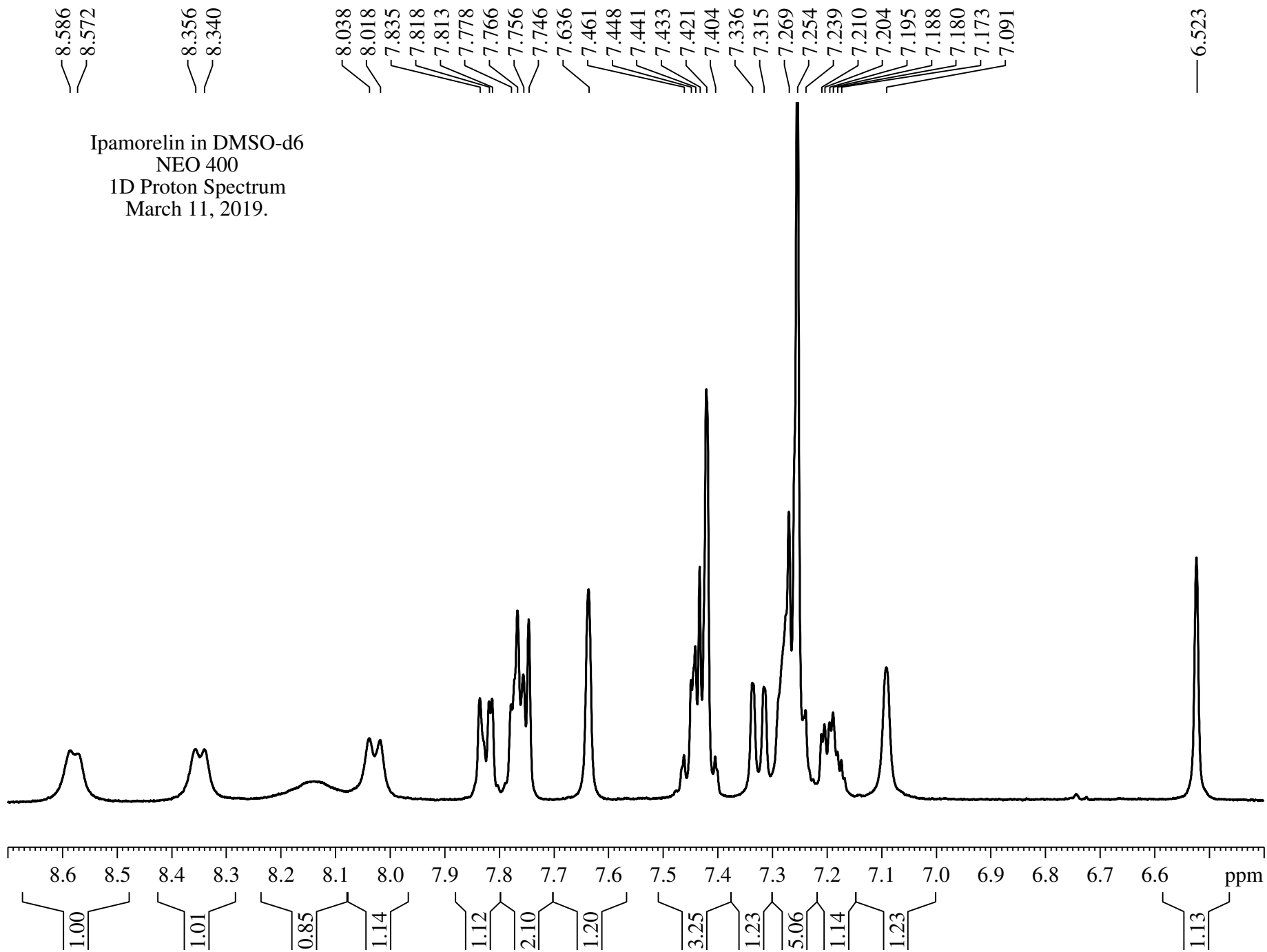


Ipamorelin in DMSO-d6  
NEO 400  
1D Proton Spectrum  
March 11, 2019.



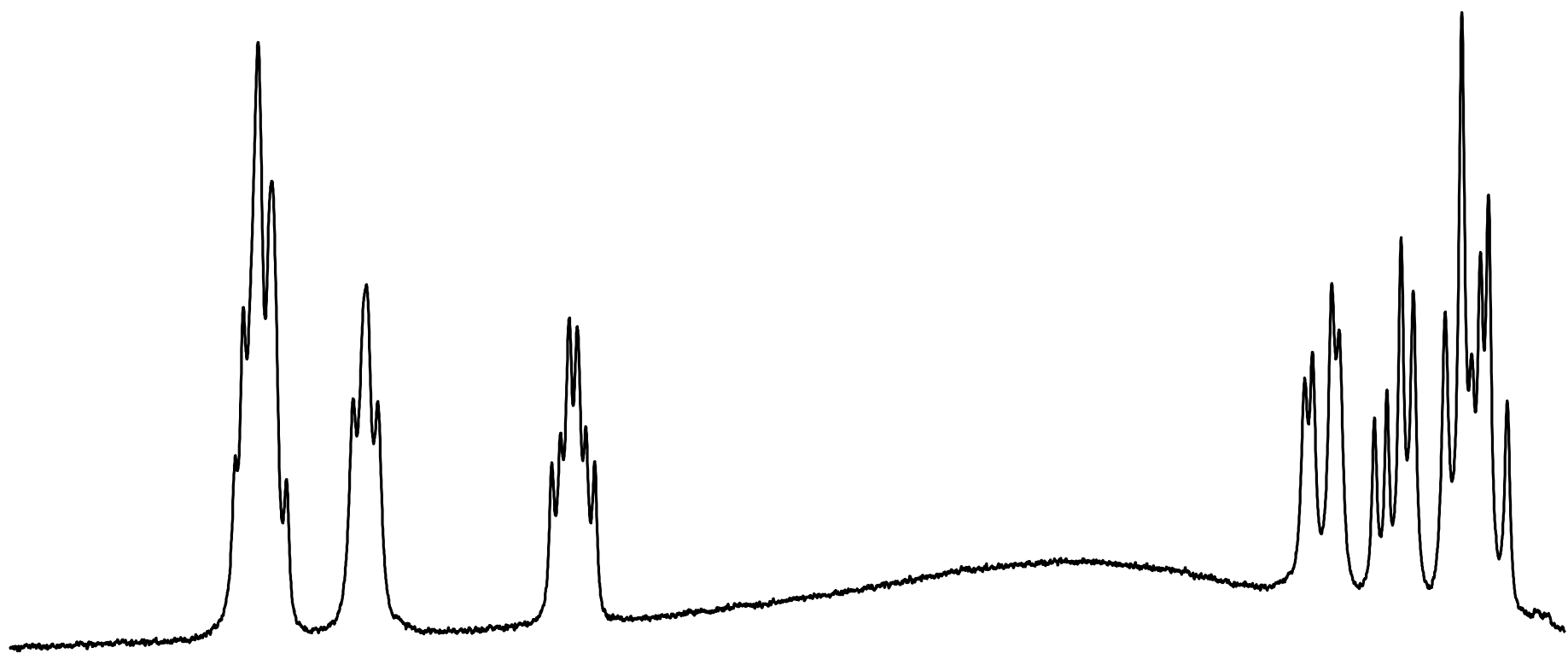


4.510  
4.500  
4.481  
4.463  
4.359  
4.341  
4.327

4.103  
4.092  
4.080  
4.070  
4.059  
4.048

3.135  
3.125  
3.100  
3.091  
3.029  
3.011  
2.995  
2.954  
2.933  
2.920  
2.909

Ipamorelin in DMSO-d6  
NEO 400  
1D Proton Spectrum  
March 11, 2019.



4.7 4.6 4.5 4.4 4.3 4.2 4.1 4.0 3.9 3.8 3.7 3.6 3.5 3.4 3.3 3.2 3.1 3.0 2.9 ppm

2.28

1.33

1.69

1.60

1.30

2.42

