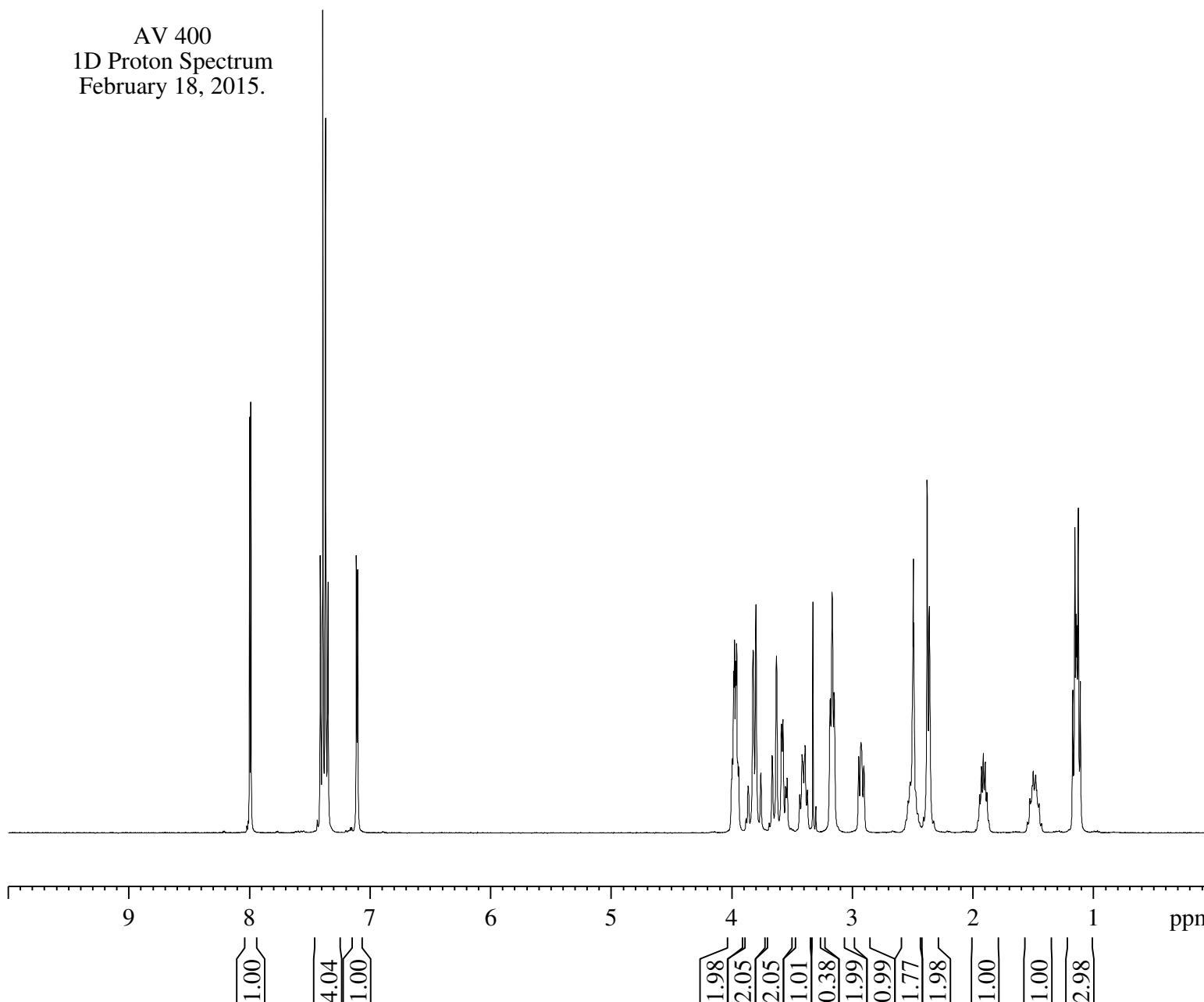


SR9009 in DMSO-d6

AV 400  
1D Proton Spectrum  
February 18, 2015.



Current Data Parameters

NAME S-SR9009  
EXPNO 1  
PROCNO 1

F2 - Acquisition Parameters

Date\_ 20150218  
Time 9.49  
INSTRUM av400  
PROBHD 5 mm PABBO BB-  
PULPROG zg30  
TD 32768  
SOLVENT DMSO  
NS 16  
DS 0  
SWH 8278.146 Hz  
FIDRES 0.252629 Hz  
AQ 1.9791873 sec  
RG 256  
DW 60.400 usec  
DE 6.00 usec  
TE 294.6 K  
D1 2.50000000 sec  
TD0 1

===== CHANNEL f1 =====

NUC1 1H  
P1 9.80 usec  
PL1 0 dB  
PL1W 9.04279137 W  
SFO1 400.1324710 MHz

F2 - Processing parameters

SI 16384  
SF 400.1300066 MHz  
WDW EM  
SSB 0  
LB 0.30 Hz  
GB 0  
PC 1.00

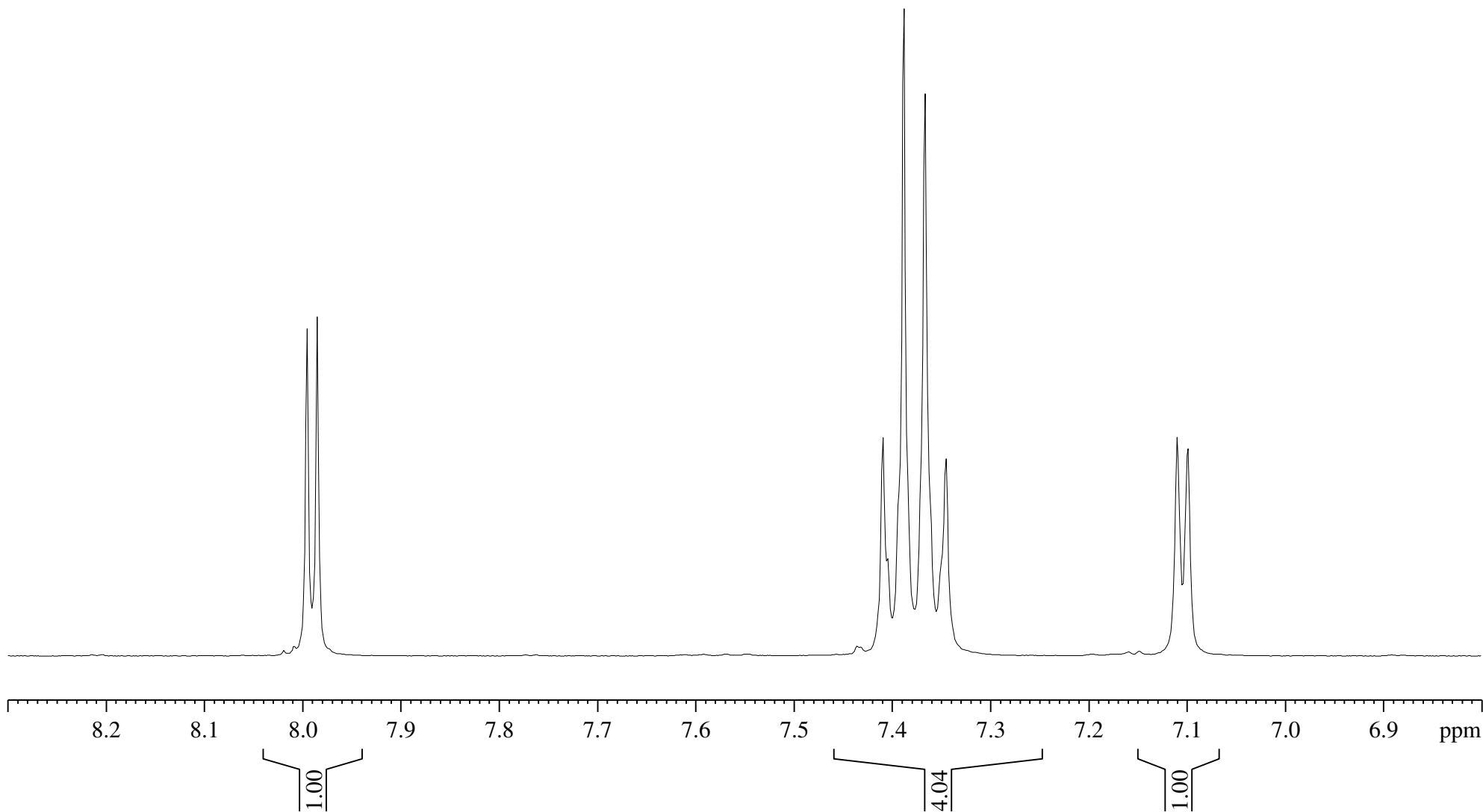
SR9009 in DMSO-d6

AV 400  
1D Proton Spectrum  
February 18, 2015.

7.996  
7.985

7.410  
7.405  
7.389  
7.367  
7.346

7.110  
7.100



3.948  
3.939  
3.860  
3.819  
3.796  
3.755  
3.661  
3.625  
3.584  
3.571  
3.550  
3.537  
3.432  
3.413  
3.388  
3.369  
3.323  
3.299  
3.179  
3.163  
3.148  
2.943  
2.924  
2.900  
2.534  
2.516  
2.499  
2.494  
2.490  
2.485  
2.375  
2.358

1.940  
1.925  
1.910  
1.894  
1.879

1.524  
1.515  
1.495  
1.475  
1.467  
1.447

1.168  
1.150  
1.140  
1.133  
1.122  
1.104

SR9009 in DMSO-d6

AV 400  
1D Proton Spectrum  
February 18, 2015.

