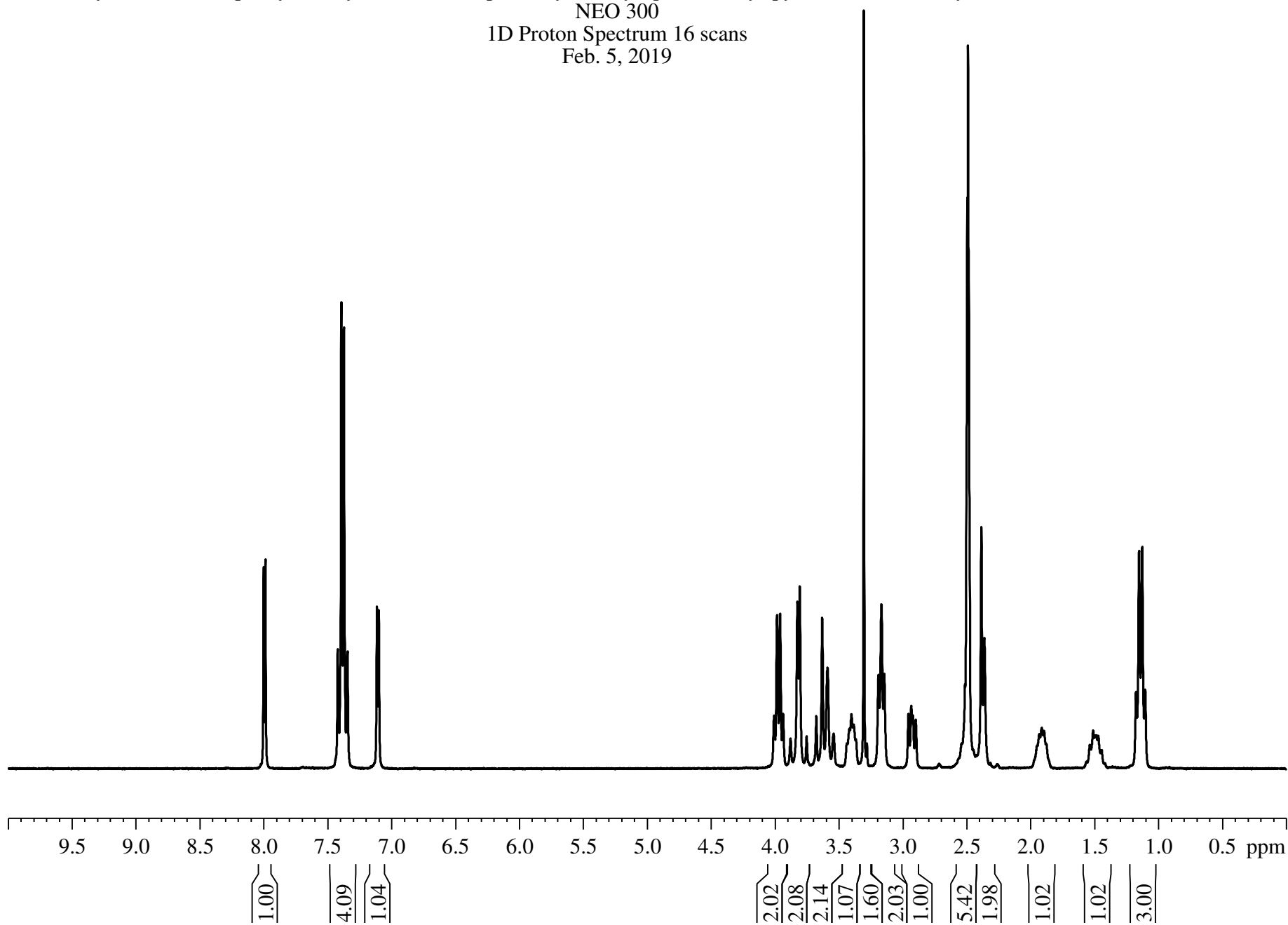


Ethyl-3-[[4-chlorophenyl)methyl]-[(5-nitrothiophen-2-yl)methyl]qminomethyl]pyrrolidine-1-carboxylate #005 in DMSO-d6
NEO 300
1D Proton Spectrum 16 scans
Feb. 5, 2019

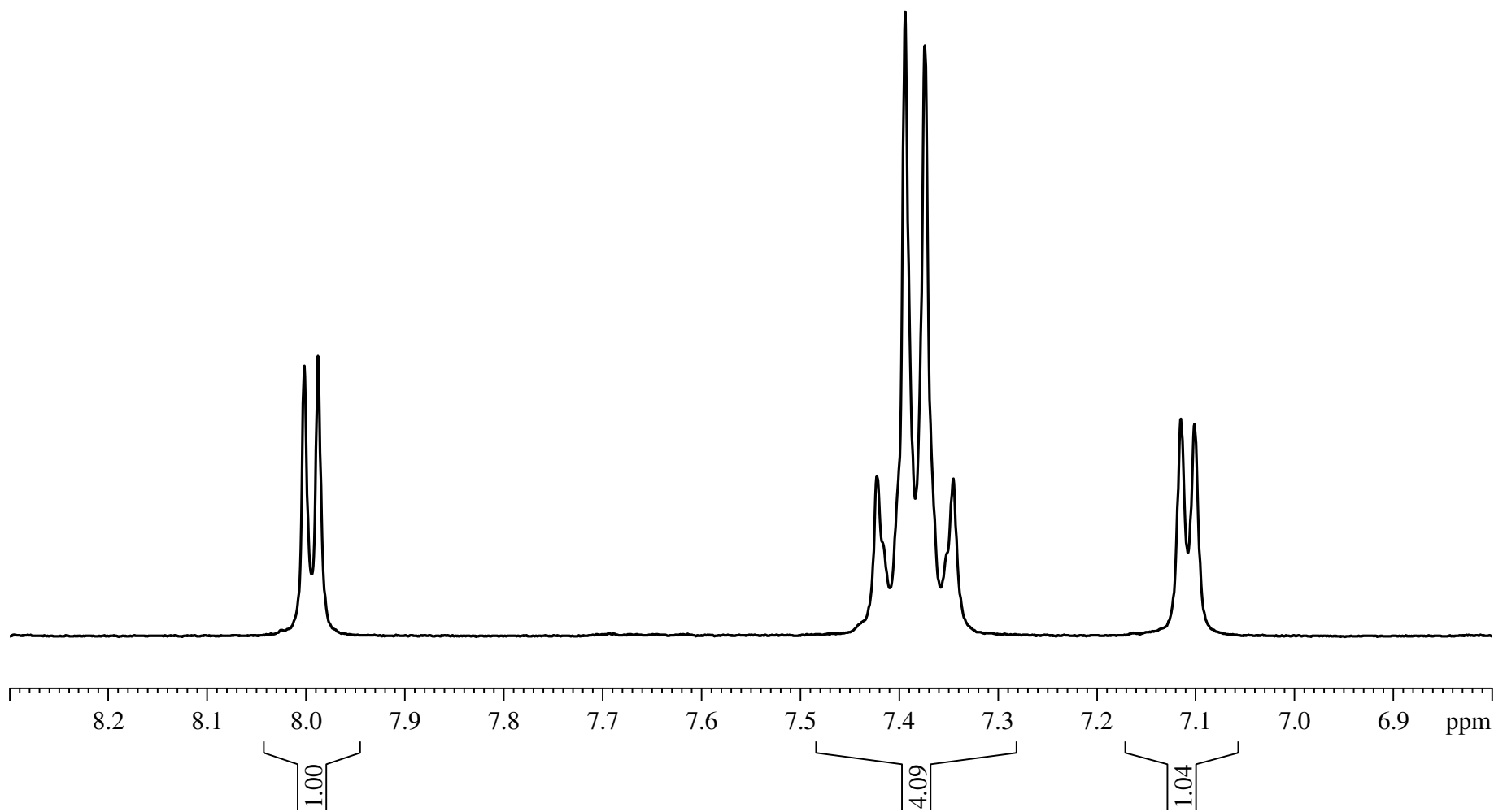


8.002
7.988

7.422
7.394
7.374
7.345

7.115
7.101

Ethyl-3-[[4-chlorophenyl)methyl]-[(5-nitrothiophen-2-yl)methyl]quinomethyl]pyrrolidine-1-carboxylate #005 in DMSO-d6
NEO 300
1D Proton Spectrum 16 scans
Feb. 5, 2019



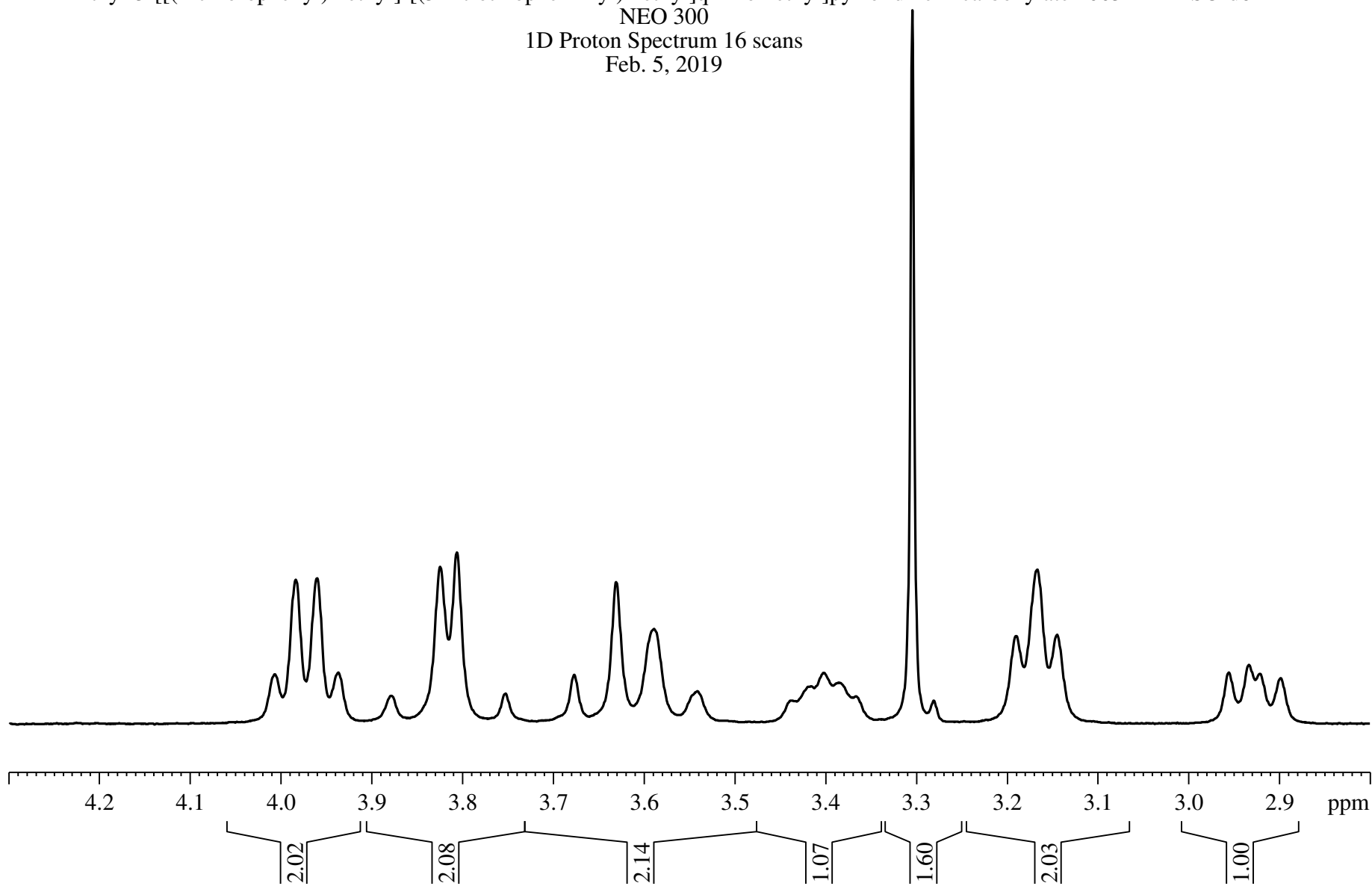
4.007
3.984
3.960
3.937
3.879
3.825
3.806
3.753
3.677
3.631
3.589
3.542
3.438
3.417
3.402
3.386
3.367
3.305
3.281
3.190
3.167
3.145
2.956
2.934
2.922
2.899

Ethyl-3-[[[4-chlorophenyl)methyl]-[(5-nitrothiophen-2-yl)methyl]quinomethyl]pyrrolidine-1-carboxylate #005 in DMSO-d6

NEO 300

1D Proton Spectrum 16 scans

Feb. 5, 2019



2.513
2.495
2.490
2.484
2.386
2.362

1.932
1.913
1.896

1.537
1.510
1.497
1.487
1.472
1.446

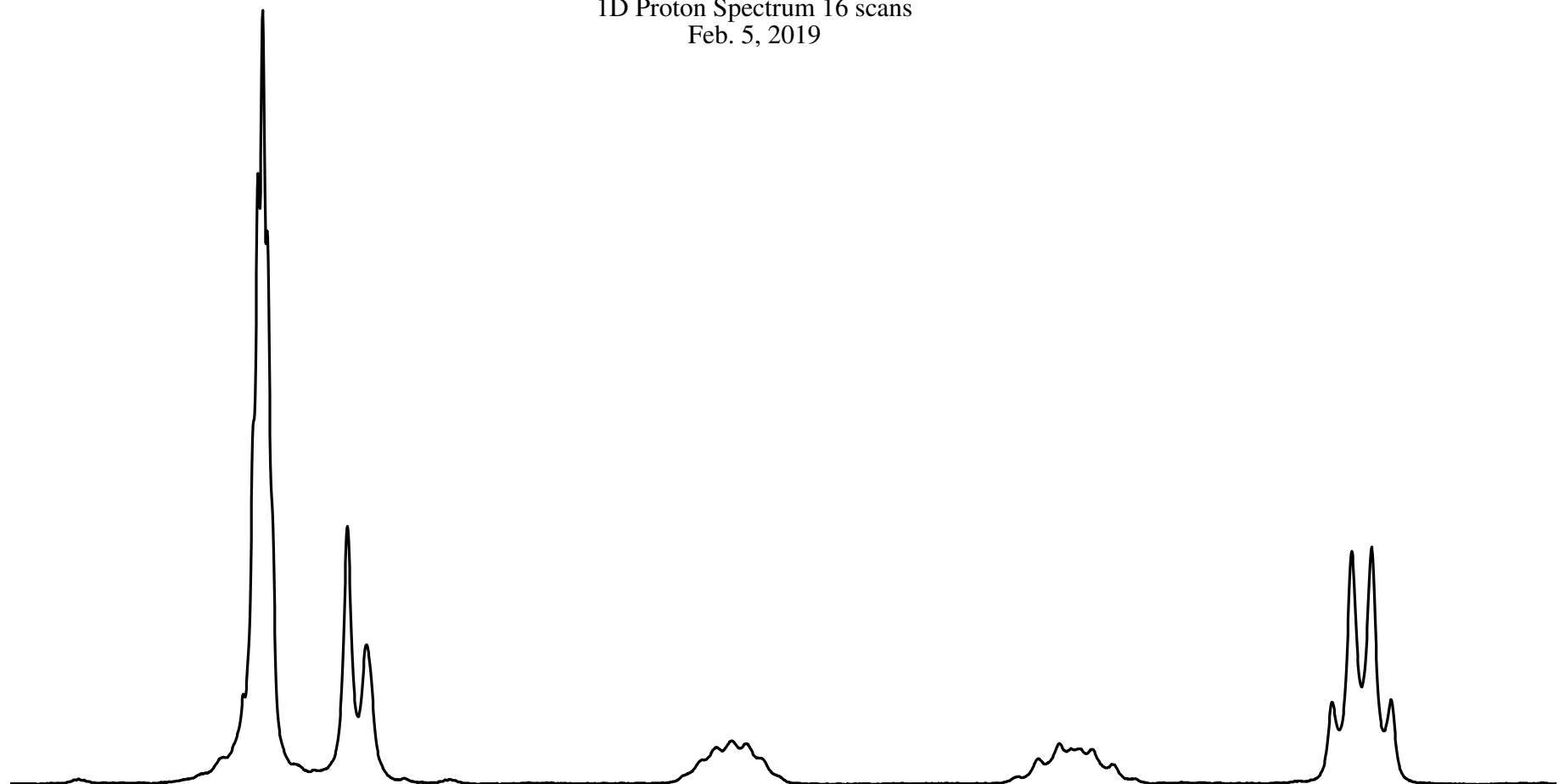
1.176
1.151
1.127
1.103

Ethyl-3-[[4-chlorophenyl)methyl]-[(5-nitrothiophen-2-yl)methyl]quinomethyl]pyrrolidine-1-carboxylate #005 in DMSO-d6

NEO 300

1D Proton Spectrum 16 scans

Feb. 5, 2019



2.7 2.6 2.5 2.4 2.3 2.2 2.1 2.0 1.9 1.8 1.7 1.6 1.5 1.4 1.3 1.2 1.1 1.0 ppm

5.42
1.98

1.02

1.02

3.00