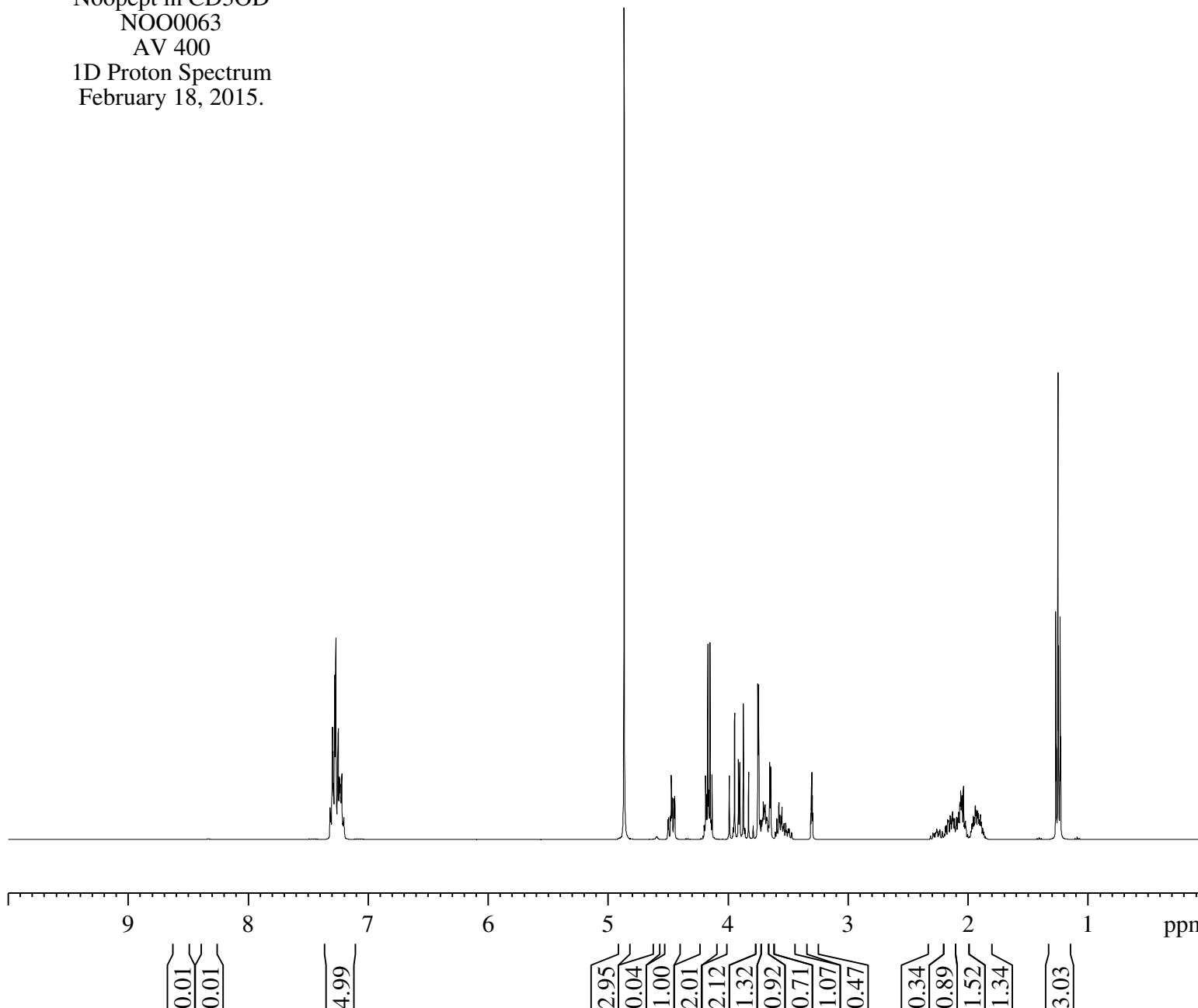


Noopept in CD3OD
 NOO0063
 AV 400
 1D Proton Spectrum
 February 18, 2015.



Current Data Parameters
 NAME S-Noopept
 EXPNO 1
 PROCNO 1

F2 - Acquisition Parameters
 Date_ 20150218
 Time 9.37
 INSTRUM av400
 PROBHD 5 mm PABBO BB-
 PULPROG zg30
 TD 32768
 SOLVENT MeOD
 NS 16
 DS 0
 SWH 8278.146 Hz
 FIDRES 0.252629 Hz
 AQ 1.9791873 sec
 RG 90.5
 DW 60.400 usec
 DE 6.00 usec
 TE 294.5 K
 D1 2.50000000 sec
 TD0 1

===== CHANNEL f1 =====
 NUC1 1H
 P1 9.80 usec
 PL1 0 dB
 PL1W 9.04279137 W
 SFO1 400.1324710 MHz

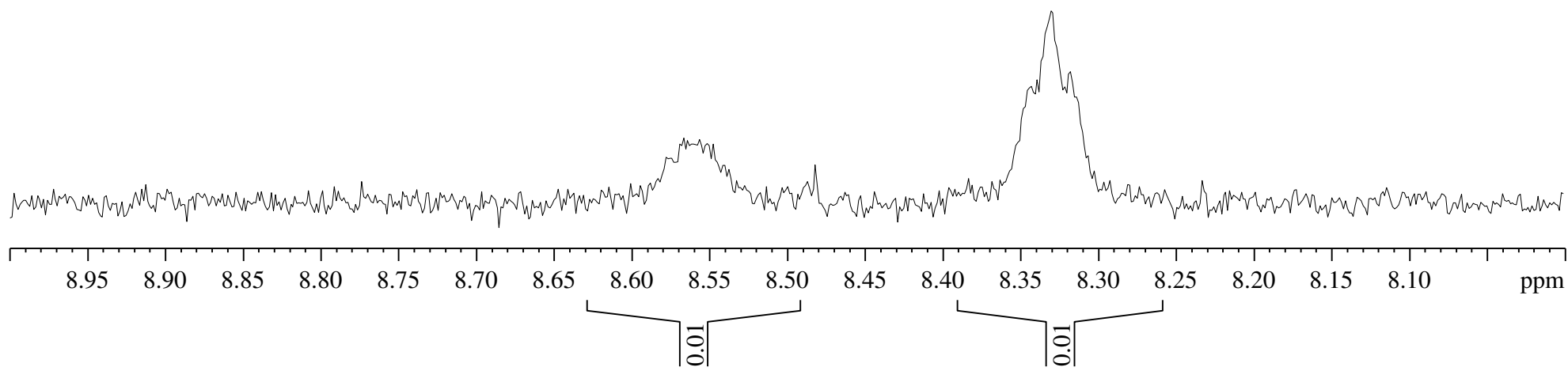
F2 - Processing parameters
 SI 16384
 SF 400.1300114 MHz
 WDW EM
 SSB 0
 LB 0.30 Hz
 GB 0
 PC 1.00

Noopept in CD3OD
NOO0063
AV 400
1D Proton Spectrum
February 18, 2015.

— 8.567

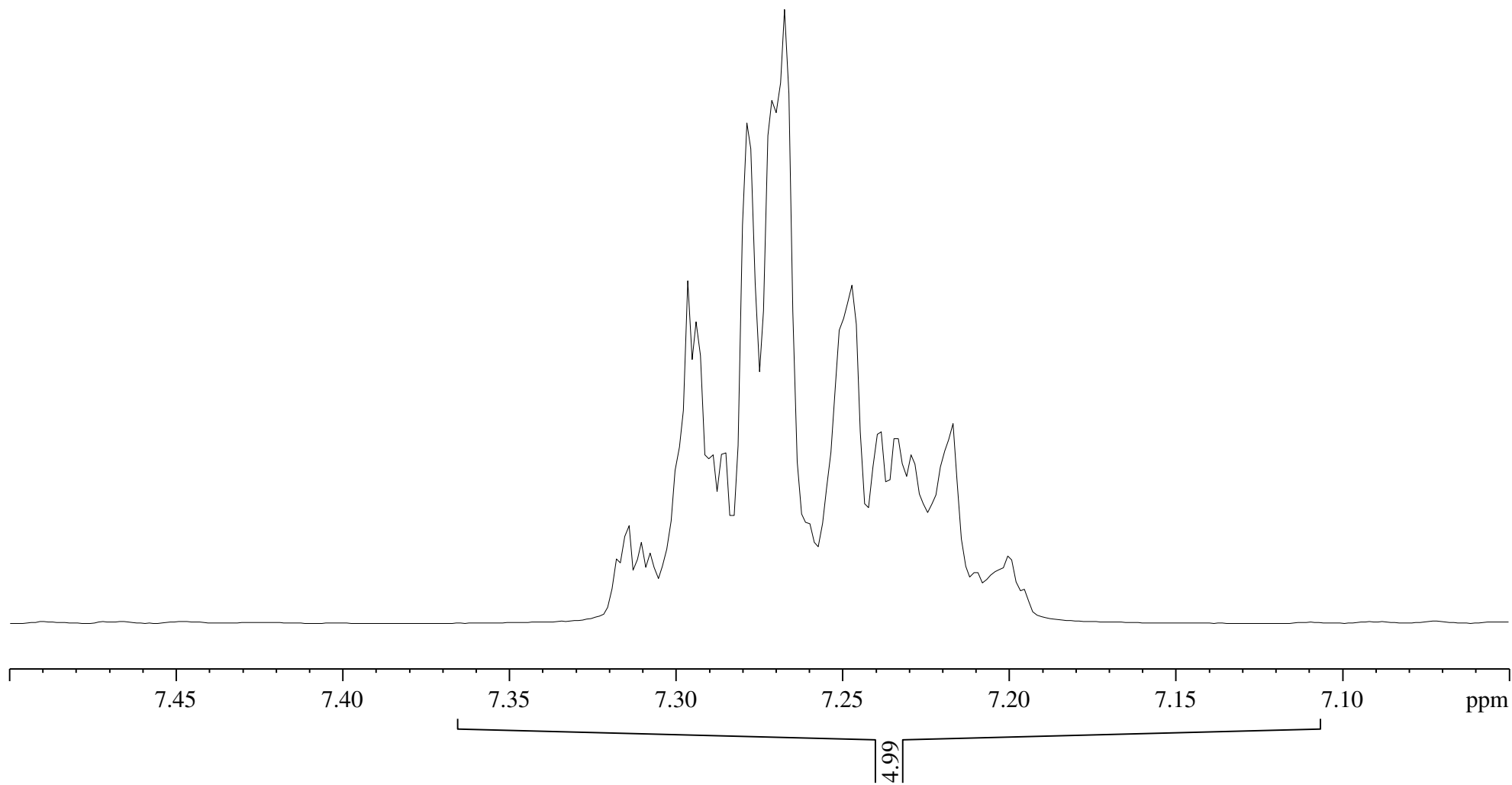
— 8.482

— 8.330



Noopept in CD3OD
NOO0063
AV 400
1D Proton Spectrum
February 18, 2015.

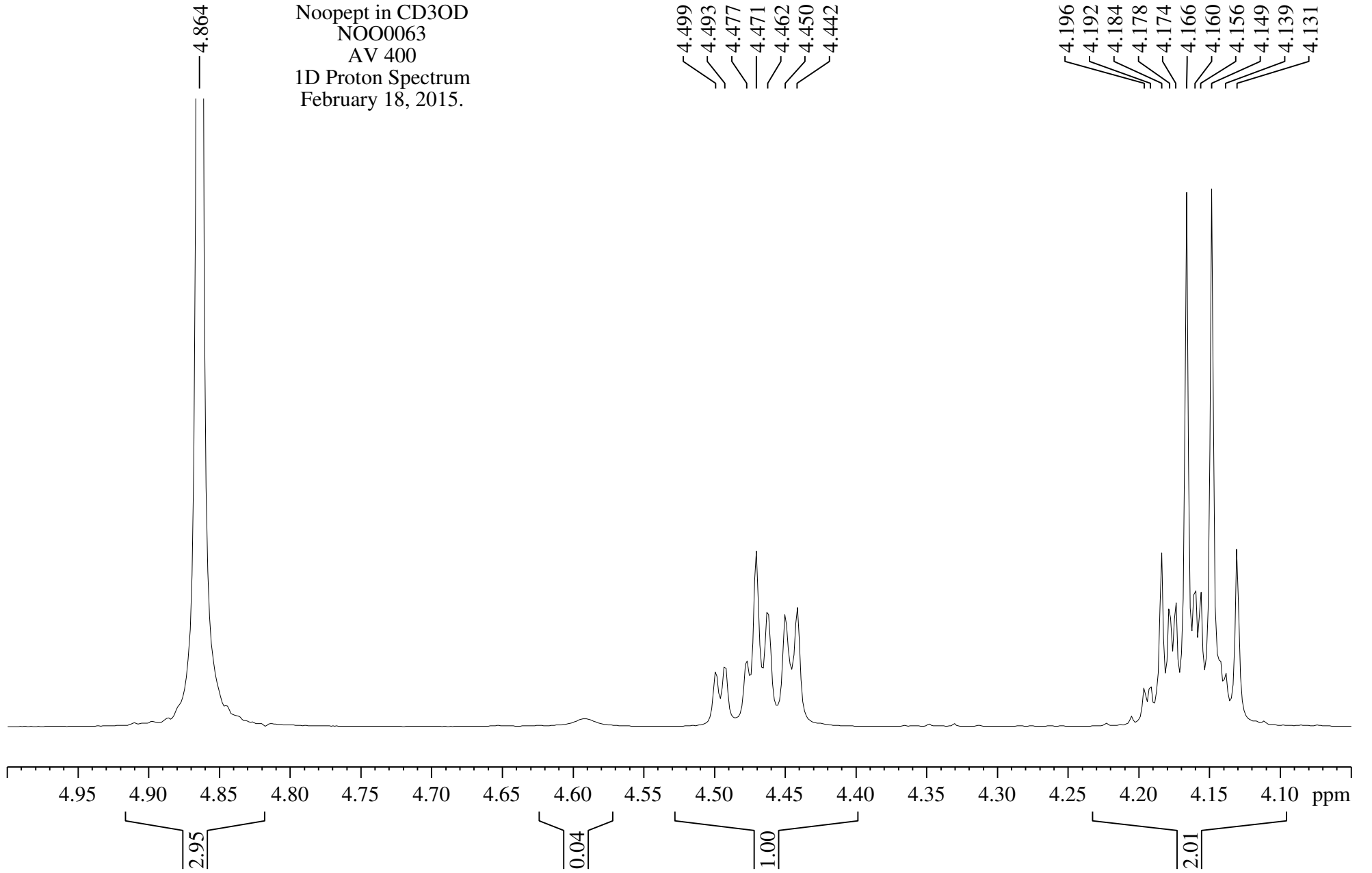
7.318
7.315
7.311
7.308
7.296
7.294
7.289
7.286
7.279
7.271
7.268
7.248
7.239
7.234
7.229
7.217
7.200



Noopept in CD3OD
NOO0063
AV 400
1D Proton Spectrum
February 18, 2015.

4.499
4.493
4.477
4.471
4.462
4.450
4.442

4.196
4.192
4.184
4.178
4.174
4.166
4.160
4.156
4.149
4.139
4.131



— 3.987

— 3.943

— 3.911

— 3.900

— 3.870

— 3.827

— 3.788

— 3.749

— 3.742

— 3.731

— 3.719

— 3.710

— 3.704

— 3.694

— 3.688

— 3.679

— 3.675

— 3.670

— 3.660

— 3.650

— 3.642

— 3.591

— 3.573

— 3.566

— 3.555

— 3.548

— 3.531

— 3.517

— 3.308

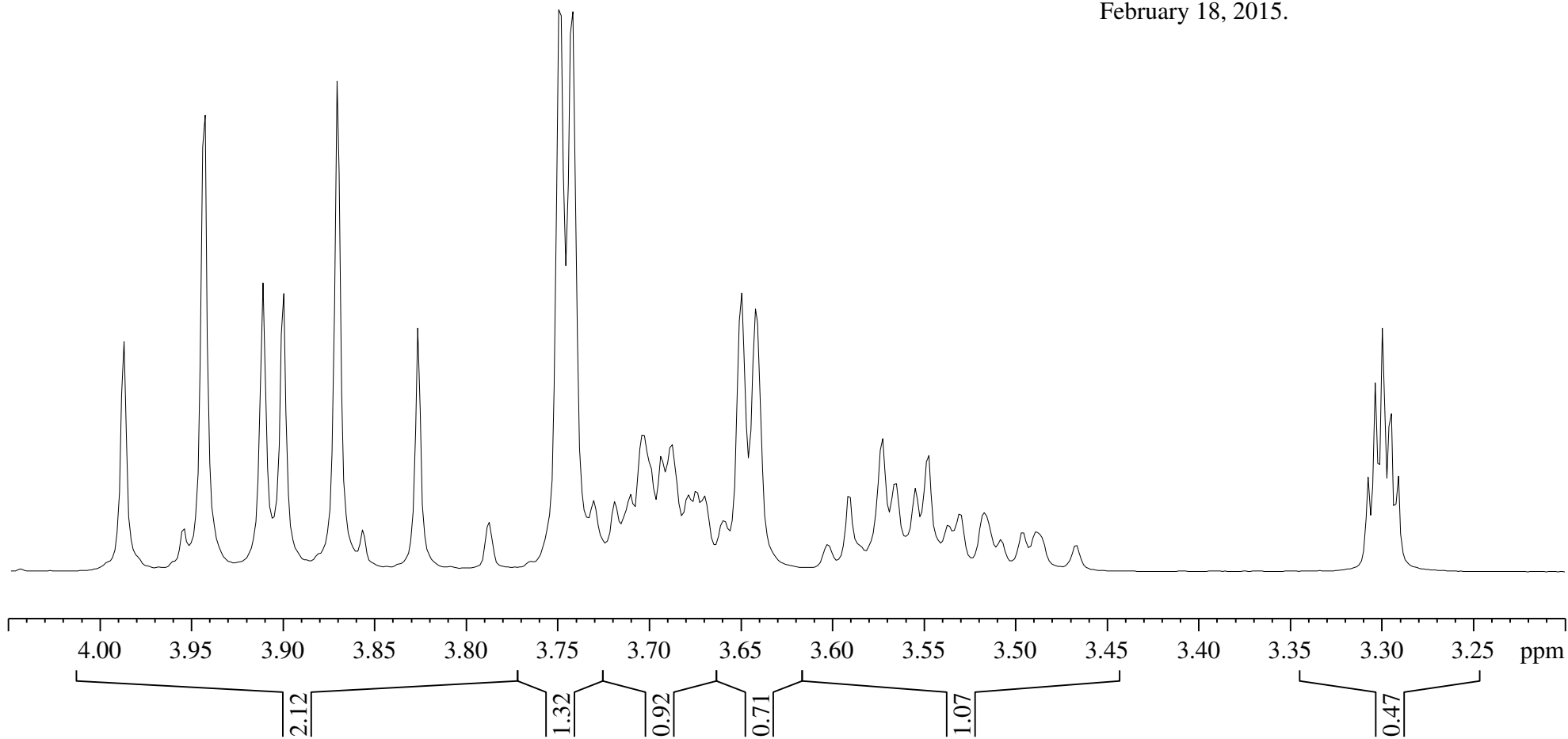
— 3.304

— 3.300

— 3.295

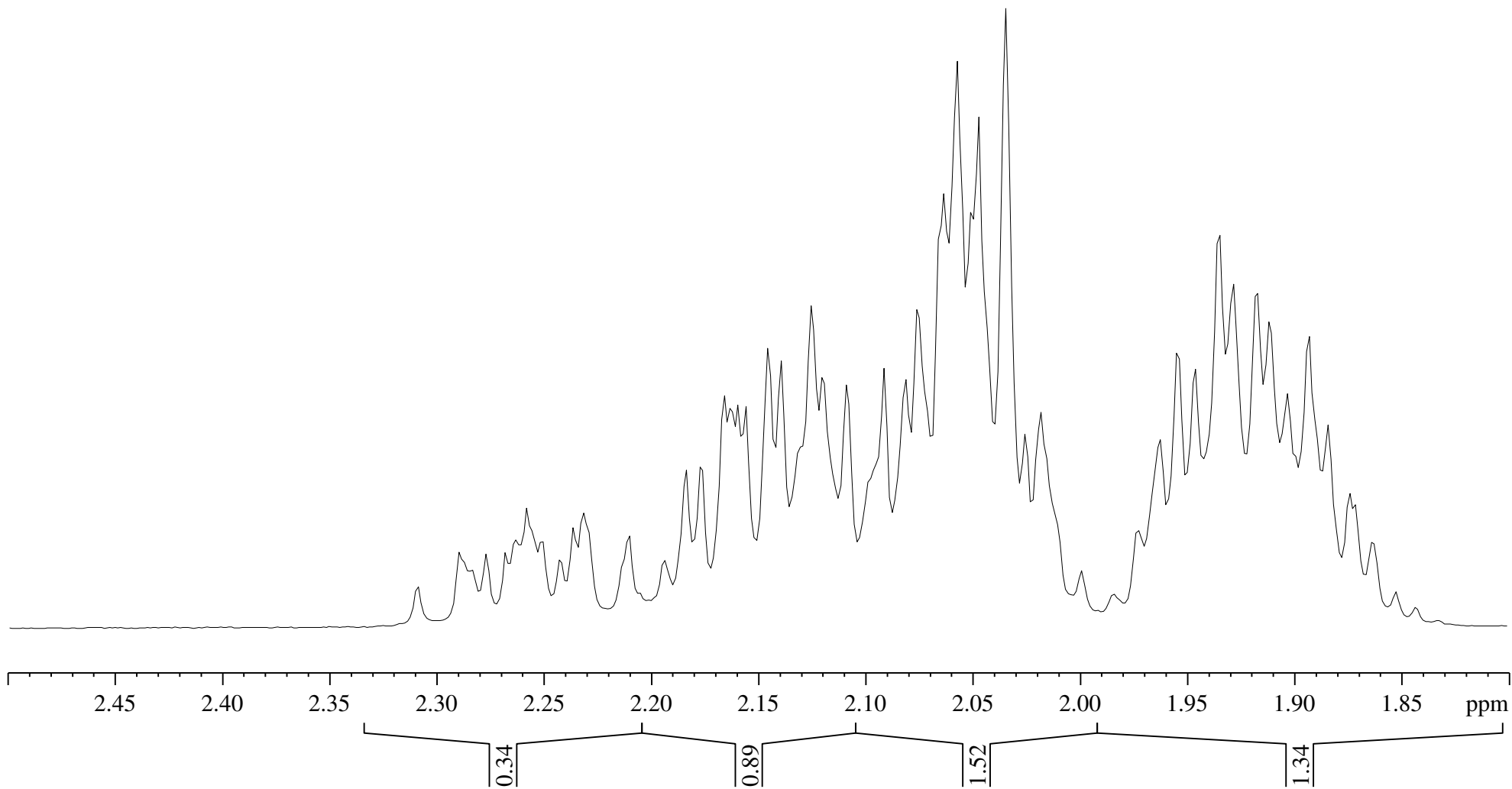
— 3.291

Noopept in CD3OD
NOO0063
AV 400
1D Proton Spectrum
February 18, 2015.



Noopept in CD3OD
NOO0063
AV 400
1D Proton Spectrum
February 18, 2015.

2.289
2.263
2.258
2.251
2.236
2.232
2.211
2.184
2.177
2.166
2.163
2.160
2.156
2.146
2.140
2.125
2.120
2.109
2.092
2.082
2.076
2.064
2.058
2.051
2.048
2.035
2.026
2.019
1.973
1.963
1.955
1.947
1.935
1.929
1.918
1.912
1.904
1.894
1.885
1.874
1.872



Noopept in CD3OD
NOO0063
AV 400
1D Proton Spectrum
February 18, 2015.

— 1.265
— 1.247
— 1.242
— 1.229

