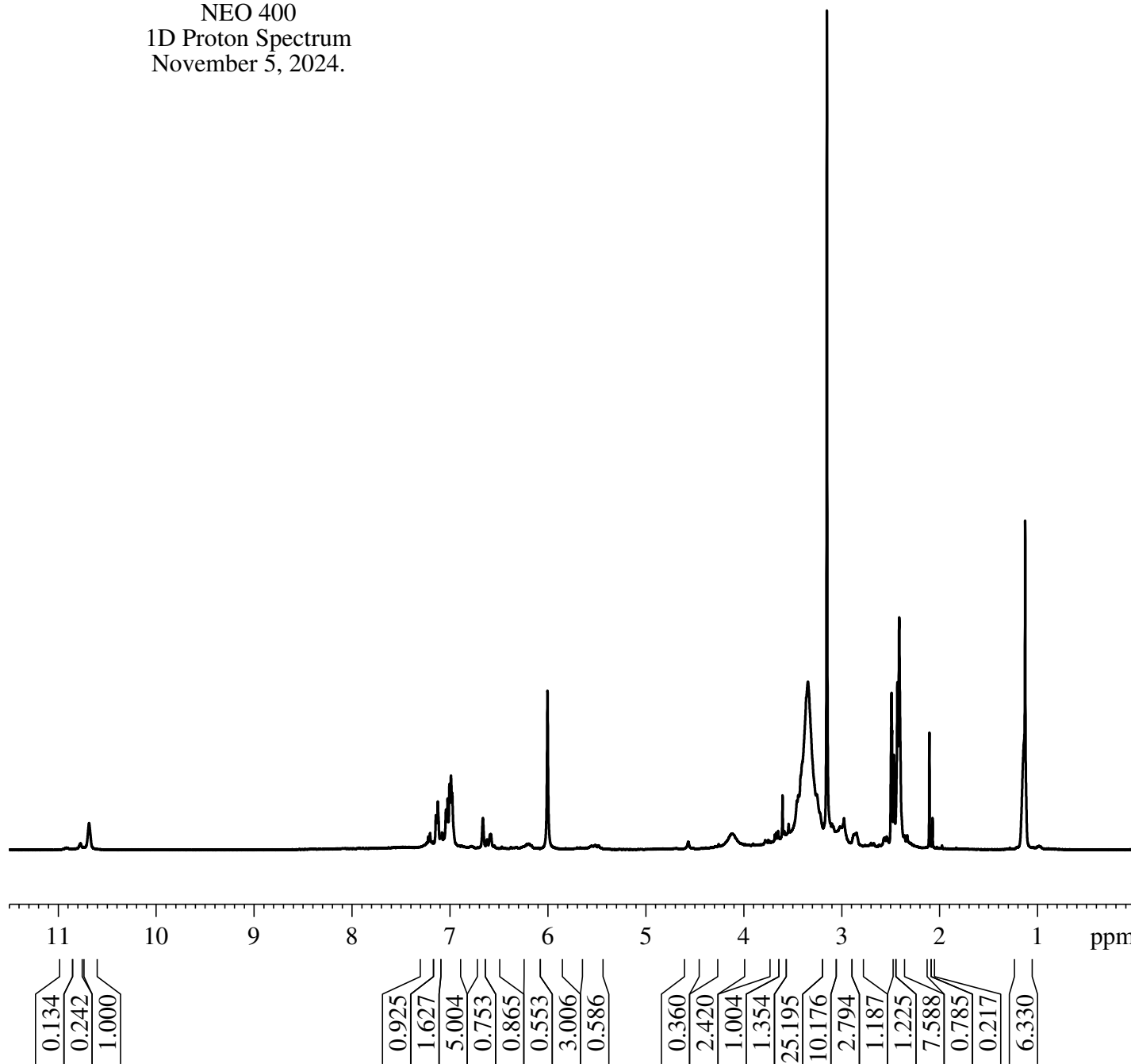


MiPLA Maleate in DMSO-d6
NEO 400
1D Proton Spectrum
November 5, 2024.

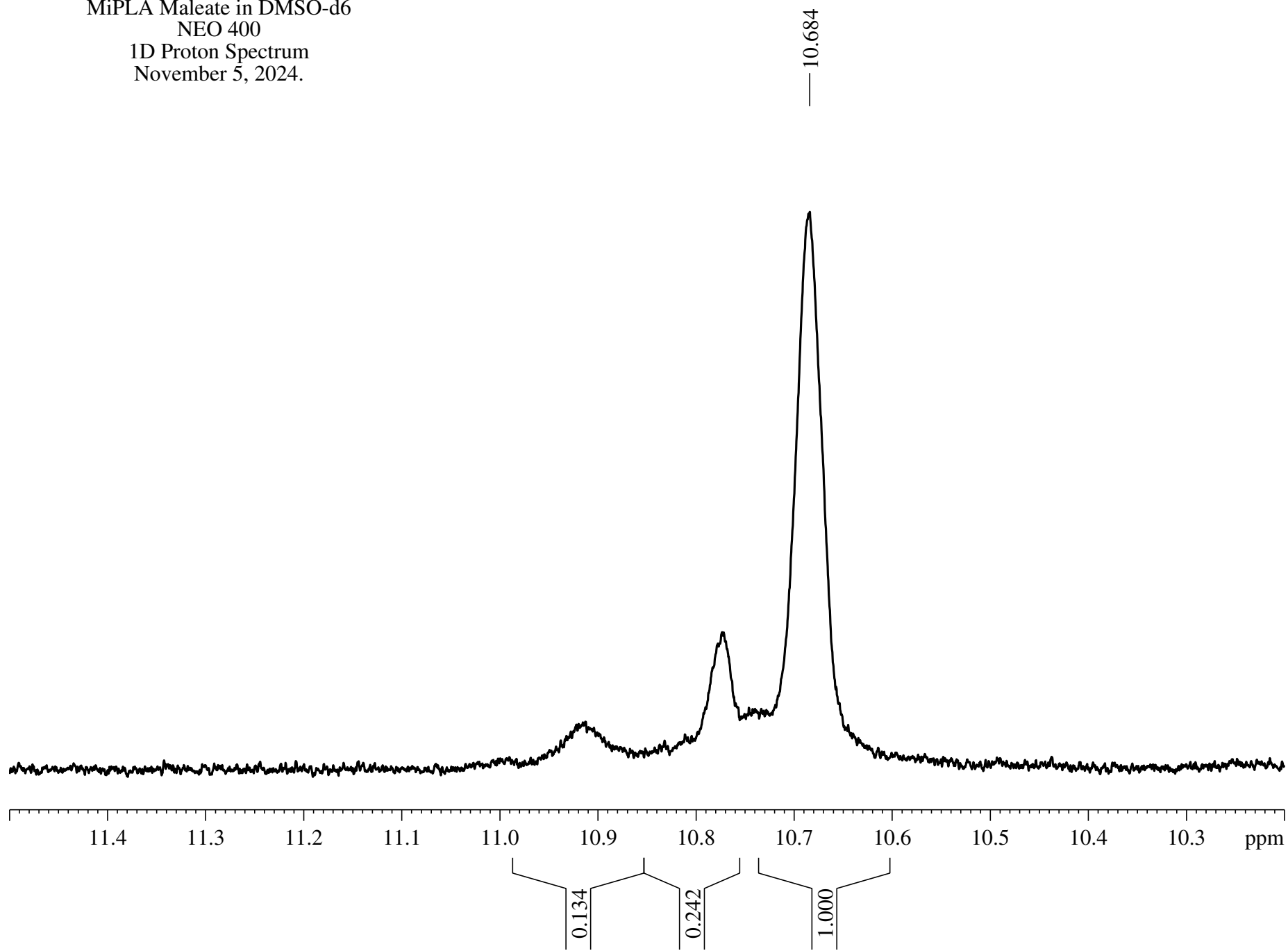
Current Data Parameters
NAME Syntharise110524
EXPNO 400
PROCNO 1

F2 - Acquisition Parameters
Date_ 20241105
Time 8.37 h
INSTRUM Avance Neo 400
PROBHD Z163739_0039 (zg30)
PULPROG zg30
TD 65536
SOLVENT DMSO
NS 16
DS 0
SWH 8196.722 Hz
FIDRES 0.250144 Hz
AQ 3.9976959 sec
RG 101
DW 61.000 usec
DE 13.54 usec
TE 296.3 K
D1 0.10000000 sec
TD0 1
SFO1 400.3424721 MHz
NUC1 1H
P0 3.33 usec
P1 10.00 usec
PLW1 14.20300007 W

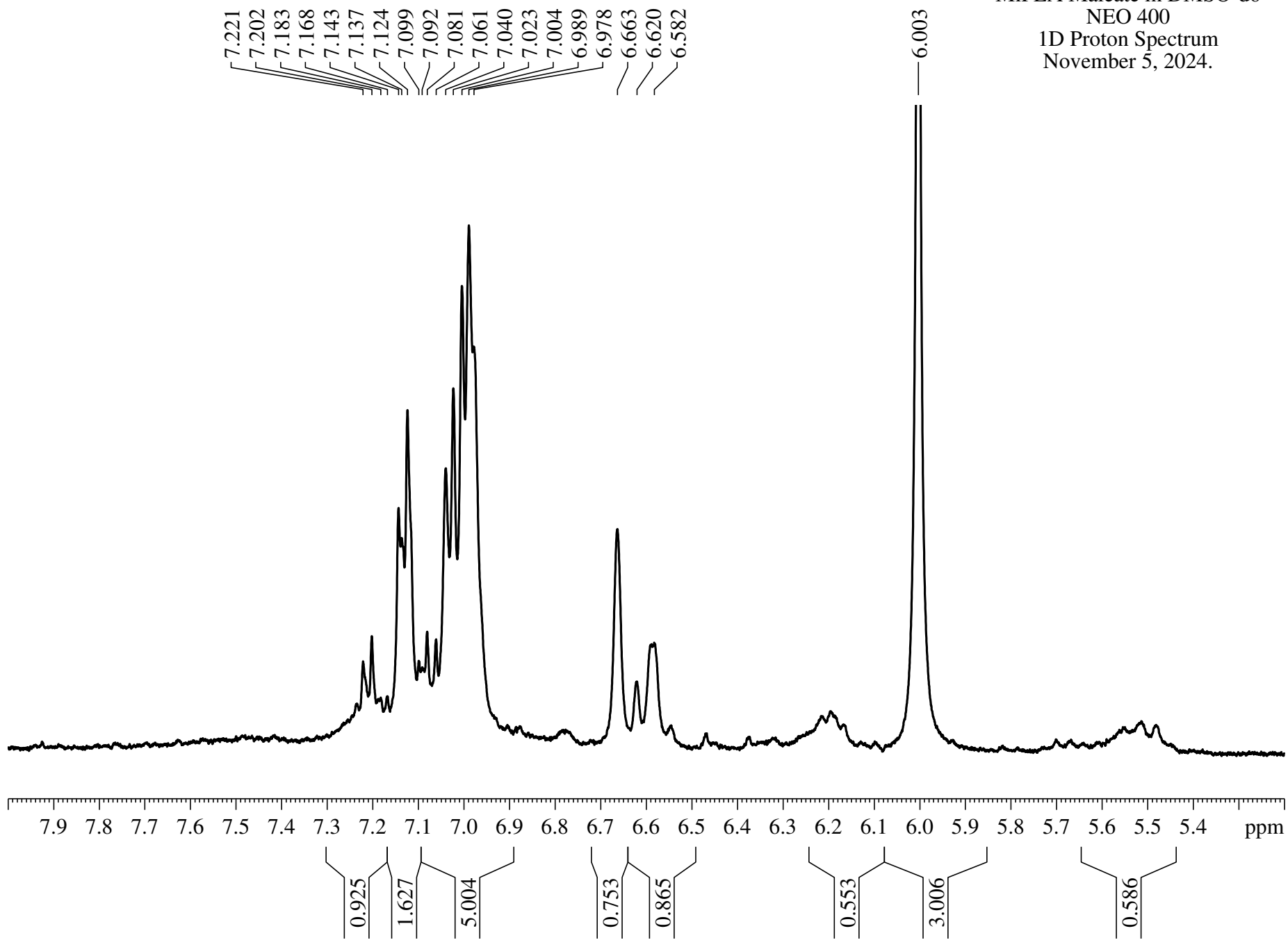
F2 - Processing parameters
SI 65536
SF 400.3400070 MHz
WDW EM
SSB 0
LB 0.30 Hz
GB 0
PC 1.00



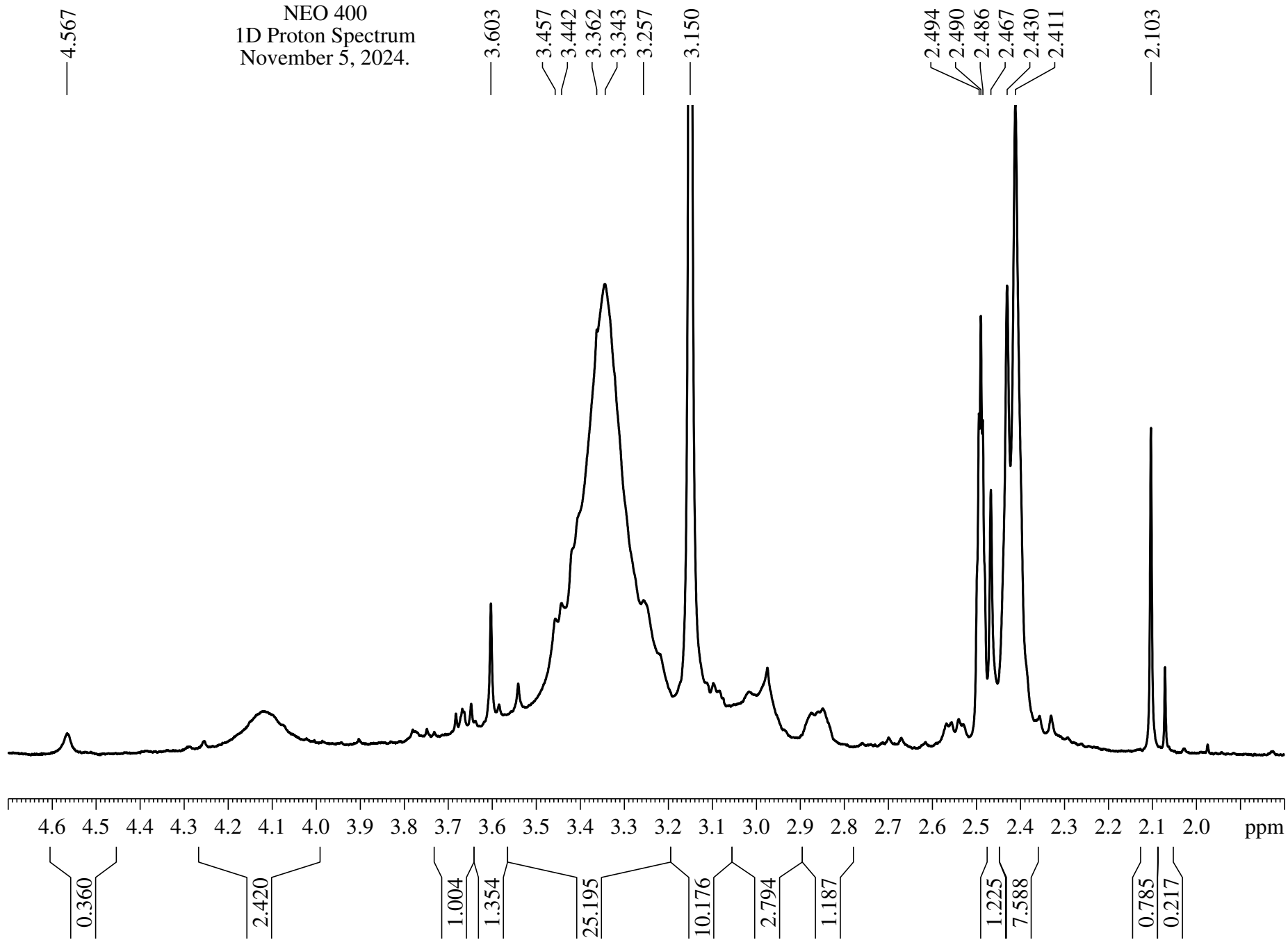
MiPLA Maleate in DMSO-d6
NEO 400
1D Proton Spectrum
November 5, 2024.



MiPLA Maleate in DMSO-d6
NEO 400
1D Proton Spectrum
November 5, 2024.



MiPLA Maleate in DMSO-d6
NEO 400
1D Proton Spectrum
November 5, 2024.



MiPLA Maleate in DMSO-d6
NEO 400
1D Proton Spectrum
November 5, 2024.

