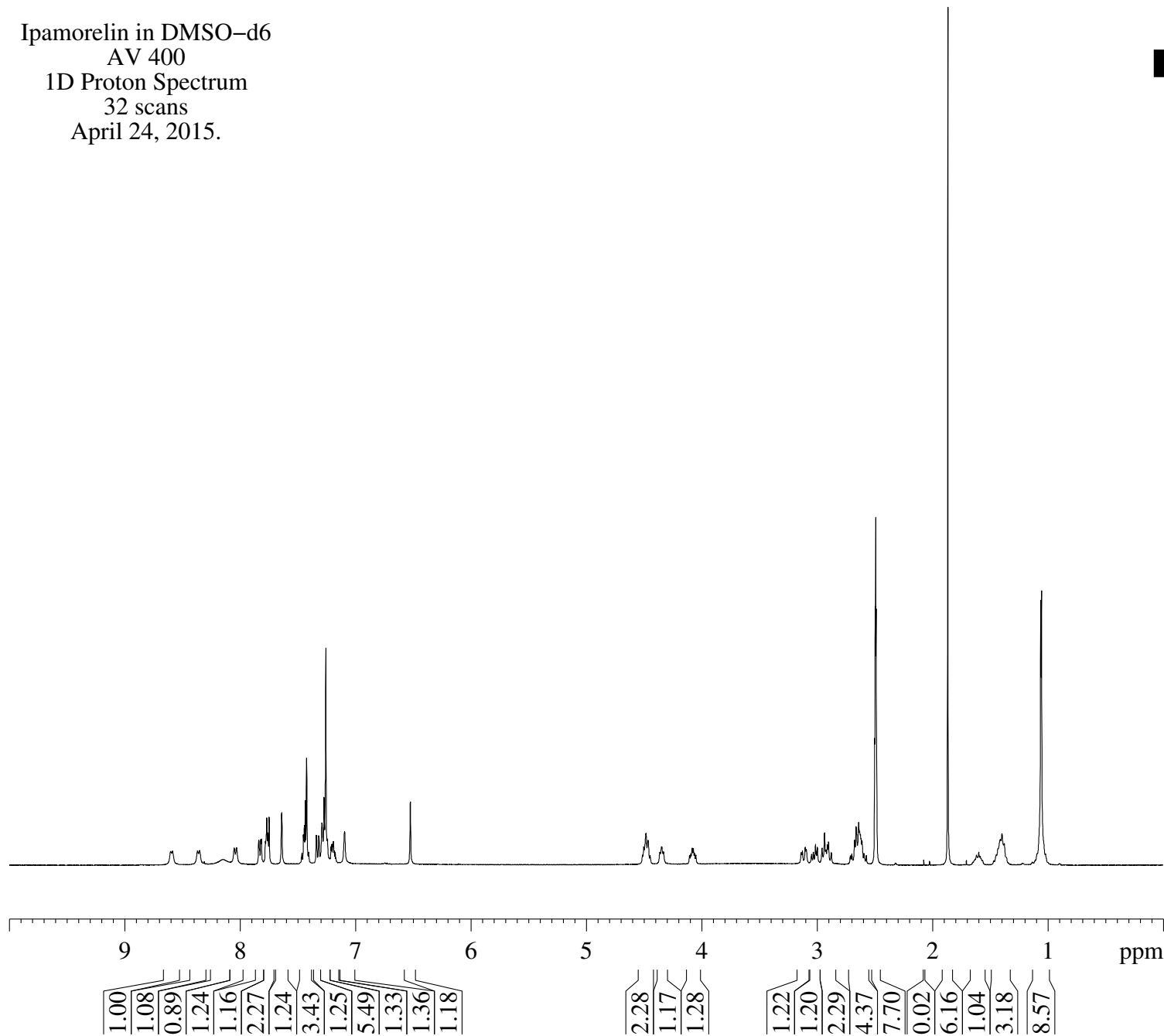


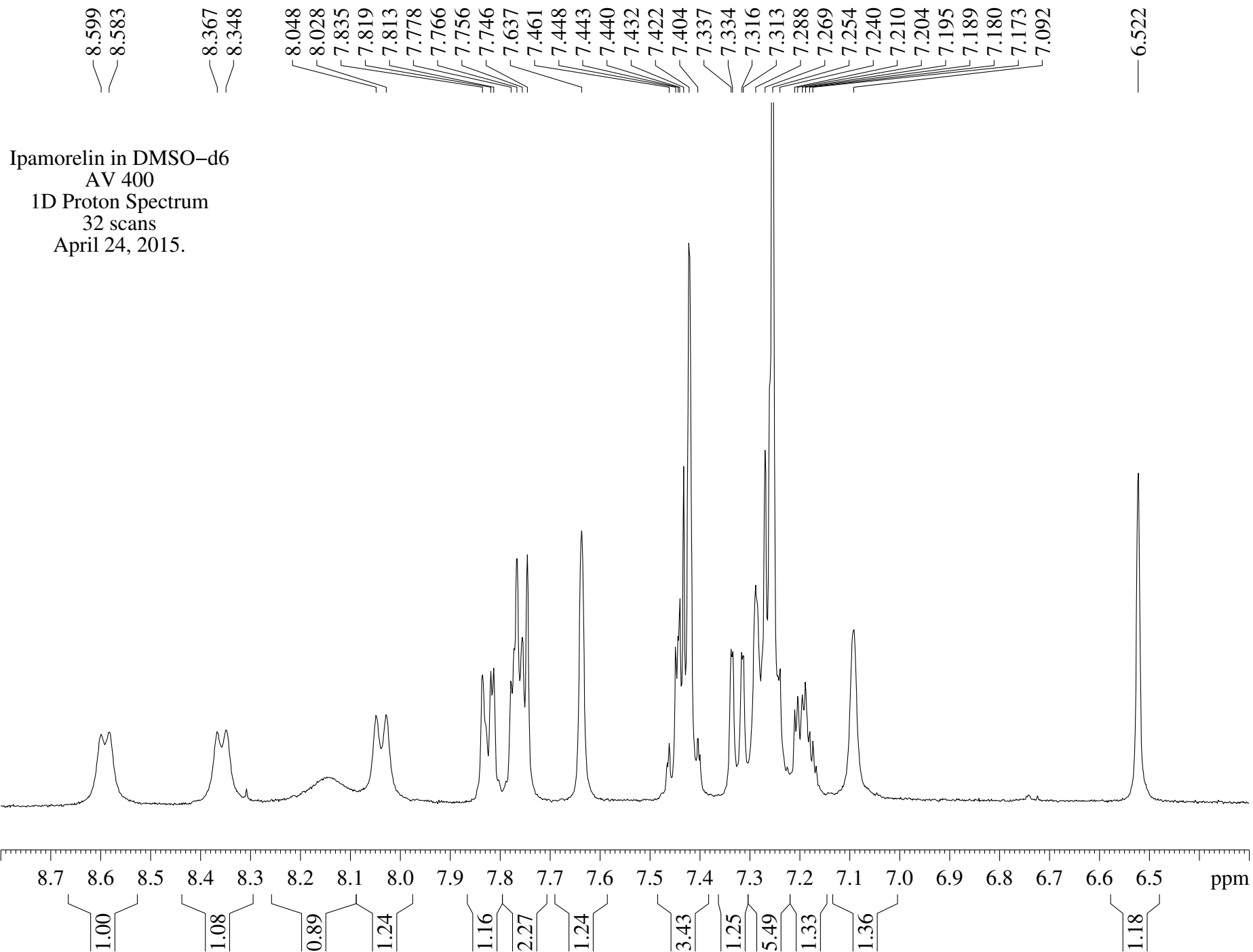
Ipamorelin in DMSO-d6
AV 400
1D Proton Spectrum
32 scans
April 24, 2015.



NAME Syn042415
EXPNO 31
PROCNO 1
Date_ 20150424
Time 9.01
INSTRUM av400
PROBHD 5 mm PABBO BB-
PULPROG zg30
TD 32768
SOLVENT DMSO
NS 32
DS 0
SWH 8278.146 Hz
FIDRES 0.252629 Hz
AQ 1.9792372 sec
RG 574.7
DW 60.400 usec
DE 6.00 usec
TE 295.3 K
D1 2.50000000 sec
TD0 1

===== CHANNEL f1 =====
NUC1 1H
P1 9.80 usec
PL1 0.00 dB
PL1W 9.04279137 W
SFO1 400.1324710 MHz
SI 16384
SF 400.1300066 MHz
WDW EM
SSB 0
LB 0.30 Hz
GB 0
PC 1.00



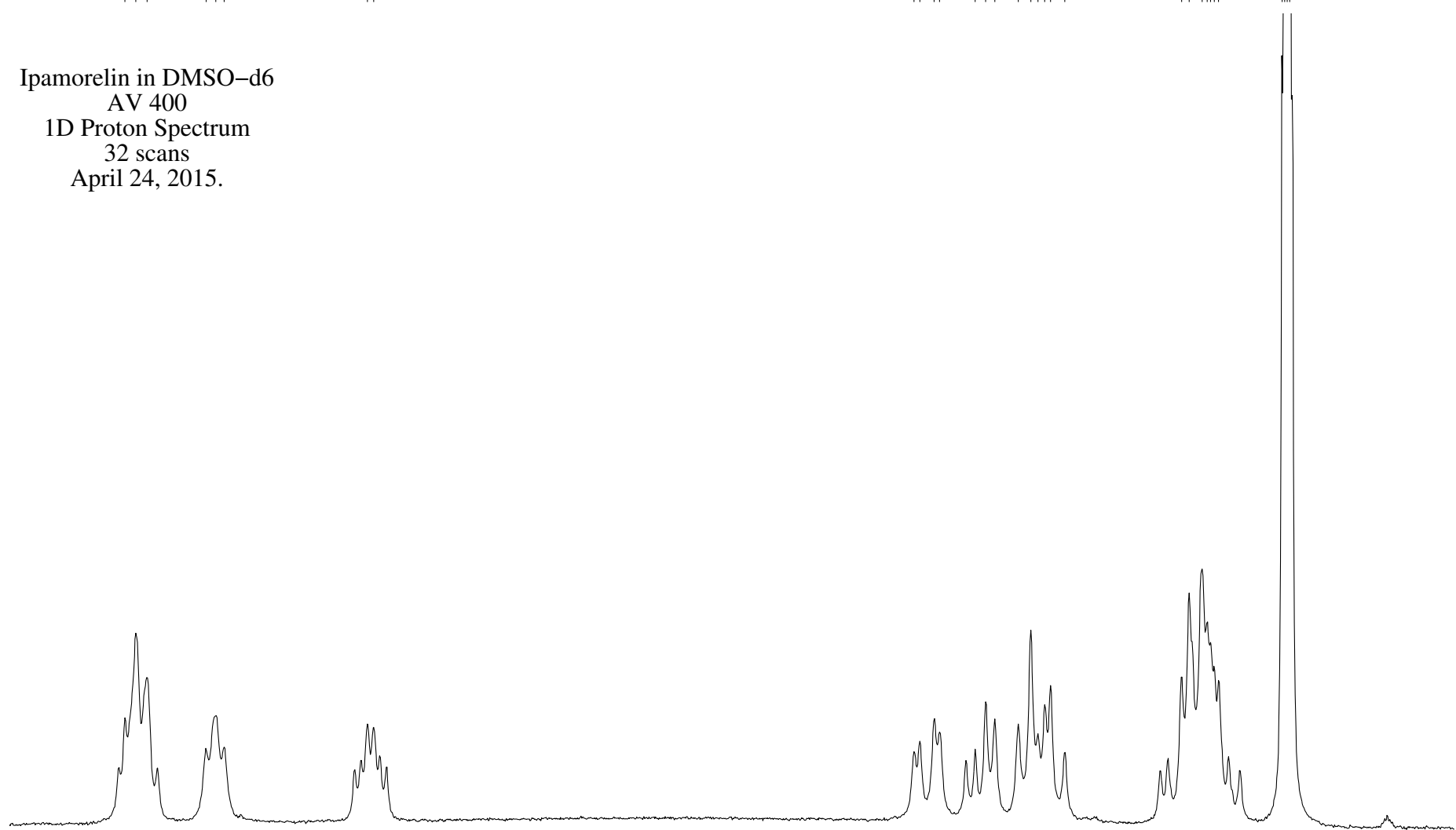


4.500
4.481
4.462
4.360
4.343
4.329

4.080
4.070

3.135
3.125
3.100
3.091
3.029
3.011
2.995
2.955
2.933
2.921
2.909
2.899
2.874
2.672
2.659
2.637
2.628
2.623
2.616
2.608
2.498
2.494
2.490
2.485

Ipamorelin in DMSO-d6
AV 400
1D Proton Spectrum
32 scans
April 24, 2015.



4.6 4.5 4.4 4.3 4.2 4.1 4.0 3.9 3.8 3.7 3.6 3.5 3.4 3.3 3.2 3.1 3.0 2.9 2.8 2.7 2.6 2.5 2.4 ppm

2.28
1.17

1.28

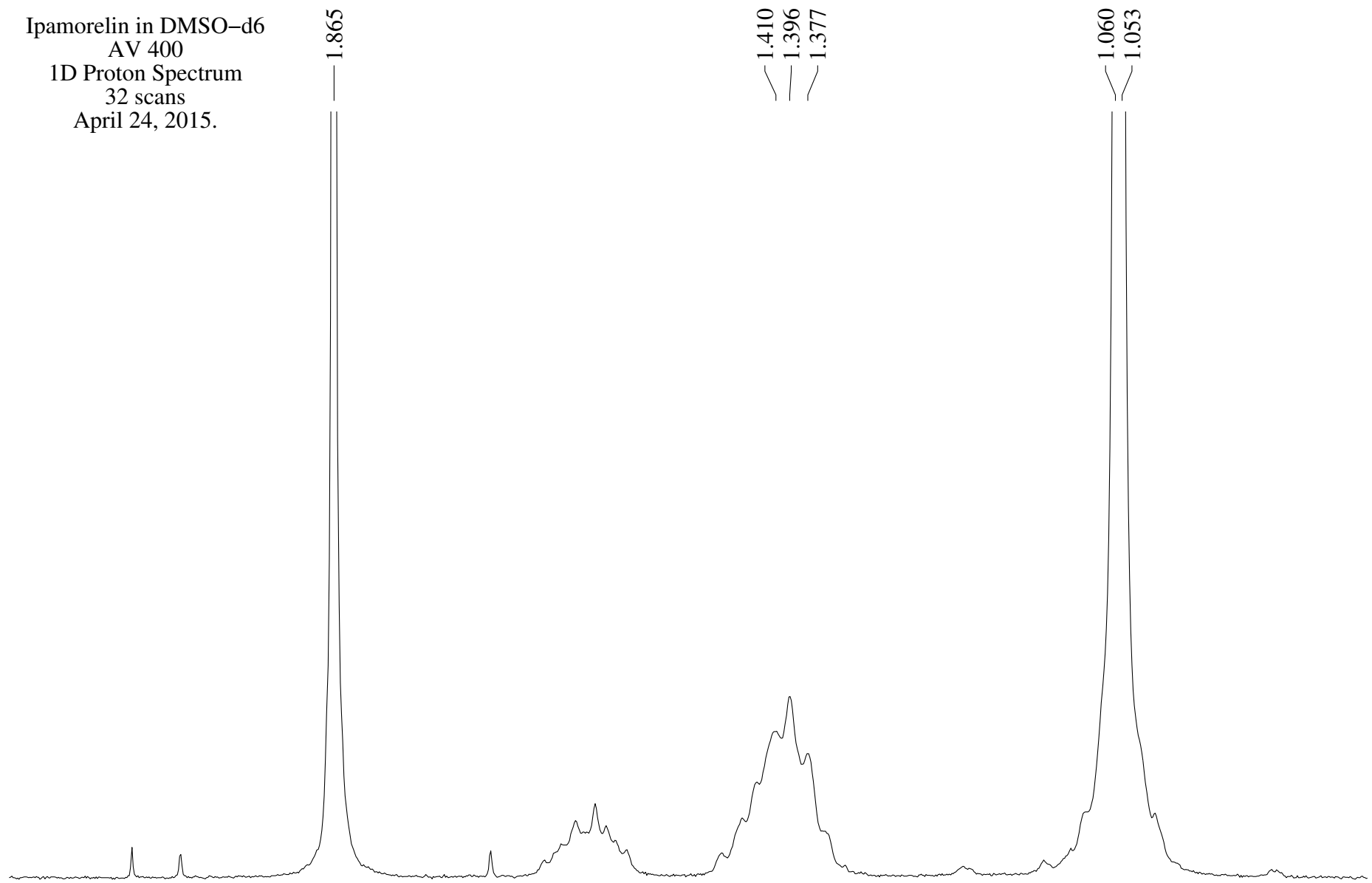
1.22
1.20
2.29

4.37
7.70

Ipamorelin in DMSO-d6
AV 400
1D Proton Spectrum
32 scans
April 24, 2015.

1.410
1.396
1.377

1.060
1.053



0.02

6.16

1.04

3.18

8.57

2.1 2.0 1.9 1.8 1.7 1.6 1.5 1.4 1.3 1.2 1.1 1.0 0.9 ppm