

Clomethiazole HCl in DMSO-d6  
AV 400  
1D Proton Spectrum  
16 scans  
March 18, 2015.

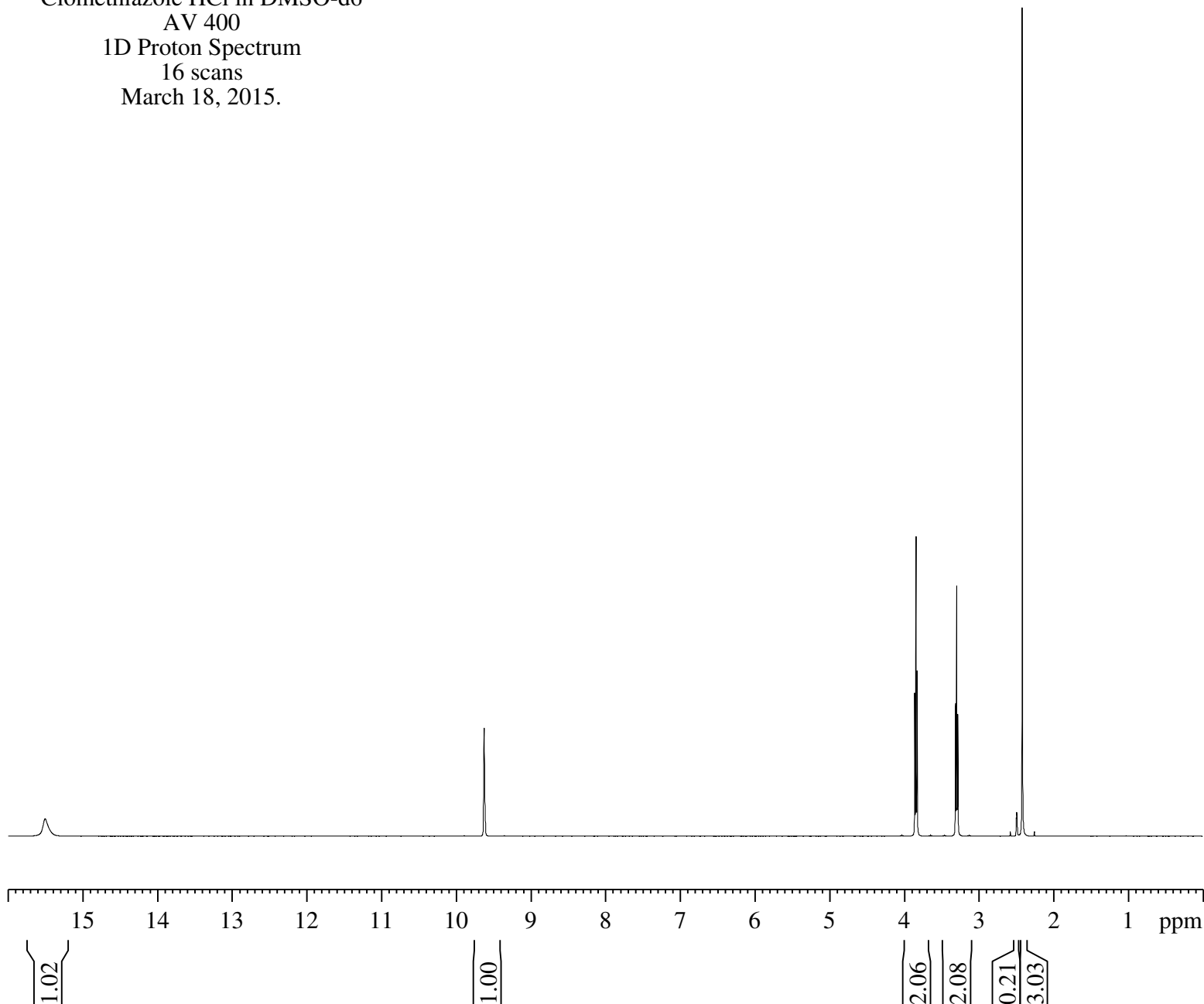


Current Data Parameters  
NAME Syn031815  
EXPNO 41  
PROCNO 1

F2 - Acquisition Parameters  
Date\_ 20150318  
Time 13.22  
INSTRUM av400  
PROBHD 5 mm PABBO BB-  
PULPROG zg30  
TD 32768  
SOLVENT DMSO  
NS 16  
DS 0  
SWH 8278.146 Hz  
FIDRES 0.252629 Hz  
AQ 1.9791873 sec  
RG 181  
DW 60.400 usec  
DE 6.00 usec  
TE 303.5 K  
D1 2.50000000 sec  
TD0 1

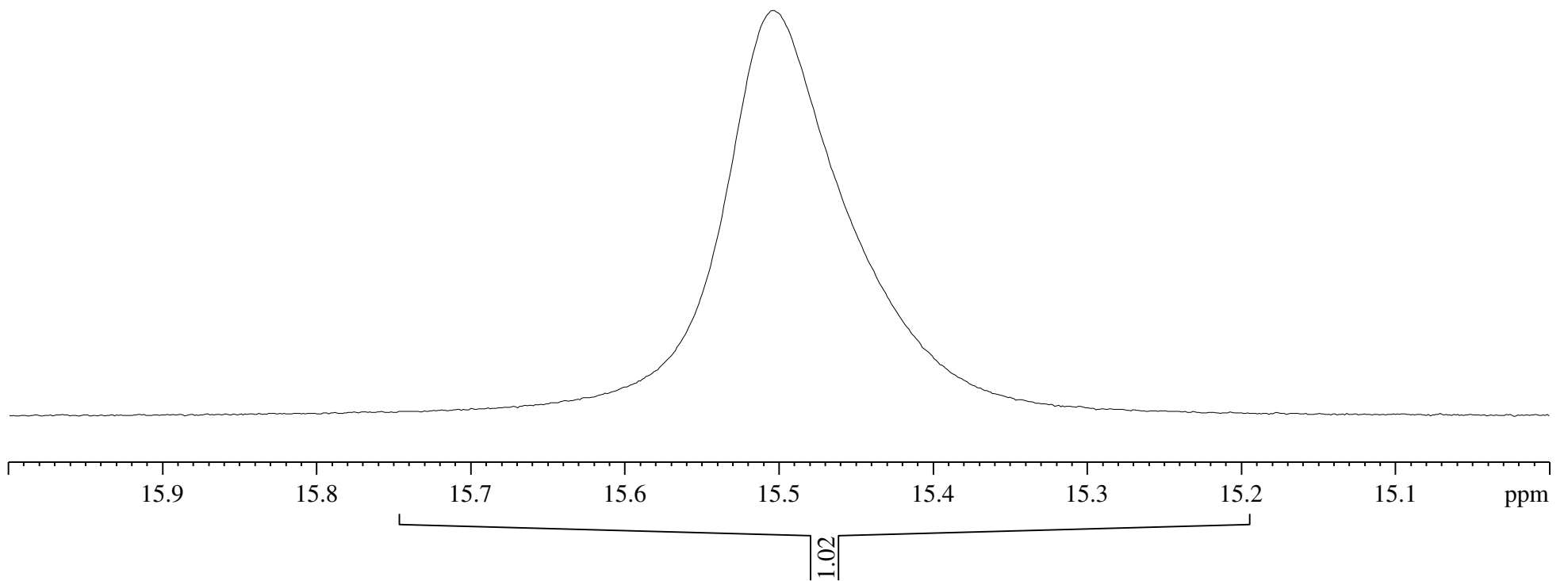
===== CHANNEL f1 =====  
NUC1 1H  
P1 9.80 usec  
PL1 0 dB  
PL1W 9.04279137 W  
SFO1 400.1324710 MHz

F2 - Processing parameters  
SI 16384  
SF 400.1300064 MHz  
WDW EM  
SSB 0  
LB 0.30 Hz  
GB 0  
PC 1.00

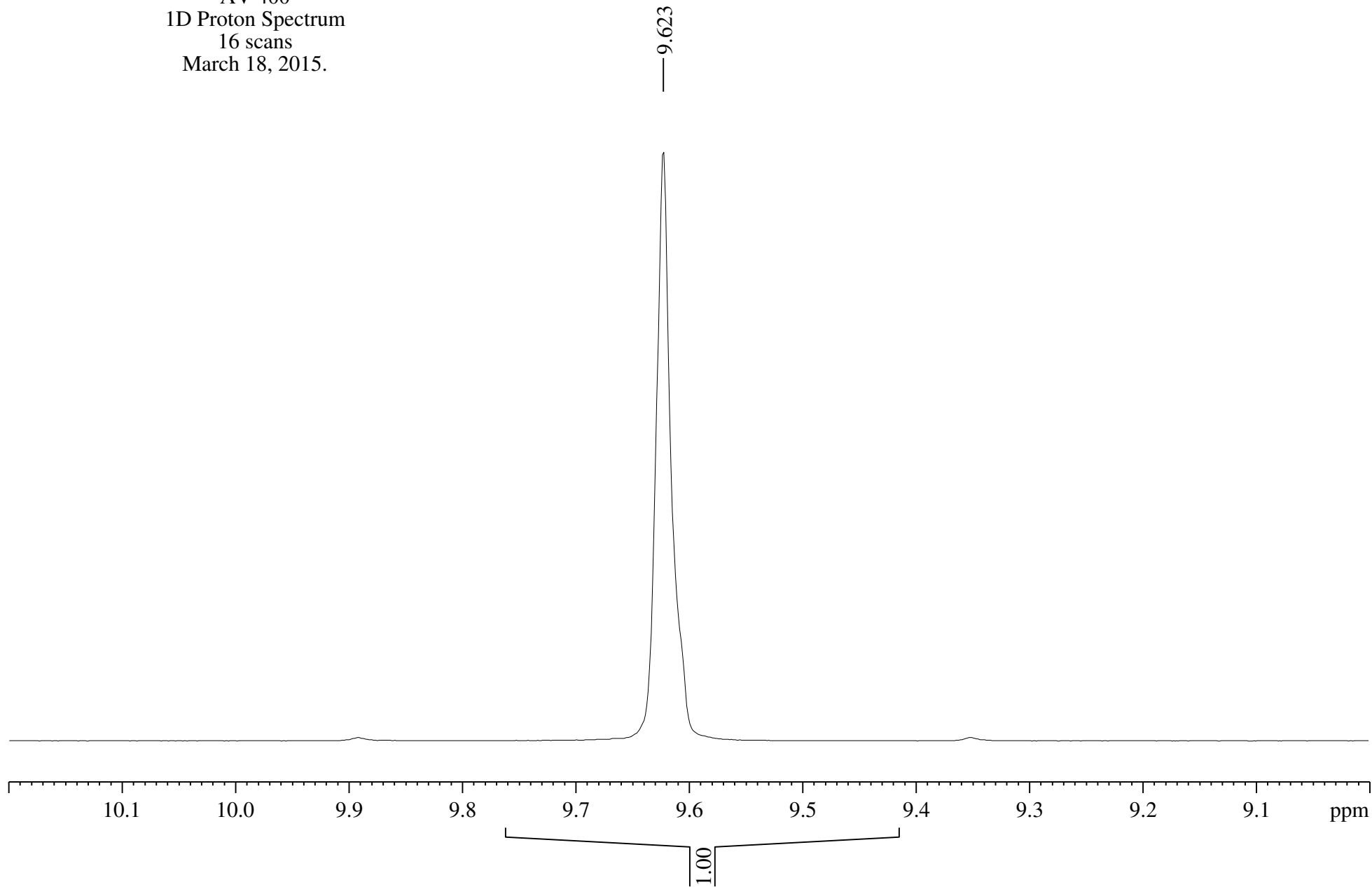


Clomethiazole HCl in DMSO-d6  
AV 400  
1D Proton Spectrum  
16 scans  
March 18, 2015.

— 15.504



Clomethiazole HCl in DMSO-d6  
AV 400  
1D Proton Spectrum  
16 scans  
March 18, 2015.



Clomethiazole HCl in DMSO-d6  
AV 400  
1D Proton Spectrum  
16 scans  
March 18, 2015.

3.856  
3.840  
3.824

3.310  
3.295  
3.278

2.494  
2.490  
2.486

